



LEIGHTON GARDENS, KENSAL RISE, LONDON, NW10  
**£2,250 PER MONTH FURNISHED**

**A DELIGHTFUL TWO DOUBLE BEDROOM, GROUND FLOOR APARTMENT LOCATED MOMENTS FROM KENSAL RISE & KENSAL GREEN STATIONS.**

Kensal Rise & Queens Park | 0208 960 4947 | [kensalrise@winkworth.co.uk](mailto:kensalrise@winkworth.co.uk)

**Winkworth**

for every step...

[winkworth.co.uk](http://winkworth.co.uk)





## DESCRIPTION:

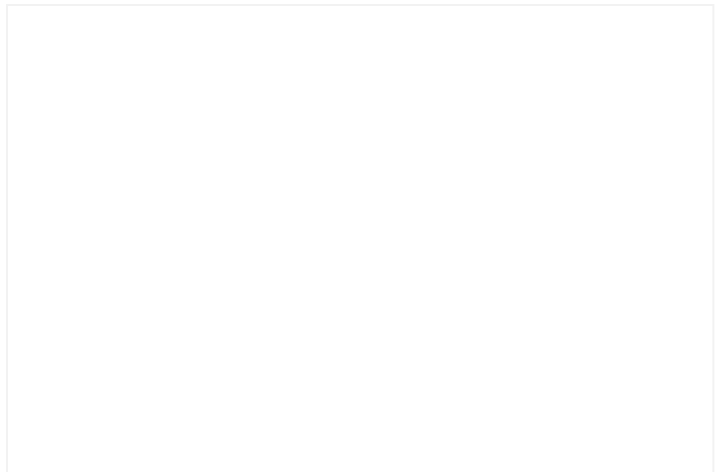
This lovely garden flat is in a great location just off the Chamberlayne Road in Kensal Rise.

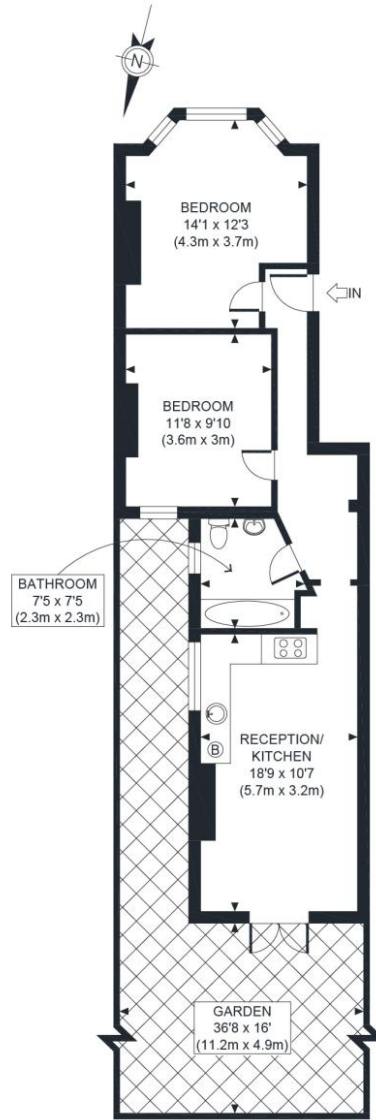
This property comprises of two good sized double bedrooms. The south facing front bay bedroom is offered with two built in wardrobes as well as cafe window shutters, the second bedroom is slightly larger and has views to the garden. There is a family bathroom and there is open plan living to the rear of the property incorporating the kitchen and reception room. Threw French doors, the property also benefits from a shared garden slit with both patio and lawn.

Offered furnished, available 26th April and is Professionally Managed.

Brent Council Tax Band - D







GROUND FLOOR  
GROSS INTERNAL  
FLOOR AREA 610 SQ FT

APPROX. GROSS INTERNAL FLOOR AREA 610 SQ FT / 57 SQM

Ref: WWKR

Copyright **photoplan**

Disclaimer: Floor plan measurements are approximate and are for illustrative purposes only. While we do not doubt the floor plan accuracy and completeness, you or your advisors should conduct a careful, independent investigation of the property in respect of monetary valuation

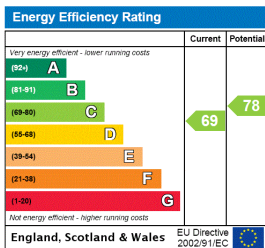
This floorplan is for illustration purposes only and is not to scale. The position and size of doors, windows, appliances and other features are approximate.

**Deposit:** 5 weeks rent

**Holding Deposit:** 1 weeks rent

**Council Tax Band:** D

Where no figures are shown, we have been unable to ascertain the information. All figures that are shown were correct at the time of printing.



Kensal Rise & Queens Park | 0208 960 4947 | kensalrise@winkworth.co.uk

**Winkworth**

for every step...

winkworth.co.uk

Winkworth wishes to inform prospective buyers and tenants that these particulars are a guide and act as information only. All our details are given in good faith and believed to be correct at the time of printing but they don't form part of an offer or contract. No Winkworth employee has authority to make or give any representation or warranty in relation to this property. All fixtures and fittings, whether fitted or not are deemed removable by the vendor unless stated otherwise and room sizes are measured between internal wall surfaces, including furnishings.