



ANERLEY HILL, SE19

**£1,850 PER MONTH UNFURNISHED**

## BRAND NEW ONE BEDROOM GARDEN FLAT TO RENT

Crystal Palace | 02038693222 | [crystalpalace@winkworth.co.uk](mailto:crystalpalace@winkworth.co.uk)

**Winkworth**

for every step...

[winkworth.co.uk](https://www.winkworth.co.uk)



#### DESCRIPTION:

Winkworth is pleased to offer this modern one bedroom garden flat for rent on Anerley Hill.

The flat forms part of a brand-new development of 12 flats centrally located for Crystal Palace Triangle, Station & Park.

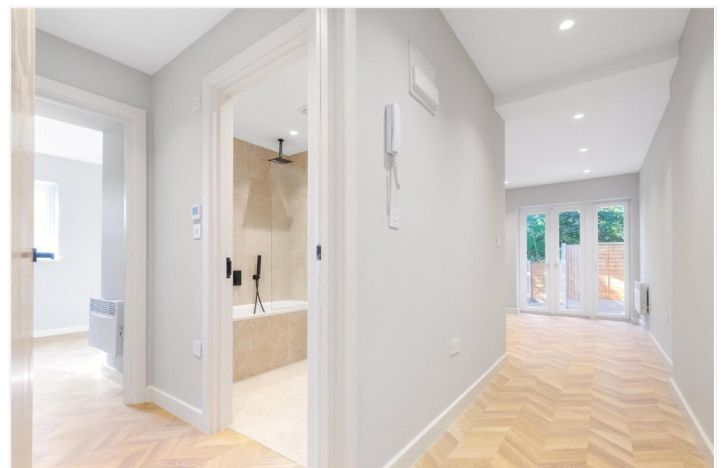
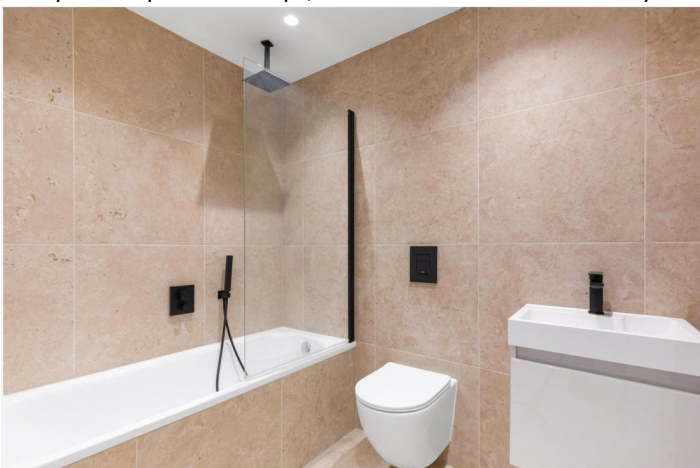
The flat has been finished to a contemporary standard throughout and comprises entrance hallway, spacious open plan kitchen and reception room with space to dine and two sets of bi-folds doors out onto the private garden, bathroom and good-sized bedroom.

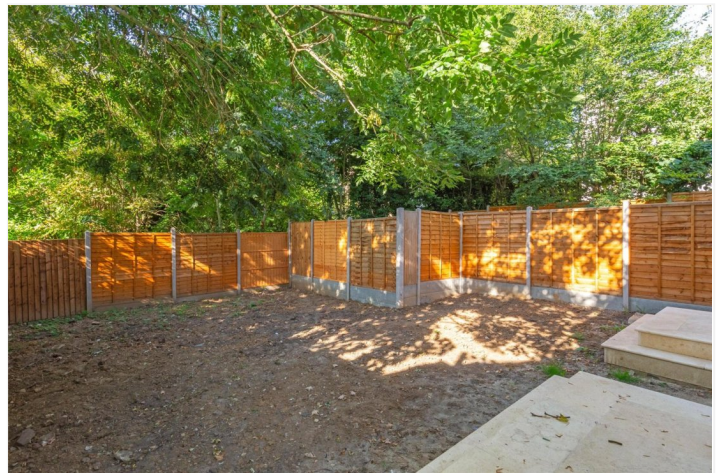
The property is offered unfurnished & available immediately.

The property is ideally located only a short walk to Crystal Palace Park & Station offering national rail links into London Bridge in 25 minutes, London Victoria in 27 minutes plus the Overground network. Crystal Palace Triangle which offers a vast array of independent shops, cafes & bars is also within easy reach.

#### AT A GLANCE

- One bedroom
- Lower ground floor
- Private garden
- Period conversion
- Brand new refurbishment
- Modern finish
- Unfurnished
- Available Now





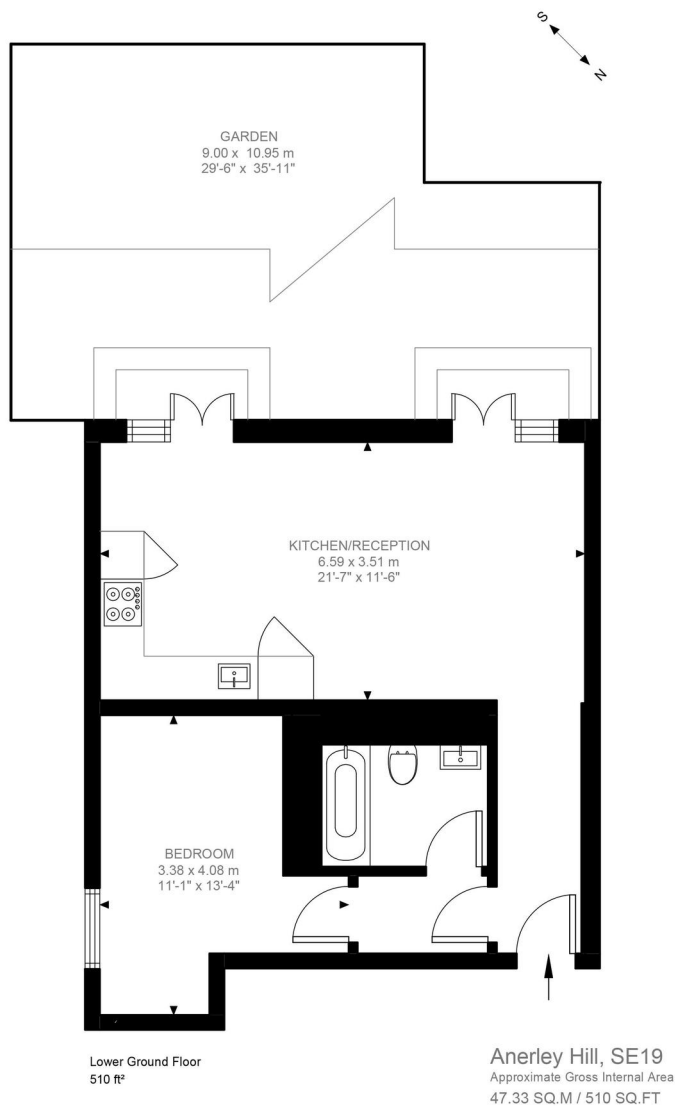


Illustration for identification purposes only. Not to scale.  
Floor Plan Drawn According To RICS Guidelines.

This floorplan is for illustration purposes only and is not to scale. The position and size of doors, windows, appliances and other features are approximate.

**Deposit:** £0.00

**Holding Deposit:**

**Council Tax Band:**

Where no figures are shown, we have been unable to ascertain the information. All figures that are shown were correct at the time of printing.

Crystal Palace | 02038693222 | crystalpalace@winkworth.co.uk

**Winkworth**

**for every step...**

**winkworth.co.uk**

Winkworth wishes to inform prospective buyers and tenants that these particulars are a guide and act as information only. All our details are given in good faith and believed to be correct at the time of printing but they don't form part of an offer or contract. No Winkworth employee has authority to make or give any representation or warranty in relation to this property. All fixtures and fittings, whether fitted or not are deemed removable by the vendor unless stated otherwise and room sizes are measured between internal wall surfaces, including furnishings.