



21 Mill Lane, Romsey, Hampshire, SO51 8EW

Winkworth



LOVELY HOME IN CENTRAL ROMSEY

21 Mill Lane is situated in a quiet and peaceful location within walking distance of the town centre. Romsey is an historic market town, providing an excellent range of leisure facilities and shops for everyday needs. Schools for all ages, both state and private, are readily available. There is easy access to the M27 and M3 motorways, serving the major centres of Southampton, Winchester and Bournemouth. In addition, there is an excellent local bus service and a train station linking with the mainline services to London at Southampton. The New Forest National Park is within 6 miles of Romsey.

The property is entered via the hallway which provides access to the downstairs living accommodation. The sitting room/dining room benefits from a large bay window making this room pleasantly light and airy. The kitchen is to the rear, where there is also a bathroom and separate WC. The first floor accommodates two generously sized double bedrooms with the third bedroom being accessed from bedroom two. The property would benefit from some modernisation and improvement.

To the rear, there is the most delightfully large garden extending to 0.10 of an acre in total, the garden backs onto fields providing a lovely outlook and is currently laid to lawn, however, offers great potential to the keen gardener.

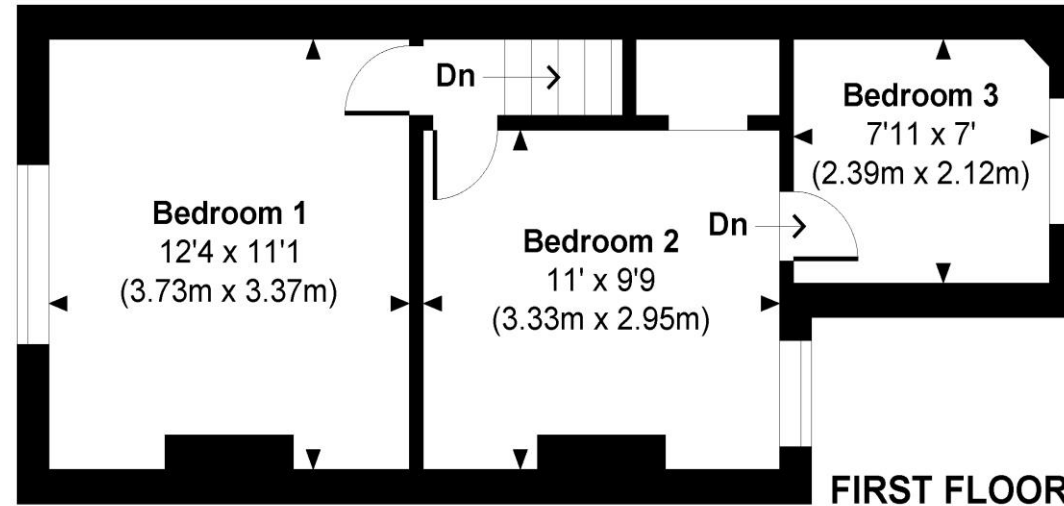




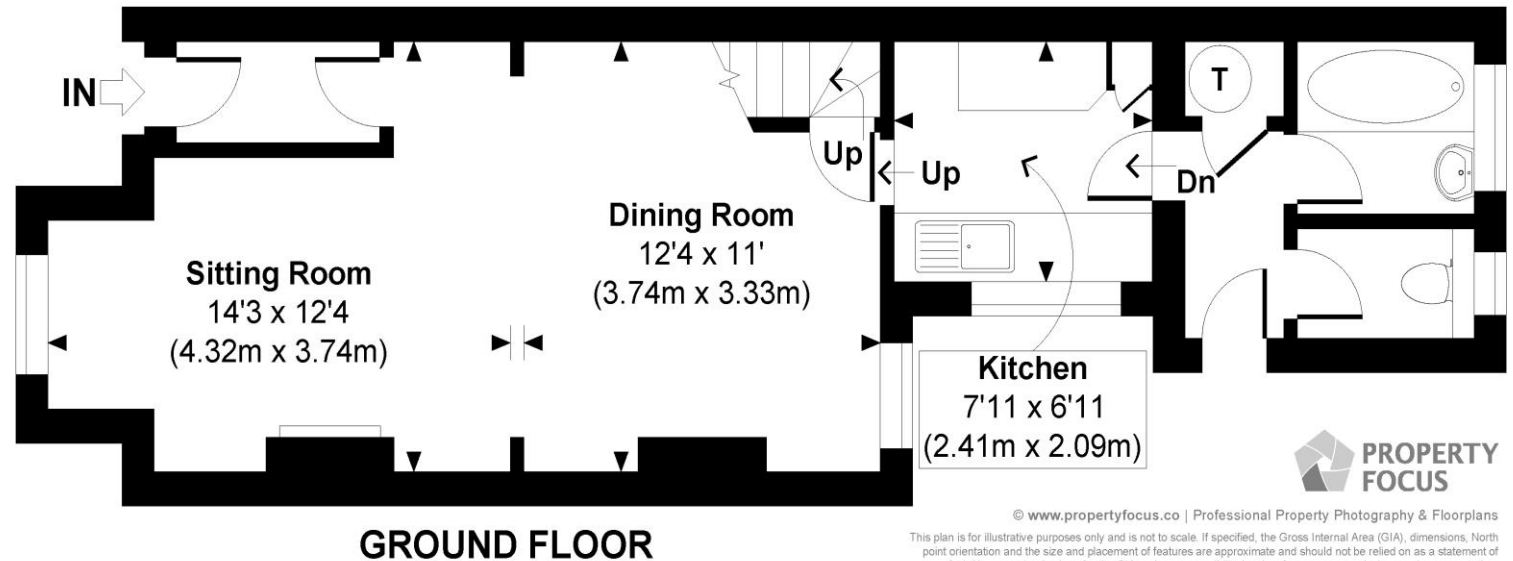
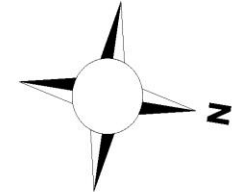
Winkworth

Address: 21 Mill Lane, Romsey, Hampshire, SO51 8EW

Council Tax Band: "C"



Mill Lane
Approximate Gross Internal Area
Total = 760 Sq Ft / 70.62 Sq M



© www.propertyfocus.co.uk | Professional Property Photography & Floorplans

This plan is for illustrative purposes only and is not to scale. If specified, the Gross Internal Area (GIA), dimensions, North point orientation and the size and placement of features are approximate and should not be relied on as a statement of fact. No guarantee is given for the GIA and no responsibility is taken for any error, omission or misrepresentation.

winkworth.co.uk/romsey

Winkworth Romsey

18 Market Place, Romsey, Hampshire, SO51 8NA
01794 511911 | romsey@winkworth.co.uk

winkworth.co.uk/romsey

Winkworth Winchester

2 Black Swan Buildings, Southgate Street,
Winchester, Hampshire, SO23 9DT
01962 866777 | winchester@winkworth.co.uk

Winkworth Mayfair & Country House Department

11 Berkeley Street, Mayfair, London, W1J 8DS
020 7871 0589 | countryhouse@winkworth.co.uk

Winkworth

See things differently