



556 King's Road
Fulham, London, SW6 2DZ

Freehold Retail Showroom.

1,050 sq ft
(97.55 sq m)

- Striking period façade.
- Prominent King's Road location.
- Exceptional internal fit-out.
- Separate private offices.
- Charming courtyard garden.
- ERV of £55,000 P/A.

556 King's Road, Fulham, London, SW6 2DZ

Summary

Available Size	1,050 sq ft
Price	£725,000
Business Rates	Upon Enquiry
EPC Rating	C (68)

Description

556 Kings Road is a quite superb and FULLY VACANT retail premises enjoying a wonderful location in the heart of the Chelsea Design Quarter - widely regarded as the mecca for high-end interior design. The property is presented in quite outstanding condition and enjoys an exceptional glazed frontage of considerable height and prominence towards the favoured upper end of this globally-renowned destination. The Estimated Rental Value is c. £55,000 per annum thereby presenting an optimum GROSS YIELD in excess of 7.5%.

Arranged across two floors as both a large Showroom Retail space (c.35 sq.m.) and an excellent set of secondary offices and display areas to the Basement Floor (c.63 sq.m.), the property has been the subject of a meticulous programme of works over the years which now reveals both 'best in class' showroom premises and an immediate opportunity to launch a new business within this revered location.

The Ground Floor is bathed in natural light, enjoying high visibility from the road and a superbly appointed set of internal display features with notable lighting installations, whilst the Basement offers further excellent ceiling heights secondary showroom areas with tanked vaults and underfloor heating, a more formal private office, recently installed kitchen, washroom and access onto a super, secluded courtyard garden. The property also benefits from rear access and the Freehold to the building albeit the upper floor residential apartment is sold off on a long lease as well as the demise over the frontage to the property.

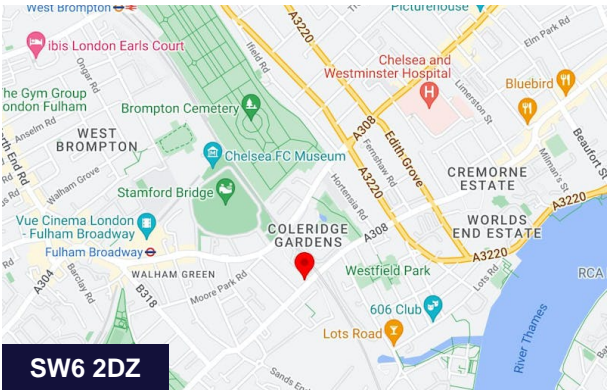
Location

The premises is superbly situated on a particularly sought-after stretch of King's Road, occupying an extremely convenient location by way of being central to the revered Chelsea Design Quarter as well as being within close proximity of SW3, Parsons Green, Fulham Broadway and the River Thames.

The immediate area is well supported by virtue of its low level of vacancy rates amongst commercial premises and presents a busy 'cross-roads' for Fulham residents from Moore Park, the Broadway and the locals of Parsons Green, establishing the area as an exciting, stimulating and varied commercial centre. Chelsea and Central London are moment away accessible via the District Line, or several bus routes that service the area.

Terms

- PRICE: £725,000
- RATEABLE VALUE: £35,500 Per Annum.
- RETAIL PREMISES: (USE CLASS E): 97.54 sq m / 1,050 sq ft.
- LOCAL AUTHORITY: London Borough of Hammersmith and Fulham.
- VAT: TBC.
- POSSESSION: Full vacant possession immediately on possession of legal formalities.
- LEGAL COSTS: Each party is to pay their own legal costs.
- VIEWINGS: Strictly by appointment with Sole Agents Winkworth Commercial.



Viewing & Further Information



Jonathan Hacker
020 7355 0285 | 07817 004082
jhacker@winkworth.co.uk

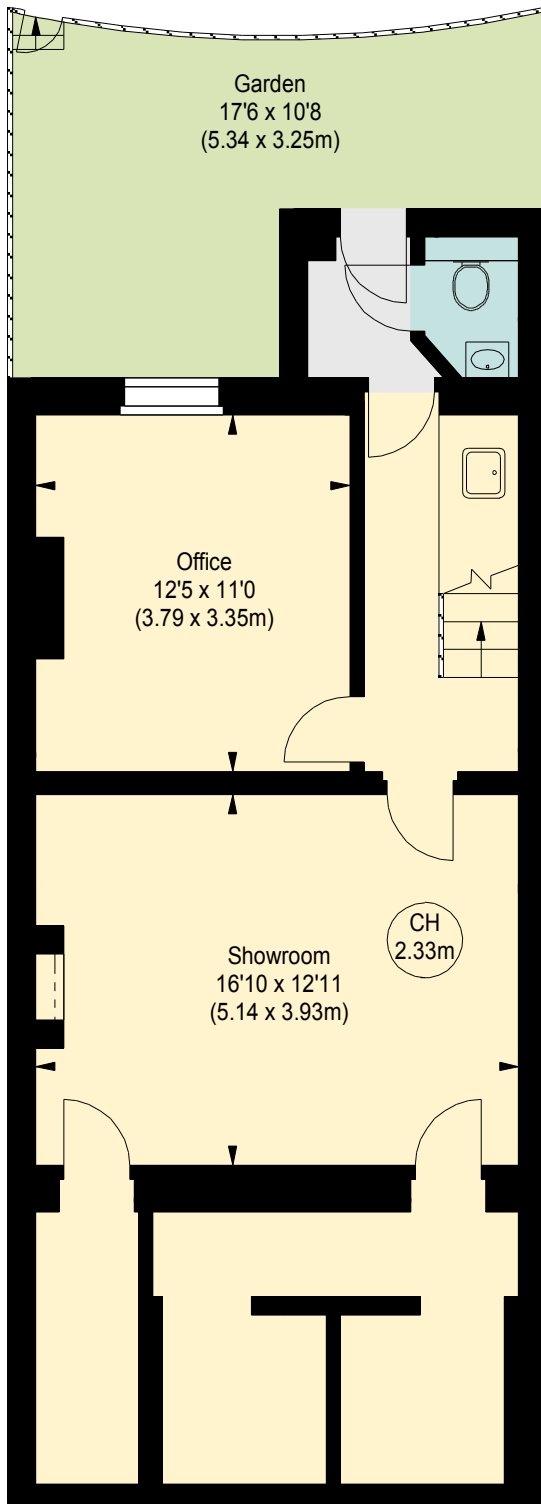
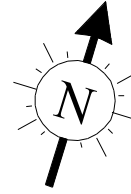


Adam Stackhouse
07817 004082 | 020 7355 0285
astackhouse@winkworth.co.uk

The above information contained within this email is sent subject to contract. These particulars are for general information only and do not constitute any part of an offer or contract. All statements contained therein are made without responsibility on the part of the vendors or lessors and are not to be relied upon as statement or representation of fact. Intending purchasers or lessees must satisfy themselves, by inspection, or otherwise, as to the correctness of each of the statements of dimensions contained in these particulars. Generated on 05/08/2025

KINGS ROAD, SW6

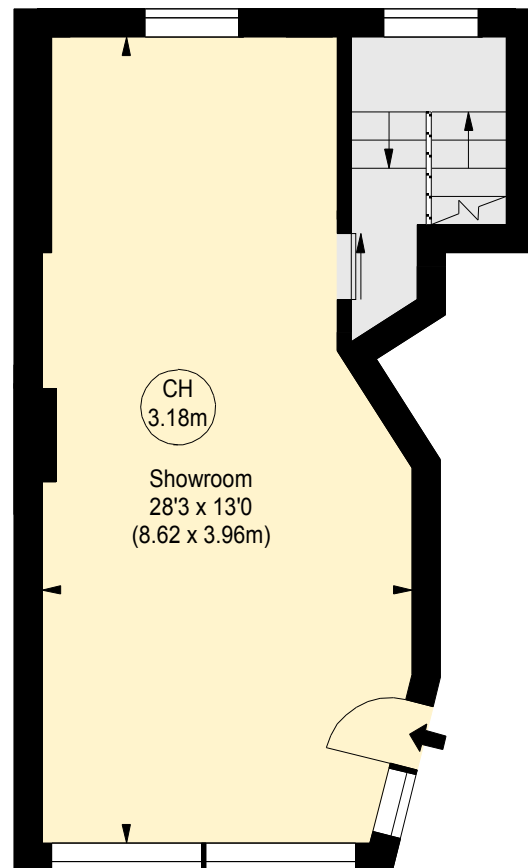
Approximate gross internal area
1050 sq ft / 97.54 sq m



BASEMENT

(674 sq ft.)

Key :
CH - Ceiling Height



GROUND FLOOR

(376 sq ft.)

Although every attempt has been made to ensure accuracy, all measurements are approximate.
This floorplan is for illustrative purposes only and not to scale.
Measured in accordance with RICS Standards.

