



39 Highlands Way, Whiteparish, Salisbury, Wiltshire, SP5 2SZ

Winkworth



THREE BEDROOM DETACHED PROPERTY IN POPULAR VILLAGE

39 Highlands Way is a detached house in the highly desirable village of Whiteparish. Day to day amenities are well provided for in the village and include a post office/store, primary school which has been graded outstanding by Ofsted, church, doctor's surgery and a good choice of public houses. Whiteparish has a thriving community and Village Hall. The market town of Romsey provides a wide array of facilities, a little further afield are the cathedral cities of Salisbury and Winchester. The commercial centres of Southampton and Bournemouth are also within a comfortable commute both with their regional airports, whilst the A36 is also only minutes away linking to the M3/A303/M25.

The property itself sits on an elevated position in Highlands Way and was the original show home when the development was first built. The house has been occupied by the same vendor since being purchased some 28 years ago. Since being in occupation the house has been updated throughout the years ensuring a modern finish. The accommodation comprises a spacious living room, which leads through to the dining room and separate kitchen benefitting from a utility room & a cloakroom. There are double doors out from the dining room to the rear garden which has been beautifully landscaped. To the first floor there are three bedrooms with the master featuring en suite facilities, whilst there is a further family bathroom to facilitate the remaining bedrooms.

Outside the property is approached by a private driveway leading to the single integral garage. There is a lovely front garden with side access to the rear. The rear gardens have been beautifully landscaped along with a shed and patio area.



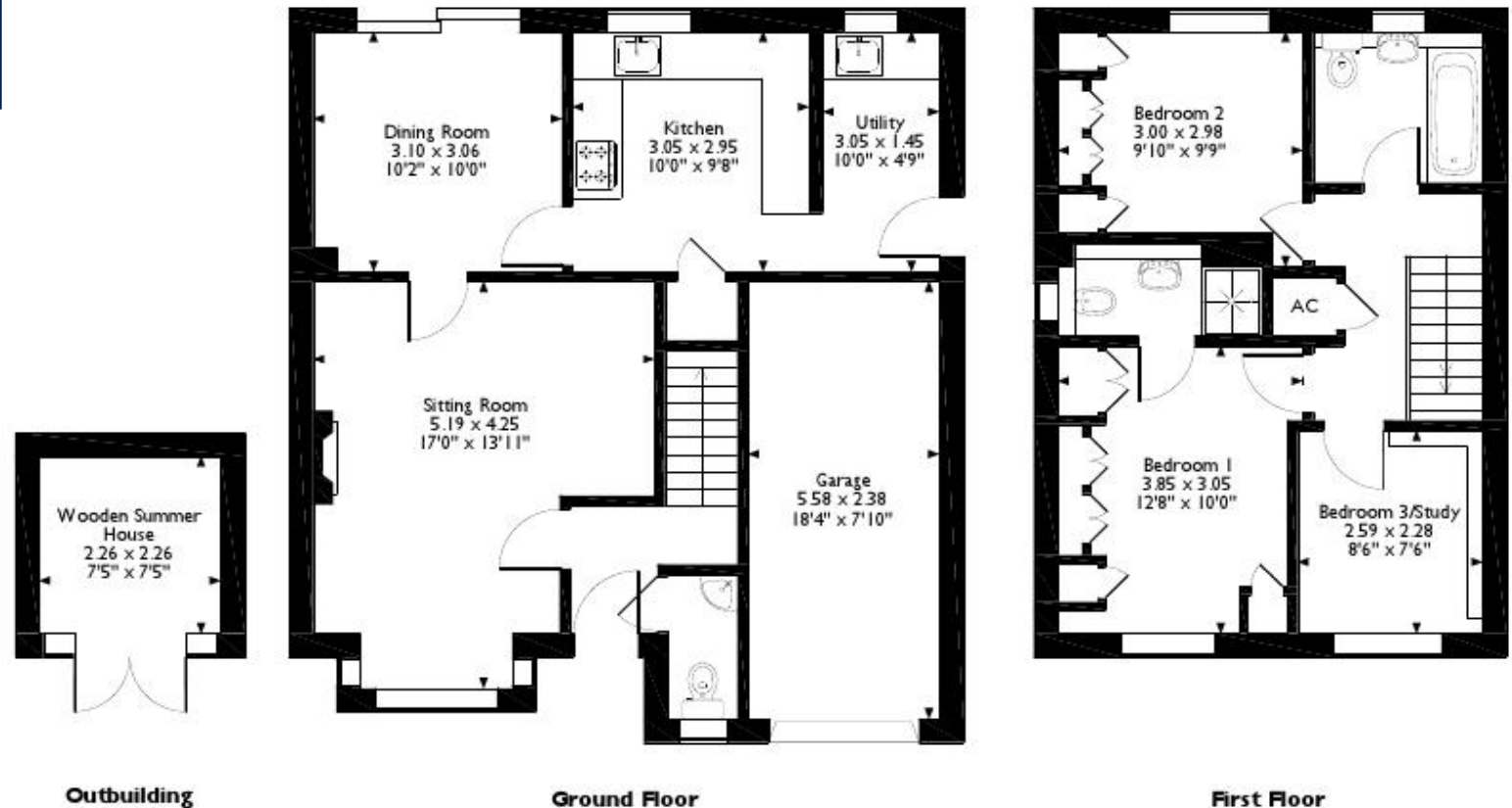
Winkworth

Address: 39 Highlands Way,
Whiteparish, Salisbury, SP5 2SZ

Council Tax Band: E



39 Highlands Way Whiteparish, Salisbury
Approximate Gross Internal Area
111 Sq M/1191 Sq Ft



Please note that the location of doors, windows and other items are approximate and this floorplan is to be used for illustrative purposes only. Unauthorized reproduction is prohibited.

winkworth.co.uk/romsey

Winkworth Romsey

18 Market Place, Romsey, Hampshire, SO51 8NA
01794 511911 | romsey@winkworth.co.uk

winkworth.co.uk/romsey

Winkworth Winchester

2 Black Swan Buildings, Southgate Street,
Winchester, Hampshire, SO23 9DT
01962 866777 | winchester@winkworth.co.uk

Winkworth Mayfair & Country House Department

11 Berkeley Street, Mayfair, London, W1J 8DS
020 7871 0589 | countryhouse@winkworth.co.uk

Winkworth

See things differently