



CORVETTE SQUARE, GREENWICH, LONDON, SE10
OFFERS IN EXCESS OF £400,000 LEASEHOLD

**A WELL-PRESENTED TWO BEDROOM SPLIT LEVEL
APARTMENT THAT IS FOUND ON THE 2ND AND 3RD
FLOOR OF THIS EX LOCAL AUTHORITY BLOCK,
SITUATED JUST MOMENTS FROM THE ROYAL PARK.**

Greenwich | 02030533033 | greenwich@winkworth.co.uk

Winkworth

winkworth.co.uk

See things differently



DESCRIPTION:

A well-presented two bedroom split level apartment that is found on the 2nd and 3rd floor of this ex local authority block, situated just moments from the Royal Park.

In very good order throughout, the property measures circa 683 square foot, and features a 10ft private balcony. Internally there is a 17ft reception room and a well fitted kitchen. Upstairs there are two double bedrooms and a separate WC. There are communal gardens to the front.

Corvette Square is perfectly located on the corner of Park Row and Trafalgar Road and sits on the cusp of East and West Greenwich. As mentioned the Royal Park with its Observatory is within a minutes walk. The town centre is also extremely close by, which offers a fantastic selection of shops and restaurants, along with mainline rail, DLR, riverboat service and Greenwich Market. There is no chain

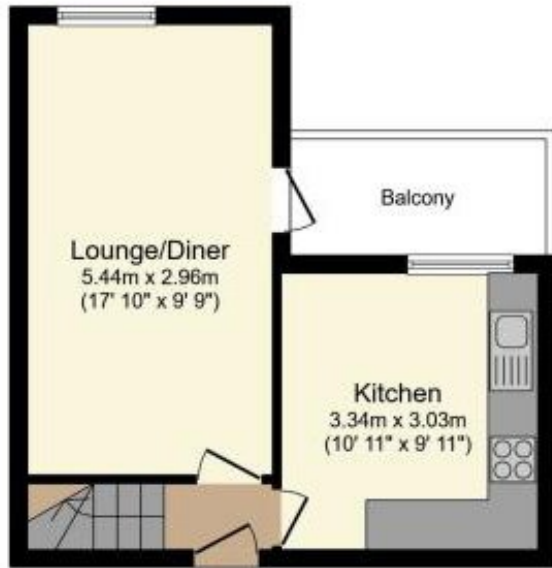
AT A GLANCE

- 2 bedroom flat
- split level
- 2nd and 3rd floors
- good condition
- private balcony
- 17ft reception room
- circa 683 sq ft
- close to park
- close to town centre





First Floor



Second Floor



Total floor area 63.4 sq.m. (683 sq.ft.) approx

This floorplan is for illustration purposes only and is not to scale. The position and size of doors, windows, appliances and other features are approximate.

Energy Efficiency Rating	
Current	Potential
Very energy efficient - lower running costs	
A (92-100)	
B (81-91)	
C (69-80)	73
D (55-68)	73
E (39-54)	
F (21-38)	
G (1-20)	
Not energy efficient - higher running costs	
England, Scotland & Wales EU Directive 2002/91/EC	

Greenwich | 02030533033 | greenwich@winkworth.co.uk

Winkworth

winkworth.co.uk

See things differently

Winkworth wishes to inform prospective buyers and tenants that these particulars are a guide and act as information only. All our details are given in good faith and believed to be correct at the time of printing but they don't form part of an offer or contract. No Winkworth employee has authority to make or give any representation or warranty in relation to this property. All fixtures and fittings, whether fitted or not are deemed removable by the vendor unless stated otherwise and room sizes are measured between internal wall surfaces, including furnishings.