



INVERNESS TERRACE, W2  
£850,000 SHARE OF FREEHOLD

Winkworth





## INVERNESS TERRACE, W2

**On the fifth floor of a white stucco fronted building, a two-bedroom, two-bathroom penthouse apartment.**

The accommodation comprises open plan kitchen with kitchen / reception room, master bedroom with en-suite shower and built-in wardrobes, guest bedroom and family bathroom.

Views across Bayswater can be enjoyed from the front and rear and the building has recently undergone internal redecoration.

Inverness Terrace, with its handsome period terraces, is a sought-after central London location in the vicinity of Paddington and Bayswater. Located in the City of Westminster - W2. London's most notable Royal Park Hyde Park and Kensington Gardens are just a short stroll away. To the West, you have the popular, fashionable, and multi-cultural Notting Hill.

Share of Freehold

Approximately 989 Years Remaining

Service Charge: £3,606.53 per annum

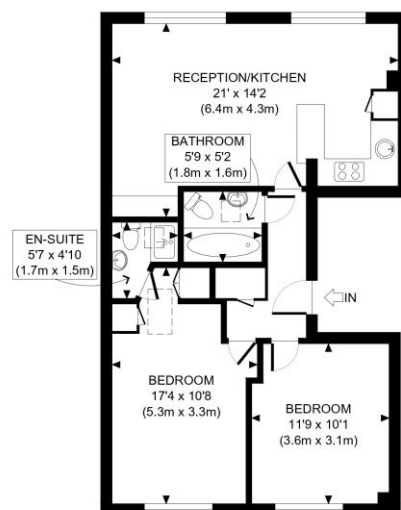
Ground Rent: £225.00 per annum

Council Tax: Band G, Westminster









FIFTH FLOOR  
GROSS INTERNAL  
FLOOR AREA 654 SQ FT

APPROX. GROSS INTERNAL FLOOR AREA: 654 SQ FT/ 61 SQM

**Winkworth**

This plan is for illustrative purposes only and should be used as such by any prospective client. Whilst every attempt has been made to ensure the accuracy of the Floor Plan contained here, measurements of the doors, windows, rooms and any other items are approximate and no responsibility is taken for any errors, omissions, or misstatement. The services, systems and appliances shown have not been tested and no guarantee as to the operability or efficiency can be given.

PROPERTY PHOTO PLANS COOK  
THE STEP-UP FOR PROPERTY MARKETING

Score	Energy rating	Current	Potential
92+	A		
81-91	B		
69-80	C		69 C
55-68	D	67 D	
39-54	E		
21-38	F		
1-20	G		

Paddington and Bayswater | 020 7240 3322 | paddington@winkworth.co.uk

winkworth.co.uk

Winkworth wishes to inform prospective buyers and tenants that these particulars are a guide and act as information only. All our details are given in good faith and believed to be correct at the time of printing but they don't form part of an offer or contract. No Winkworth employee has authority to make or give any representation or warranty in relation to this property. All fixtures and fittings, whether fitted or not are deemed removable by the vendor unless stated otherwise and room sizes are measured between internal wall surfaces, including furnishings.

**Winkworth**