



9 MILTON GARDENS, WOKINGHAM, BERKSHIRE, RG40 1DA  
**£425,000 FREEHOLD**

**Winkworth**





## MILTON GARDENS

This attractive three bedroom home is in a prime position in a highly sought after location which is in very close proximity of Wokingham town centre.

The downstairs accommodation boasts a spacious living/dining room with a bay window. There is also a separate kitchen and a downstairs cloakroom whilst upstairs there are three good sized bedrooms and the family bathroom. Externally, to the rear there is a private rear garden and the property also benefits from having a garage in a nearby block. Parking is available. The property would benefit from some updating in the near future but is priced accordingly.

**EPC: C**

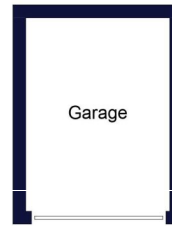




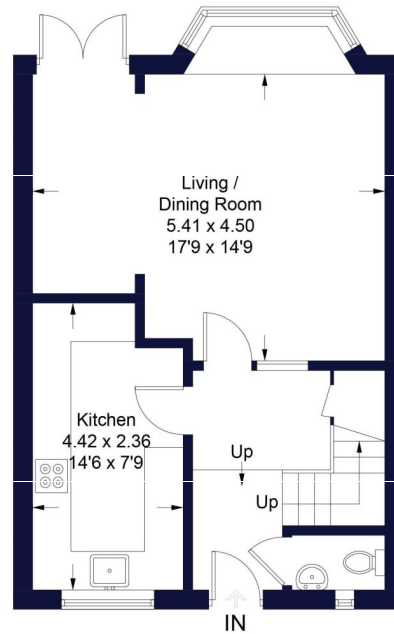
## Milton Gardens

Approximate Gross Internal Area = 88.3 sq m / 951 sq ft  
(Excluding Garage)

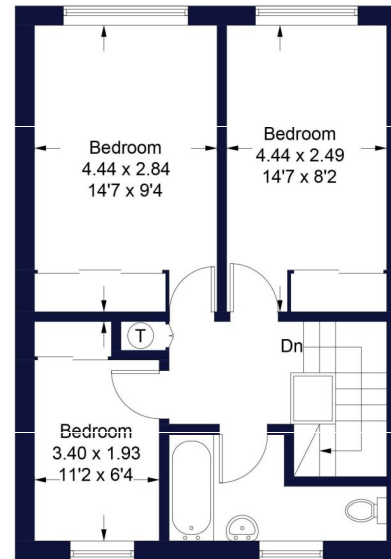
Winkworth



(Not Shown In Actual  
Location / Orientation)



**Ground Floor**  
Sq m 44.3 / Sq ft 477



**First Floor**  
Sq m 44.0 / Sq ft 474

Illustration for identification purposes only, measurements are approximate,  
not to scale. FloorplansUsketch.com © 2024 (ID1041890)

Wokingham | 01189 072777 | [wokingham@winkworth.co.uk](mailto:wokingham@winkworth.co.uk)

Winkworth wishes to inform prospective buyers and tenants that these particulars are a guide and act as information only. All our details are given in good faith and believed to be correct at the time of printing but they don't form part of an offer or contract. No Winkworth employee has authority to make or give any representation or warranty in relation to this property. All fixtures and fittings, whether fitted or not are deemed removable by the vendor unless stated otherwise and room sizes are measured between internal wall surfaces, including furnishings.

Winkworth