



STONELEIGH STREET, LONDON, W11  
**£4,500 PER MONTH UNFURNISHED**

Winkworth





## STONELEIGH STREET, LONDON, W11

Entered through the main entrance on the raised ground floor leading to a outstanding double reception and dining area with two fabulous fireplaces, lovely high ceilings and sash windows, this three-floor maisonette offers great accommodation. The reception/dining room is perfect for social and entertaining gatherings accompanied by an abundance of natural light. The impressive fully fitted kitchen with French doors opens out onto a terrace with a staircase leading down into a magical private garden.

The upper accommodation includes two double bedrooms on the first floor both offering large built-in wardrobes, a utility room, generous bathroom with a freestanding bath, double sink and additional separate shower. There is a further third bedroom located on the second floor offering hidden under eaves storage.

Hidden away in this beautiful pocket close to Holland Park, Stoneleigh Street is a stunning road just to the west of Clarendon Cross and within a short distance from Avondale Park. The property is perfectly located within a short distance of all the renowned eateries and amenities of Holland Park and Notting Hill. Transport links include Holland Park Central line Tube, an array of bus routes and easy access to M4, M40, and Heathrow.

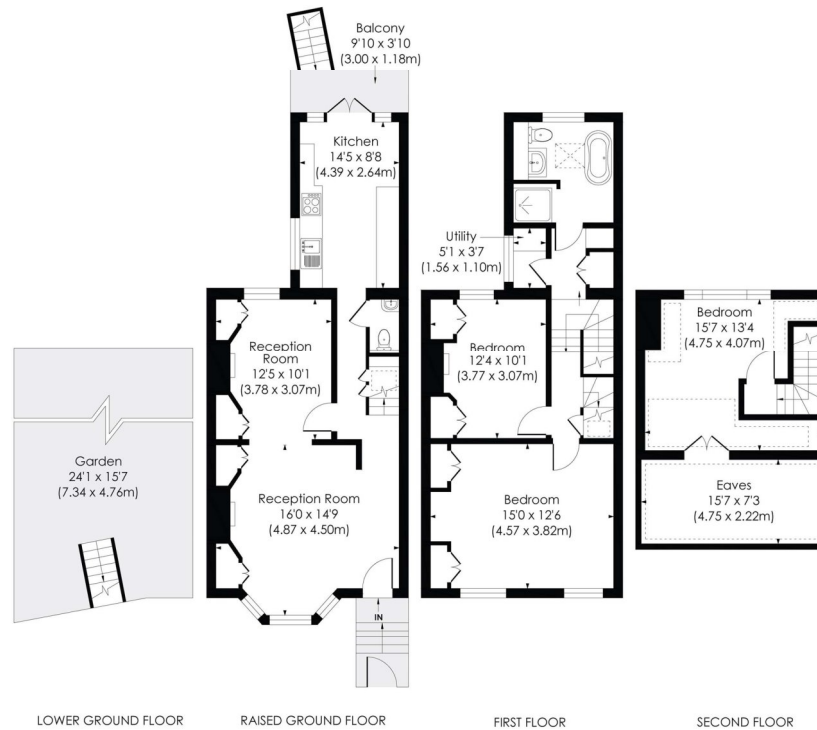






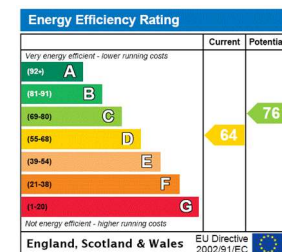
## STONELEIGH STREET, W11

Approx. Gross Internal Floor Area  
1429 Sq. ft/132.75 Sq. m (Incl. Faves)



© Pixangle Property Marketing Ltd. Info@pixangle.com Tel: 0208 870 2118

This floor plan has been prepared for the purpose of illustration only in accordance with the latest RICS code of measuring practice and is not to scale. All measurements and areas are approximate and whilst every effort has been made to ensure the accuracy of the plan contained here, no responsibility is taken for any error, omission or misstatement.



North Kensington | 020 7792 5000 | northkensington@winkworth.co.uk

winkworth.co.uk

Winkworth wishes to inform prospective buyers and tenants that these particulars are a guide and act as information only. All our details are given in good faith and believed to be correct at the time of printing but they don't form part of an offer or contract. No Winkworth employee has authority to make or give any representation or warranty in relation to this property. All fixtures and fittings, whether fitted or not are deemed removable by the vendor unless stated otherwise and room sizes are measured between internal wall surfaces, including furnishings.

**Winkworth**