

BASING WAY, FINCHLEY, LONDON, N3
£425,000 LEASEHOLD

A THREE BEDROOM SECOND FLOOR PURPOSE BUILT FLAT

Finchley | 020 8349 3388 | finchley@winkworth.co.uk



Winkworth

DESCRIPTION:

We are pleased to offer for sale this three bedroom second floor top) purpose built apartment, being ideally located for amenities and transport links, including Finchley Central underground station, Pure Gym and Stephens House & Gardens. The property comprises reception with balcony, separate kitchen, three bedrooms and bathroom. Offered on a chain free basis.

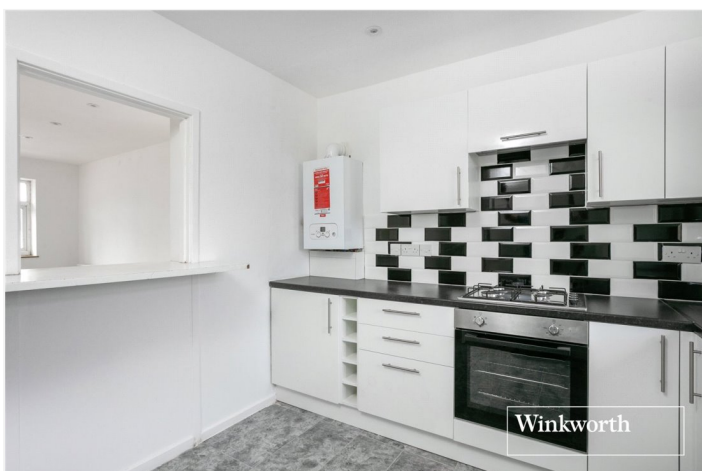
TENURE:

Leasehold 86 years
Service charge £900.00 per annum (Incl. insurance & maintenance)

COUNCIL TAX: Band C

AT A GLANCE

- Purpose built flat
- Second floor
- Three bedrooms
- Reception with balcony
- Separate kitchen
- Offered chain free



Winkworth

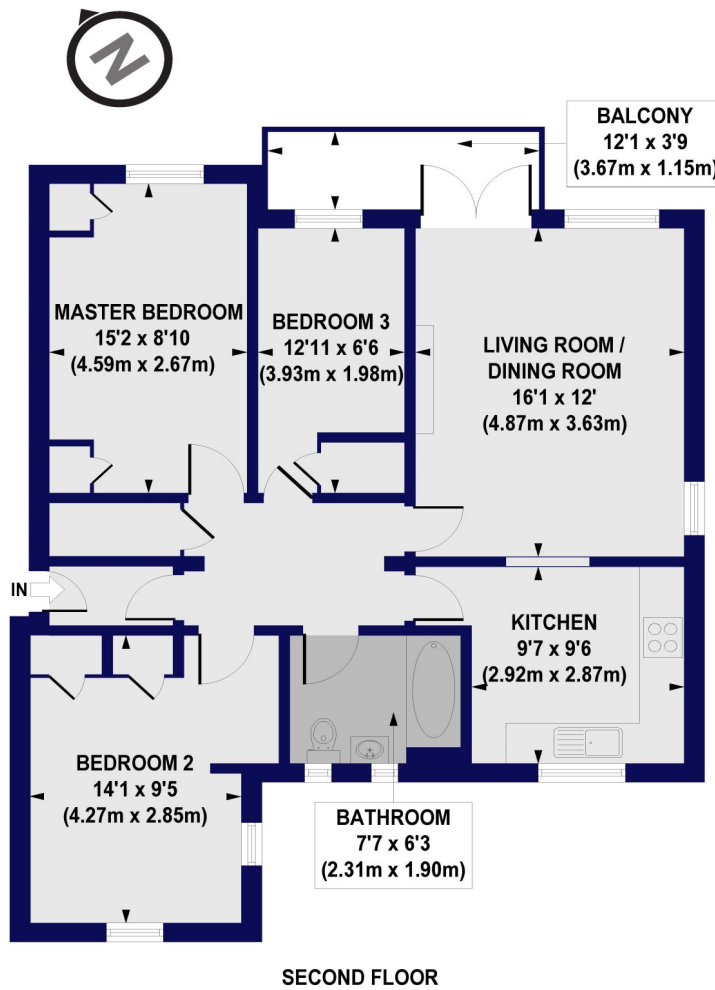


Winkworth



Basing Way, N3

Approx. Gross Internal Floor Area 831 sq. ft / 77.16 sq. m



All measurements of walls, doors, windows, fittings and appliances, including their size and location, are shown as standard sizes and do not constitute any warranty or representation by the seller, their agent or CP Creative. Any intending purchaser must satisfy himself by inspection or otherwise as to the correctness of the information contained in these plans. This plan is for illustrative purposes only and should be used as such by any prospective purchasers.

Winkworth

