

Kings Road, Chelsea, London, SW10

£634.62 per week* / £2,750 per month – Furnished

A bright, contemporary, two bedroom flat located on the Raised Ground Floor, with South-facing private garden.

1 Bedroom | 1 Reception Room | 1 Bathroom | Garden | Ground Floor Flat | 515 Approx sq ft | EPC: C

APPLICANT FEES MAY BE APPLICABLE
HOLDING DEPOSIT OF 1 WEEK'S RENT
SECURITY DEPOSIT OF 5 WEEKS' RENT

Winkworth

winkworth.co.uk

for every step...



DESCRIPTION

This stylish property features a bright, open-plan kitchen/reception room, a good sized master bedroom with built in storage, second bedroom that is currently set up as a study and modern shower room. The second bedroom leads out to the private, South-facing garden, and the whole flat benefits from wooden floors throughout. The property is available from the end of July on a furnished basis.

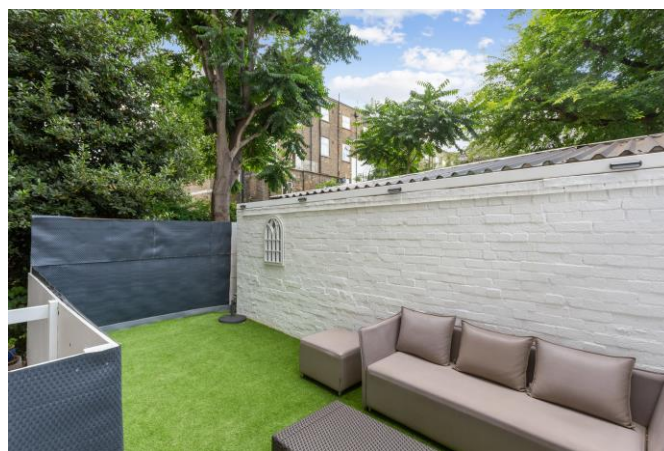


ACCOMMODATION

1 Bedroom, 1 Reception Room,
1 Bathroom, Garden, Ground Floor,
Furnished, 515 Approx Sq ft

COUNCIL TAX BAND

Band D



Energy Efficiency Rating		
	Current	Potential
Very energy efficient - lower running costs		
(92+) A		
(81-91) B		
(69-80) C	73	81
(55-68) D		
(39-54) E		
(21-38) F		
(1-20) G		
Not energy efficient - higher running costs		
England, Scotland & Wales	EU Directive 2002/91/EC	



KINGS ROAD SW10

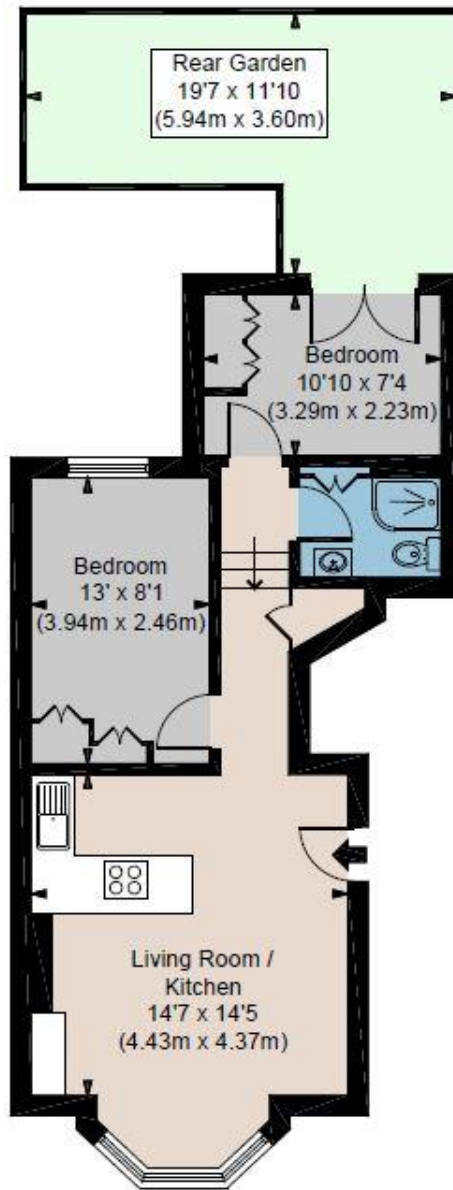
APPROX. GROSS INTERNAL AREA *

515 Ft² - 47.82 M²

Illustration For Identification Only, Not to Scale

All Calculations include Any/All Areas Under 1.5m Head Height.

* As Defined by RICS - Code of Measuring Practice



RAISED GROUND FLOOR

Floorplan is for illustrative purposes only and is not to scale.
Every attempt has been made to ensure the accuracy of the floorplan shown, however all measurements, fixtures, fittings and data shown are an approximate interpretation for illustrative purposes only.
Liability for errors, omissions or mis-statement through negligence or otherwise is hereby excluded.

CP CREATIVE
PROPERTY MARKETING

This floorplan is for illustration purposes only and is not to scale. The position and size of doors, windows, appliances and other features are approximate.

**Please note, rent cannot be paid on a weekly basis*

South Kensington Lettings | 020 7370 6767 | lettings.southken@winkworth.co.uk

Winkworth

winkworth.co.uk

for every step...

Winkworth wishes to inform prospective buyers and tenants that these particulars are a guide and act as information only. All our details are given in good faith and believed to be correct at the time of printing but they don't form part of an offer or contract. No Winkworth employee has authority to make or give any representation or warranty in relation to this property. All fixtures and fittings, whether fitted or not are deemed removable by the vendor unless stated otherwise and room sizes are measured between internal wall surfaces, including furnishings.