



GOLDSMITH AVENUE, LONDON, NW9
£640,000 FREEHOLD

ATTRACTIVE THREE BEDROOM END OF TERRACE HOME.

Kingsbury | 020 8204 0000 | kingsbury@winkworth.co.uk



winkworth.co.uk

See things differently



Winkworth
for every step...

Winkworth are proud to introduce to the market this gorgeous three-bedroom end of terrace home which has been extended and refurbished to a quality standard, with the added benefit of planning permission granted for a full loft extension as well as a rear first floor extension. The property presents an array of living space dwelling over 1037sqft boasting a cosy living room, attractive open plan modern kitchen with stylish diner and French doors overlooking the stylish rear garden which flaunts a charming patio area, clean and low maintenance artificial lawn, and the added bonus of a spacious outhouse. The perfect space for entertaining guests. The first floor accommodates two double and one single bedrooms. This move in ready property is beautifully positioned on a peaceful residential road set within the catchment area acclaimed local schools. West Hendon playing fields and the Silver Jubilee Park are located close by as are the amenities and transport links of Hendon, Colindale and Kingsbury making this the perfect location for a family home. Brent Cross Shopping Centre is less than a ten minute journey and links to the M1 and A406 are effortless. An internal viewing is advised in order to appreciate this property at its entirety.

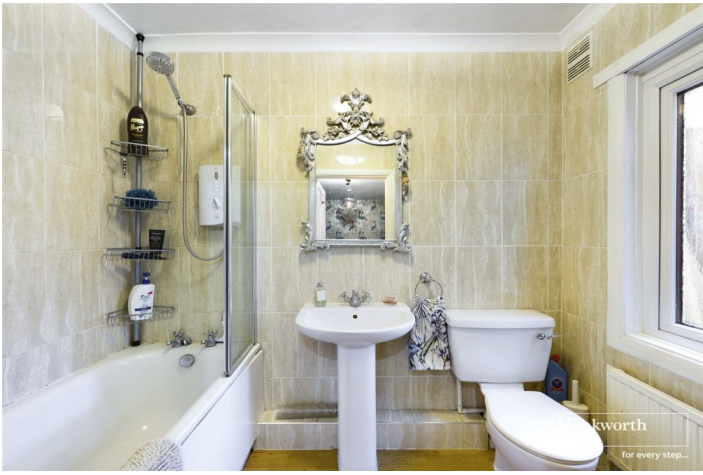


Winkworth

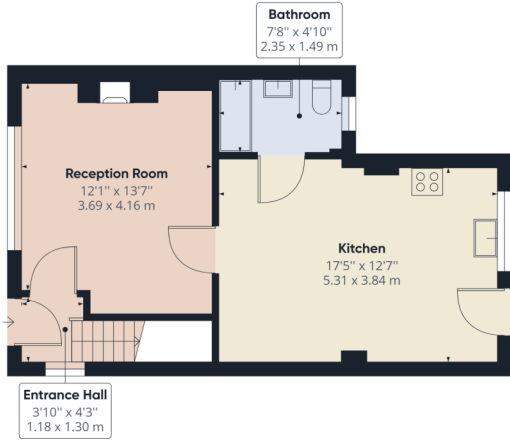


Winkworth

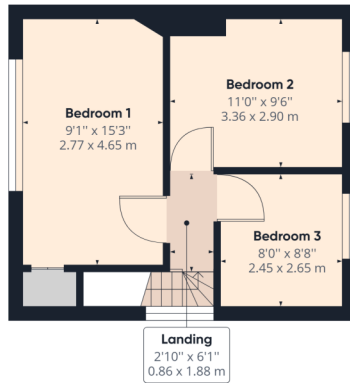




Winkworth

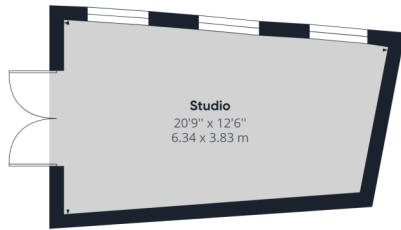


Ground Floor Building 1



Floor 1 Building 1

Approximate total area⁽¹⁾
1037.82 ft²
96.42 m²



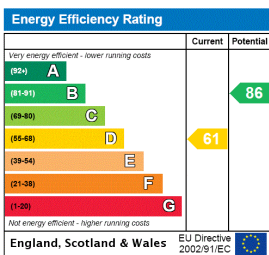
Ground Floor Building 2

(1) Excluding balconies and terraces

While every attempt has been made to ensure accuracy, all measurements are approximate, not to scale. This floor plan is for illustrative purposes only.

GIRAFFE360

This floorplan is for illustration purposes only and is not to scale. The position and size of doors, windows, appliances and other features are approximate.



Kingsbury | 020 8204 0000 | kingsbury@winkworth.co.uk



winkworth.co.uk

See things differently

Winkworth wishes to inform prospective buyers and tenants that these particulars are a guide and act as information only. All our details are given in good faith and believed to be correct at the time of printing but they don't form part of an offer or contract. No Winkworth employee has authority to make or give any representation or warranty in relation to this property. All fixtures and fittings, whether fitted or not are deemed removable by the vendor unless stated otherwise and room sizes are measured between internal wall surfaces, including furnishings.