

FULHAM ROAD | SW3



Winkworth


Fulham Road SW3

RENT: £1,125pw / £4,875pcm

- 2 Bedrooms
- 2 Bathrooms
- 1 Reception Room
- 1st Floor with lift
- Concierge Service
- Resident Parking
- Furnished

LOCAL AUTHORITY: Royal Borough of Kensington & Chelsea

COUNCIL TAX BAND: Band G

Energy Efficiency Rating		
	Current	Potential
Very energy efficient - lower running costs		
(92+) A		
(81-91) B		
(69-80) C	78	80
(55-68) D		
(39-54) E		
(21-38) F		
(1-20) G		
Not energy efficient - higher running costs		
England, Scotland & Wales	EU Directive 2002/91/EC	



Knightsbridge & Chelsea | 020 7589 6616
knightsbridge@winkworth.co.uk



for every step...

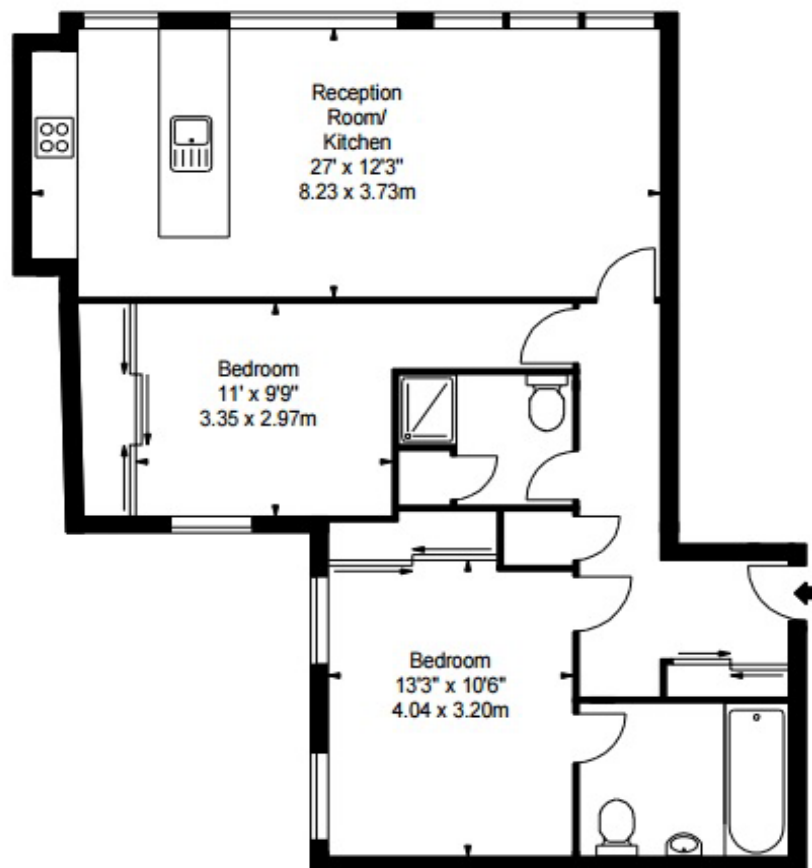
winkworth.co.uk

Winkworth wishes to inform prospective buyers and tenants that these particulars are a guide and act as information only. All our details are given in good faith and believed to be correct at the time of printing but they don't form part of an offer or contract. No Winkworth employee has authority to make or give any representation or warranty in relation to this property. All fixtures and fittings, whether fitted or not are deemed removable by the vendor unless stated otherwise and room sizes are measured between internal wall surfaces, including furnishings.

**FLAT 1B,
161 FULHAM ROAD, SW3**

**Approx. Gross Internal Area *
865 Ft² - 80.36 M²**

Illustration For Identification Purposes Only. Not to Scale
* As Defined by RICS - Code of Measuring Practice



FIRST FLOOR