



CLIPPER APARTMENTS, GREENWICH, LONDON, SE10
£1,250,000 LEASEHOLD

THIS LUXURIOUS SPLIT-LEVEL PENTHOUSE IS LOCATED ON THE THIRD AND FOURTH FLOOR OF THIS MODERN DEVELOPMENT IN THE HEART OF GREENWICH, OFFERING OUTSTANDING VIEWS OF THE RIVER AND CUTTY SARK. WITH A SPACIOUS FLOOR PLAN OF 1700 SQUARE FEET, THIS PENTHOUSE IS PERFECT FOR THOSE WHO DESIRE THE ULTIMATE LIVING EXPERIENCE.

Greenwich | 02030533033 | greenwich@winkworth.co.uk

Winkworth



DESCRIPTION:

This luxurious split-level penthouse is located on the third and fourth floor of this modern development in the heart of Greenwich, offering outstanding views of the river, Cutty Sark and the heart of historic Greenwich. With a spacious floor plan of 1700 square feet, this penthouse is perfect for those who desire the ultimate living experience.

Along with a large entrance hallway you will find three spacious bedrooms, each with its own ensuite bathroom. Each room benefits from excellent storage and superb views. As you make your way up to the top level, you'll find a magnificent 37ft reception room, with high ceilings, perfect for entertaining guests or enjoying quiet evenings with family. The reception room is flooded with natural light, and from here, you can access the stunning, large private terrace that offers breathtaking views of the river, Cutty Sark, Canary Wharf and Greenwich Park. The kitchen also sits on the top level and is presented in perfect order, with fitted appliances. The property also comes with a private parking space.

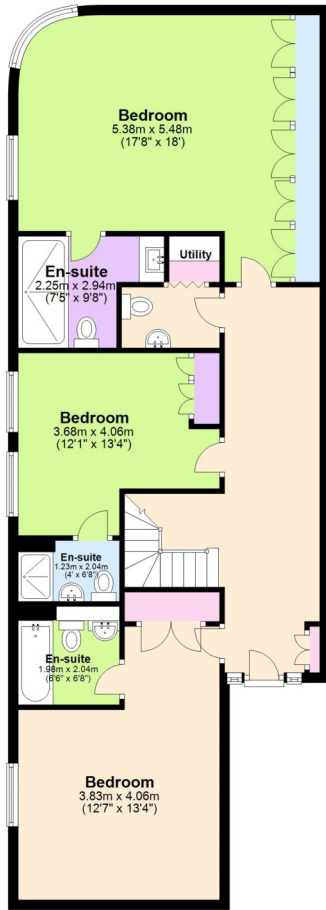
This penthouse is situated in the heart of Greenwich, just moments from the Royal Park, providing easy access to a wide range of amenities, including restaurants, shops, and entertainment venues. Mainline Rail, DLR and Riverboat service are located minutes away. The building also features secure parking for residents.

With its luxurious finishes, stunning views, and prime location, this split-level penthouse is the ultimate in luxury living.

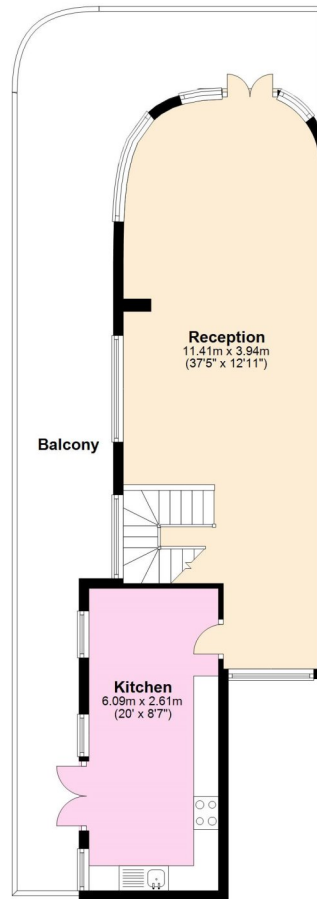




THIRD FLOOR
Approx. 100.2 sq. metres (1079 sq. feet)



FOURTH FLOOR
Approx. 57.7 sq. metres (621 sq. feet)



Total area: approx. 157.9 sq. metres (1700 sq. feet)

This floorplan is for illustration purposes only and is not to scale. The position and size of doors, windows, appliances and other features are approximate.

Greenwich | 02030533033 | greenwich@winkworth.co.uk

Winkworth

winkworth.co.uk

See things differently

Winkworth wishes to inform prospective buyers and tenants that these particulars are a guide and act as information only. All our details are given in good faith and believed to be correct at the time of printing but they don't form part of an offer or contract. No Winkworth employee has authority to make or give any representation or warranty in relation to this property. All fixtures and fittings, whether fitted or not are deemed removable by the vendor unless stated otherwise and room sizes are measured between internal wall surfaces, including furnishings.