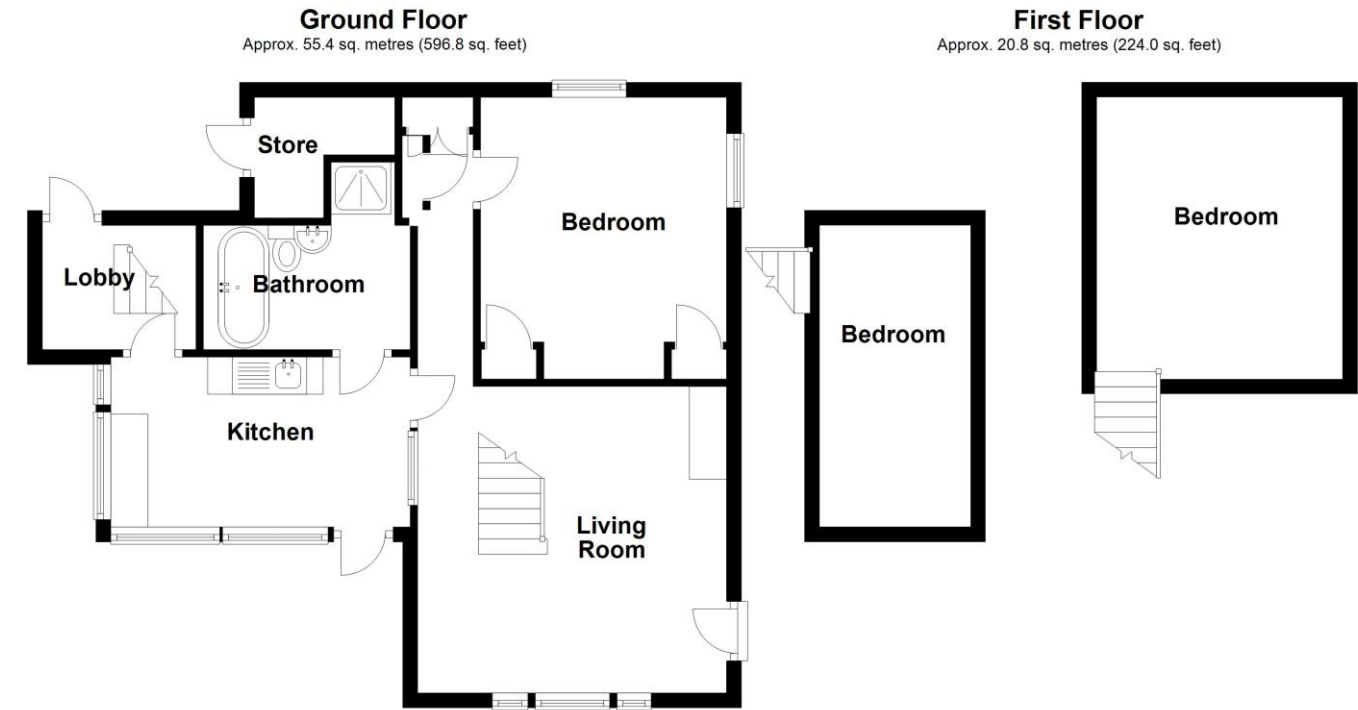
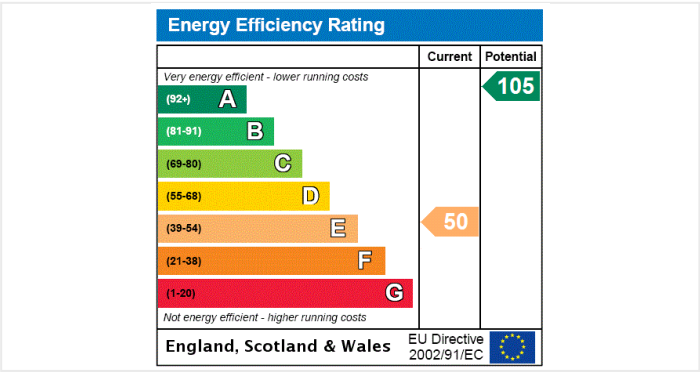


The Old School, Aunsby, Sleaford, Lincolnshire

This floorplan is for illustration purposes only and is not to scale. The position and size of doors, windows, appliances and other features are approximate.



Total area: approx. 76.3 sq. metres (820.8 sq. feet)



The Old School, Aunsby, Sleaford, Lincolnshire, NG34 8TA

£210,000 Freehold

A beautiful former village school this stone three bedroom home still retains period features and historic quirks hinting at its past such as vintage graffiti in the entrance from bored school children and a superb vaulted beamed and braced ceiling.

Former Village Stone School | Three Bedrooms | Period Features | Off Road Parking | Gravelled Courtyard Garden | Desirable Village | Viewing Essential



See things differently.



See things differently.

Winkworth Sleaford | 01529 303377 | sleaford@winkworth.co.uk

winkworth.co.uk/sleaford

Under the Property Misdescriptions Act 1991 these particulars are a guide and act as information only. All details are given in good faith and are believed to be correct at time of printing. Winkworth give no representation as to their accuracy and potential purchasers or tenants must satisfy themselves or otherwise as to their correctness. No employee of Winkworth has authority to make or give any

ACCOMMODATION

Living Room - 13'9" x 13'5" (4.2m x 4.1m) Approached through an arched stone vestibule a shaped hardwood door leads to the Living Room with part stain glass window to front elevation, window to side elevation, a vaulted beamed and braced ceiling, part panelled walls, log burner in recessed fitment with Adam style surround, stairs to mezzanine bedroom.

Mezzanine Bedroom - 13' x 12'4" (3.96m x 3.76m) Set into the vaulted and beamed ceiling this character room has a cosy cottage feel and window to rear elevation.

Ground Floor Bedroom - 12'8" x 10'5" (3.86m x 3.18m) Having windows to both side and rear elevation, a range of fitted furniture including wardrobes and over head storage, beamed ceiling.

Inner Hall - Having two built in storage cupboards.

Kitchen - 13'3" x 7'6" (4.04m x 2.29m) windows to front and side elevations, hardwood door to front elevation, fitted double base unit with stainless steel sink, separate double base unit, contemporary flooring.

Bathroom - Fitted with a 4 piece suite comprising freestanding roll top bath with mixer shower over, close coupled WC, pedestal hand wash basin, ceramic tiled shower cubicle with electric shower over.

Rear Lobby - Tiled and wood flooring, door to rear aspect, ladder staircase to bedroom.

Bedroom - 14' x 7'3" (4.27m x 2.2m) Windows to front and rear elevations, shaped pitched ceiling.

Outside - To the front of the property is a gravelled driveway offering off street parking and a covered paved seating area.

The rear is laid to a low maintenance gravelled courtyard garden.

The gardens continue to the side aspect with a raised patio currently housing hot tub, a substantial timber outbuilding split into 2 rooms, a store 9'5" x 3'5" and a rear room currently used as a guest bedroom 9'8" x 9'6"

LOCAL AUTHORITY

North Kesteven District Council

TENURE

Freehold

COUNCIL TAX BAND



B

