



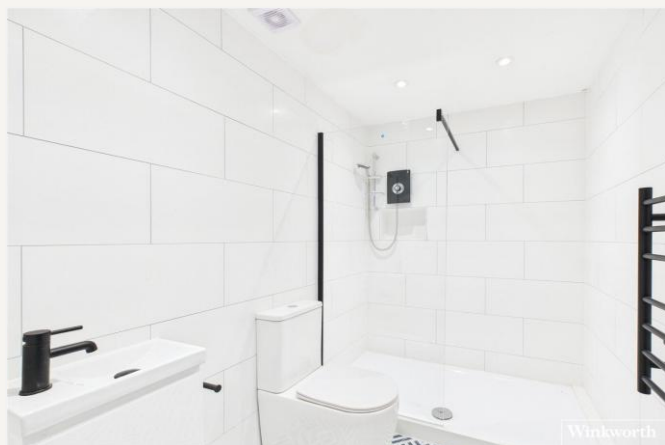
London Road, Newbury, Berkshire RG14 1JL

£1,000 per month

1  0  1 

A brand new studio apartment in a refurbished development in Newbury town centre. Offering lounge/bedroom with fitted kitchen comprising integrated fridge/freezer, electric oven and hob and washer/dryer. Available late January. Parking can be available by separate negotiation.

LOCATION

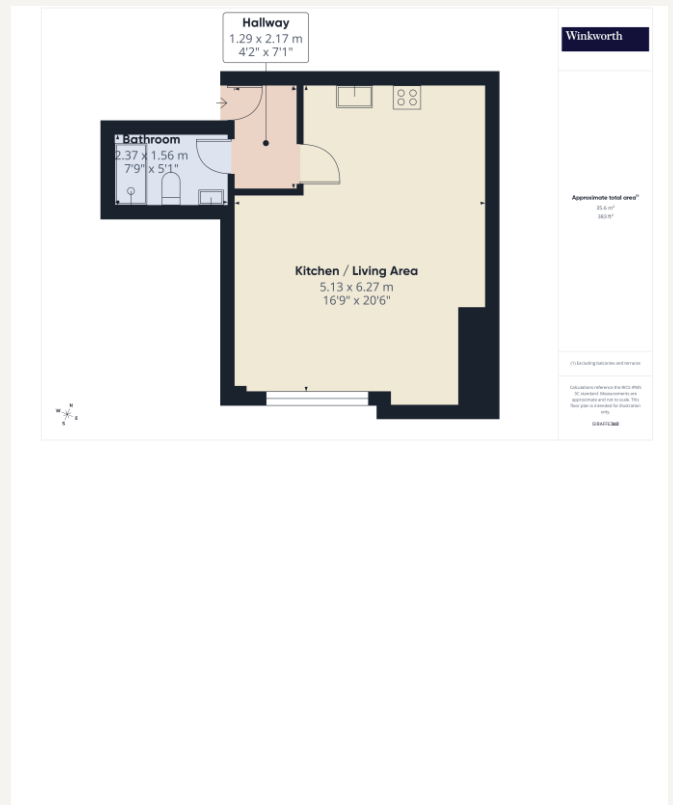


Newbury

01635 552552 | newbury@winkworth.co.uk

Winkworth

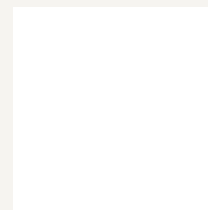
for every step...



MATERIAL INFO

Deposit: £1153.84
Holding Deposit: £230.77
Council Tax Band: T.B.C

For more information, scan the QR code or visit the link below



<https://www.winkworth.co.uk/rent/property/NEB260017>

Where no figures are shown, we have been unable to ascertain the information. All figures that are shown were correct at the time of printing.

Newbury
01635 552552 | newbury@winkworth.co.uk

Winkworth

for every step...

Winkworth wishes to inform prospective buyers and tenants that these particulars are a guide and act as information only. All our details are given in good faith and believed to be correct at the time of printing but they don't form part of an offer or contract. No Winkworth employee has authority to make or give any representation or warranty in relation to this property. All fixtures and fittings, whether fitted or not are deemed removable by the vendor unless stated otherwise and room sizes are measured between internal wall surfaces, including furnishings.