



PAULINE HOUSE, OLD MONTAGUE STREET, LONDON, E1
£295,000 LEASEHOLD

A SPACIOUS THIRTEENTH FLOOR TWO DOUBLE BEDROOM APARTMENT WITH FANTASTIC VIEWS OF THE CITY

Shoreditch | 020 7749 7650 | shoreditch@winkworth.co.uk

Winkworth

winkworth.co.uk

See things differently

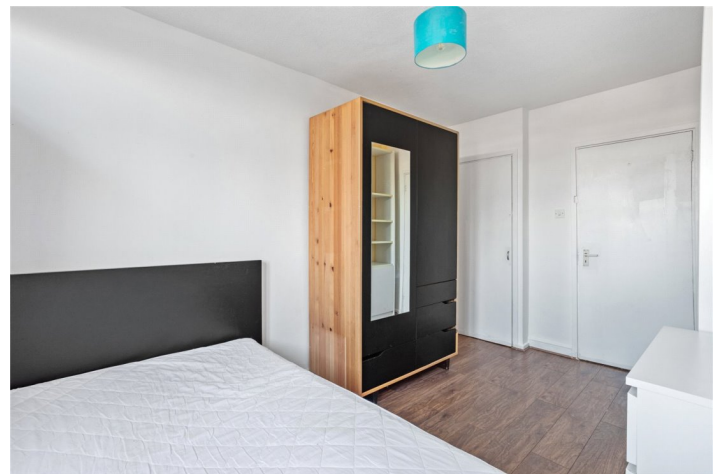
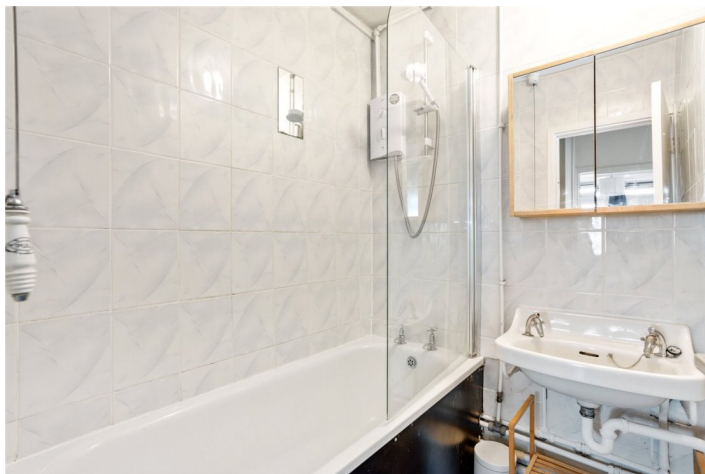


DESCRIPTION:

CASH BUYERS PREFERABLE A spacious thirteenth floor two double bedroom apartment ideally located near Whitechapel Underground Station with stunning views across London. The property comprises entrance hallway with two built in storage cupboards, separate bathroom and W/C, two large equally sized double bedrooms, separate fitted kitchen and a generous size living room with access to a west-facing private balcony. The development is due to undergo some upcoming works to the building which will include new windows and a general improvement of the premises.

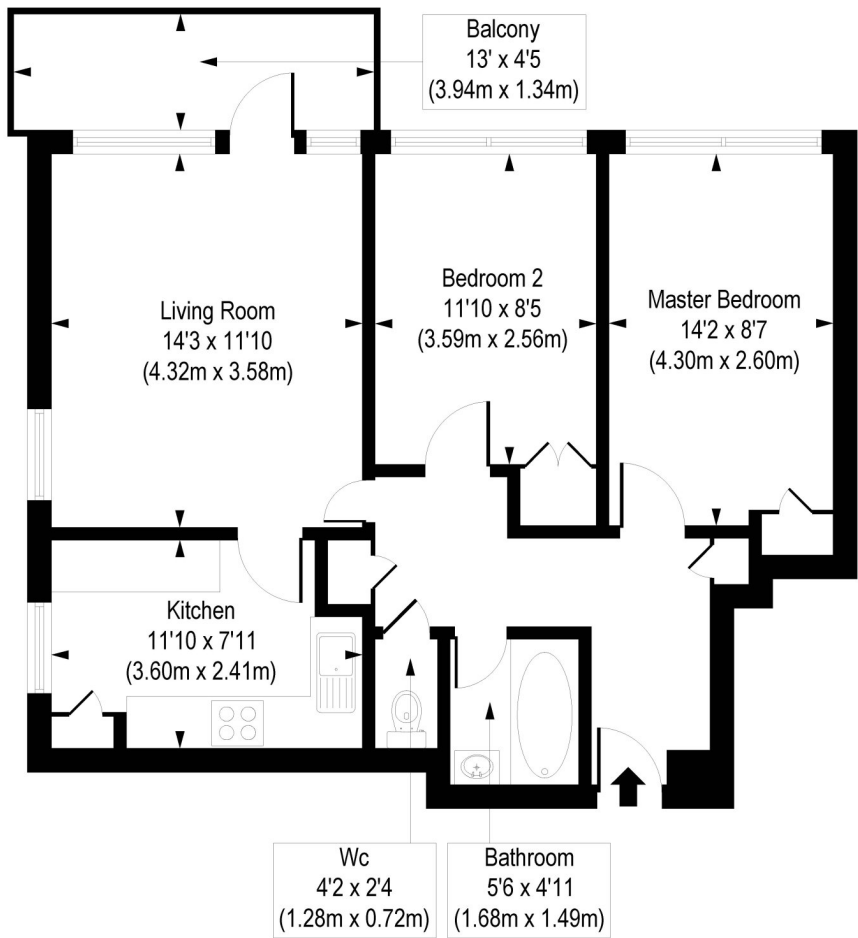
Pauline House is moments from Whitechapel Station (Crossrail) offering fantastic access to Canary Wharf and the City as well as being a short distance to Aldgate and Aldgate East stations. There is a wealth of local amenities in Whitechapel including Whitechapel High Street, Commercial Road, Brick Lane and Shoreditch.

Winkworth



Winkworth

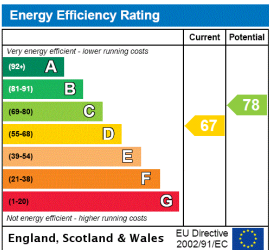
Pauline House, Old Montague Street, E1
 Approx. Gross Internal Floor Area 651 sq. ft / 60.52 sq. m



Thirteenth Floor

COMPLIANT WITH RICS CODE OF MEASURING PRACTICE. Floorplan is for illustrative purposes only and is not to scale. Every attempt has been made to ensure the accuracy of the floorplan shown, however all measurements, fixtures, fittings and data shown are an approximate interpretation for illustrative purposes only. Liability for errors, omissions or mis-statement through negligence or otherwise is hereby excluded.

This floorplan is for illustration purposes only and is not to scale. The position and size of doors, windows, appliances and other features are approximate.



Shoreditch | 020 7749 7650 | shoreditch@winkworth.co.uk



winkworth.co.uk

See things differently

Winkworth wishes to inform prospective buyers and tenants that these particulars are a guide and act as information only. All our details are given in good faith and believed to be correct at the time of printing but they don't form part of an offer or contract. No Winkworth employee has authority to make or give any representation or warranty in relation to this property. All fixtures and fittings, whether fitted or not are deemed removable by the vendor unless stated otherwise and room sizes are measured between internal wall surfaces, including furnishings.