



PARK STREET, BA1
£750,000 SHARE OF FREEHOLD

Winkworth



PARK STREET, BA1

A beautifully presented maisonette with private street level entrance and a charming walled garden.

Ground Floor | Private Entrance | Hallway | Reception Room | Bedroom 2 | Garden Floor | Bedroom | Bathroom | Kitchen Dining Room | Cellar (potential wine cellar) | Front Courtyard and Vaults | Rear Courtyard and Walled Garden. Residents parking for 2 cars, visitors parking available. Share of freehold.

An elegant maisonette in an impressive Georgian townhouse. The front door leads directly into the apartments private hallway from the street.

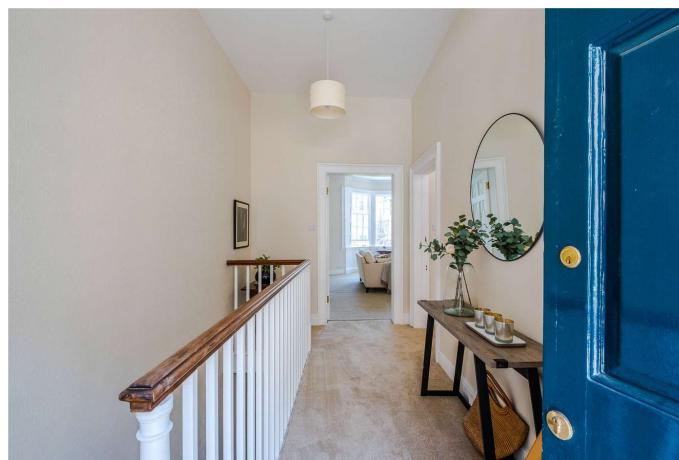
The apartment has the period features you would expect of a Georgian house, high ceilings with decorative corning, sash windows and shutter.

The reception room is spacious with a gorgeous bay window overlooking the garden.

On the garden level is a master bedroom, bathroom and the kitchen breakfast room which leads directly into the garden.

The courtyard garden has a seating area surrounded by established shrubs and flowers. Perfect for alfresco dining.

Park Street leads off St James's Square, arguable Baths most impressive Georgian squares with a large wrought iron fenced green in the middle.

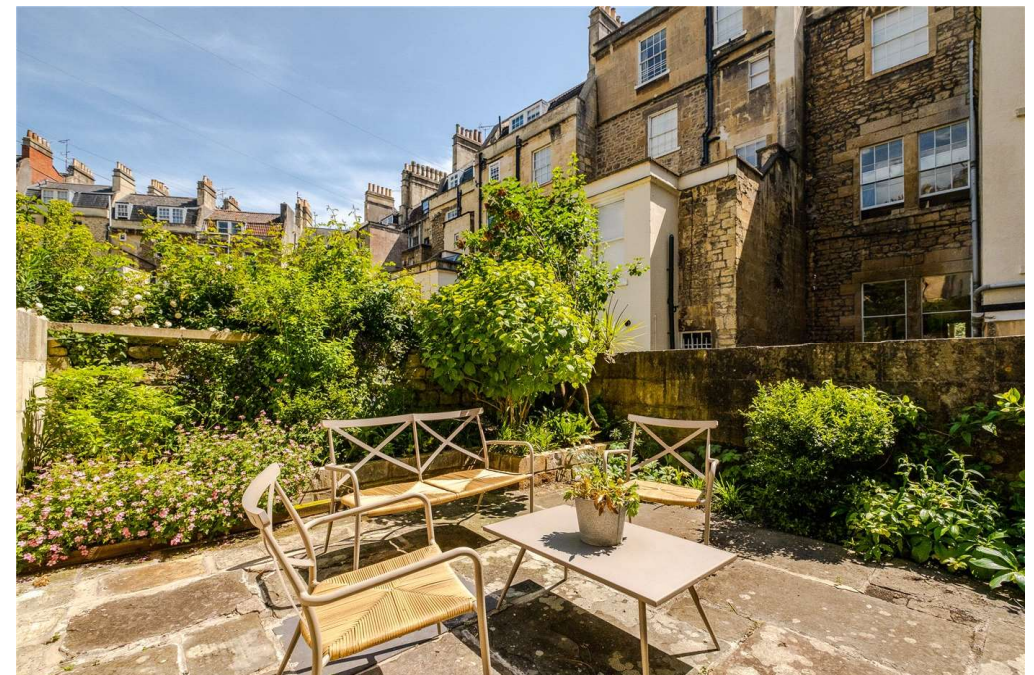


There are amenities including St James Wine Vaults, coffee shop and deli, pharmacy, florist, greengrocer and convenience store.

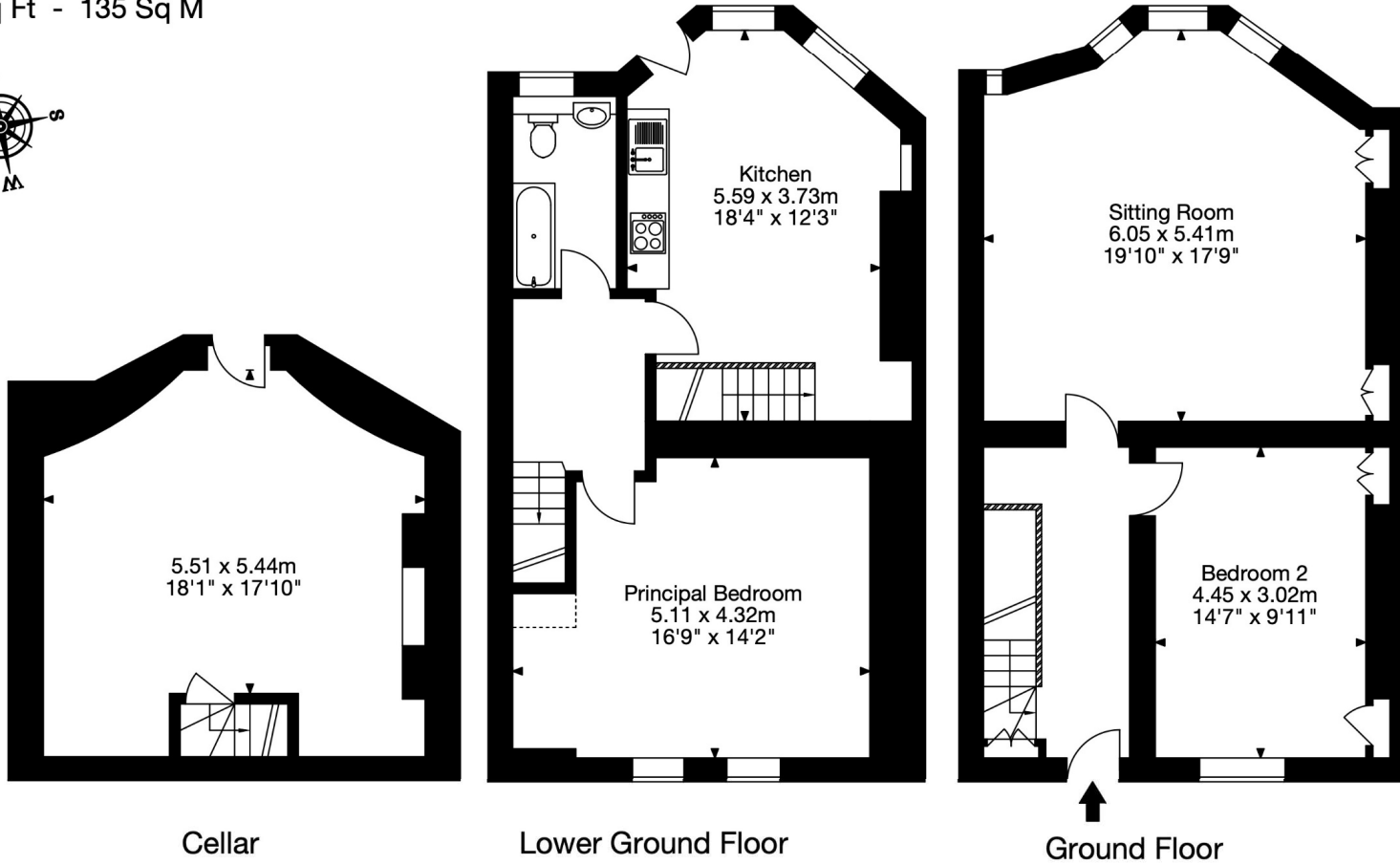
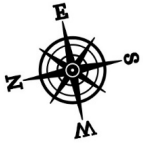
The property is approximately 100 meters north of the Royal Crescent and an easy stroll into the city centre.

TENURE

Share of freehold



39 Park Street,
Bath BA1 2TD
Approx. Gross Internal Area
1471 Sq Ft - 135 Sq M



Capture Property Marketing 2021. Drawn to RICS guidelines.
All Measurements are approximate and should not be relied on as a statement of fact.
Plan is for illustration purposes only. Not drawn to scale.

Capture.

Bath | 01225 829 000 | bath@winkworth.co.uk

winkworth.co.uk

Winkworth wishes to inform prospective buyers and tenants that these particulars are a guide and act as information only. All our details are given in good faith and believed to be correct at the time of printing but they don't form part of an offer or contract. No Winkworth employee has authority to make or give any representation or warranty in relation to this property. All fixtures and fittings, whether fitted or not are deemed removable by the vendor unless stated otherwise and room sizes are measured between internal wall surfaces, including furnishings.

