



Dawson Place, W2

£625 per week (£2,708.33 PCM) *Partfurnished*



A STUNNING TWO BEDROOM, TWO BATHROOM FLAT WITH WONDERFUL LIGHT ON THE THIRD FLOOR OF THIS PERIOD BUILDING.



Notting Hill Lettings

0207 727 3227 | nottinghill@winkworth.co.uk

Winkworth

for every step...



A stunning two-bedroom, two bathroom flat with wonderful light on the third floor of this period building located in one of the area's most sought after locations. The flat benefits from two double bedrooms with built in storage, two bathrooms (one en suite), south facing living room with wood floors and a separate fully fitted kitchen. Available furnished and working professionals only please.

Dawson Place is one of Notting Hill's finest roads - a residential street of imposing stucco fronted villas running west from Pembridge Villas, well placed between and short walk from the amenities of Notting Hill Gate and the boutiques and restaurants of Westbourne Grove.

Utilities:

Electricity – Mains

Water – Mains

Sewerage – Mains

Heating – Gas

Broadband <https://checker.ofcom.org.uk/en-gb/broadband-coverage>

Mobile Coverage <https://checker.ofcom.org.uk/en-gb/mobile-coverage>

MATERIAL INFO

Deposit: £3,125

Holding Deposit: £625

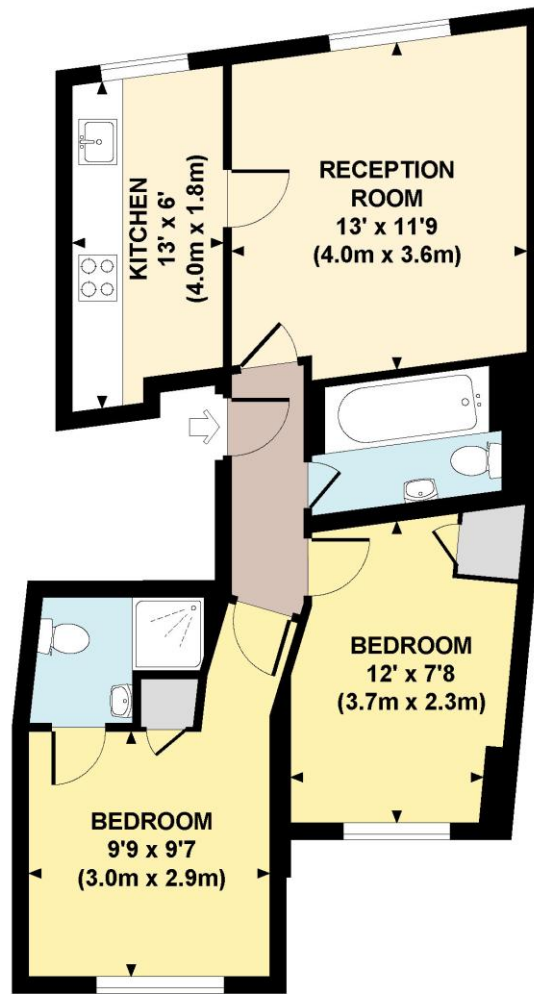
Council Tax Band: E (Westminster)





DAWSON PLACE, W2

Approx. gross internal area
564 Sq Ft. / 52 Sq M.



THIRD FLOOR



All measurements are approximate and for illustration purposes only as defined by the BCS Code of Measuring Practice © 2012 Dowling Jones Design www.dowlingjones.com 020 7610 9933

For more information, scan the QR code or visit the link below



<https://www.winkworth.co.uk/rent/property/NHL140013>

Energy Efficiency Rating		
	Current	Potential
Very energy efficient - lower running costs		
(92+) A		
(81-91) B		
(69-80) C		
(55-68) D	74	76
(39-54) E		
(21-38) F		
(1-20) G		
Not energy efficient - higher running costs		
England, Scotland & Wales	EU Directive 2002/91/EC	

Where no figures are shown, we have been unable to ascertain the information. All figures that are shown were correct at the time of printing.

Notting Hill Lettings

0207 727 3227 | nottinghill@winkworth.co.uk

Winkworth

for every step...

Winkworth wishes to inform prospective buyers and tenants that these particulars are a guide and act as information only. All our details are given in good faith and believed to be correct at the time of printing but they don't form part of an offer or contract. No Winkworth employee has authority to make or give any representation or warranty in relation to this property. All fixtures and fittings, whether fitted or not are deemed removable by the vendor unless stated otherwise and room sizes are measured between internal wall surfaces, including furnishings.