



FAIRHOLME ROAD, W14 £475,000 SHARE OF FREEHOLD

A fantastic opportunity to acquire this split level, two bedroom, first floor flat with a balcony, in need of modernisation, located in the heart of Barons Court.

Fulham & Parsons Green | 020 7731 3388 | fulham@winkworth.co.uk

Winkworth

for every step...

winkworth.co.uk



DESCRIPTION:

The property has the advantage of being sold with a long lease and no onward chain. It is ideally located under five minutes walk from both West Kensington and Barons Court tube station. Spanning nearly 525 sq. ft of lateral space the flat comprises a kitchen with access to the West facing balcony. This is located next to the living room to the front of the property. The two equal sized bedrooms are served by a bathroom.

Fairholme Road is located in the heart of the West Kensington/Barons Court Grid and is perfectly positioned within immediate proximity of West Kensington tube station and the wide array of local amenities and shops found across North End Road. The prestigious Queens Club is a short walk away as well as several well favoured local pubs. The Piccadilly line can be found at Barons Court linking the property again to central London and Heathrow airport.





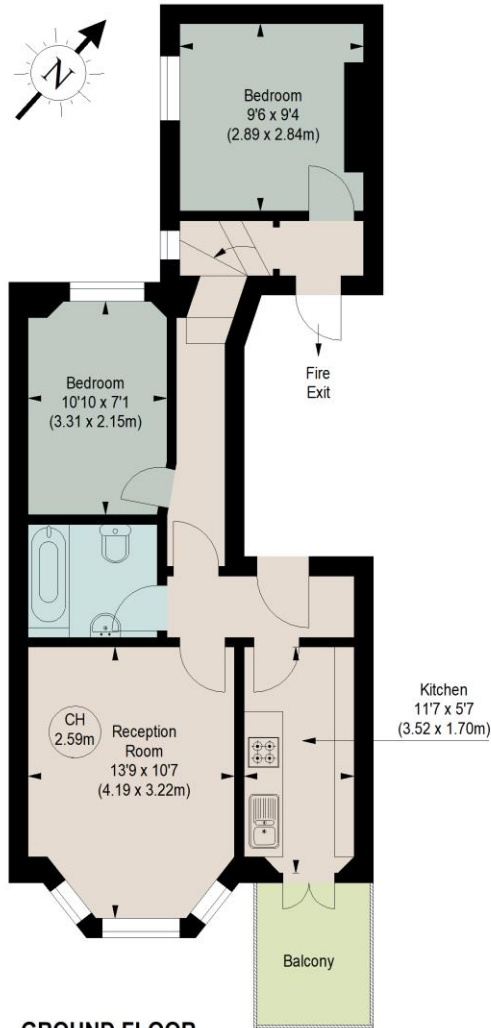
FAIRHOLME ROAD, W14

Approximate gross internal area

524 sq ft / 48.68 sq m

Key :

CH - Ceiling Height



GROUND FLOOR

The floor plan is not to scale and measurements and areas shown are approximate and therefore should be used for illustrative purposes only. The plan has been prepared in accordance with the RICS code of Measuring Practice and whilst we have confidence in the information produced, it must not be relied on. If there is any aspect of particular importance, you should carry out or commission your own inspection of the property.

This floorplan is for illustration purposes only and is not to scale. The position and size of doors, windows, appliances and other features are approximate.

Tenure: Share of Freehold
Term: Expires -
Service Charge: £0 per annum
Ground Rent: £ 0 Annually (subject to increase)
Council Tax Band:

Where no figures are shown, we have been unable to ascertain the information. All figures that are shown were correct at the time of printing.

Fulham & Parsons Green | 020 7731 3388 | fulham@winkworth.co.uk

Winkworth

for every step...

winkworth.co.uk

Winkworth wishes to inform prospective buyers and tenants that these particulars are a guide and act as information only. All our details are given in good faith and believed to be correct at the time of printing but they don't form part of an offer or contract. No Winkworth employee has authority to make or give any representation or warranty in relation to this property. All fixtures and fittings, whether fitted or not are deemed removable by the vendor unless stated otherwise and room sizes are measured between internal wall surfaces, including furnishings.