



146 Victoria Road
Ferndown BH22 9JD
Guide Price £450,000

Winkworth



GUIDE PRICE £450,000
FREEHOLD

Formerly the working Dairy of Ferndown this now wonderful three bedroom detached house is full of character features and benefits from an incredibly convenient location, a stones throw from the amenities along Ferndown high street.

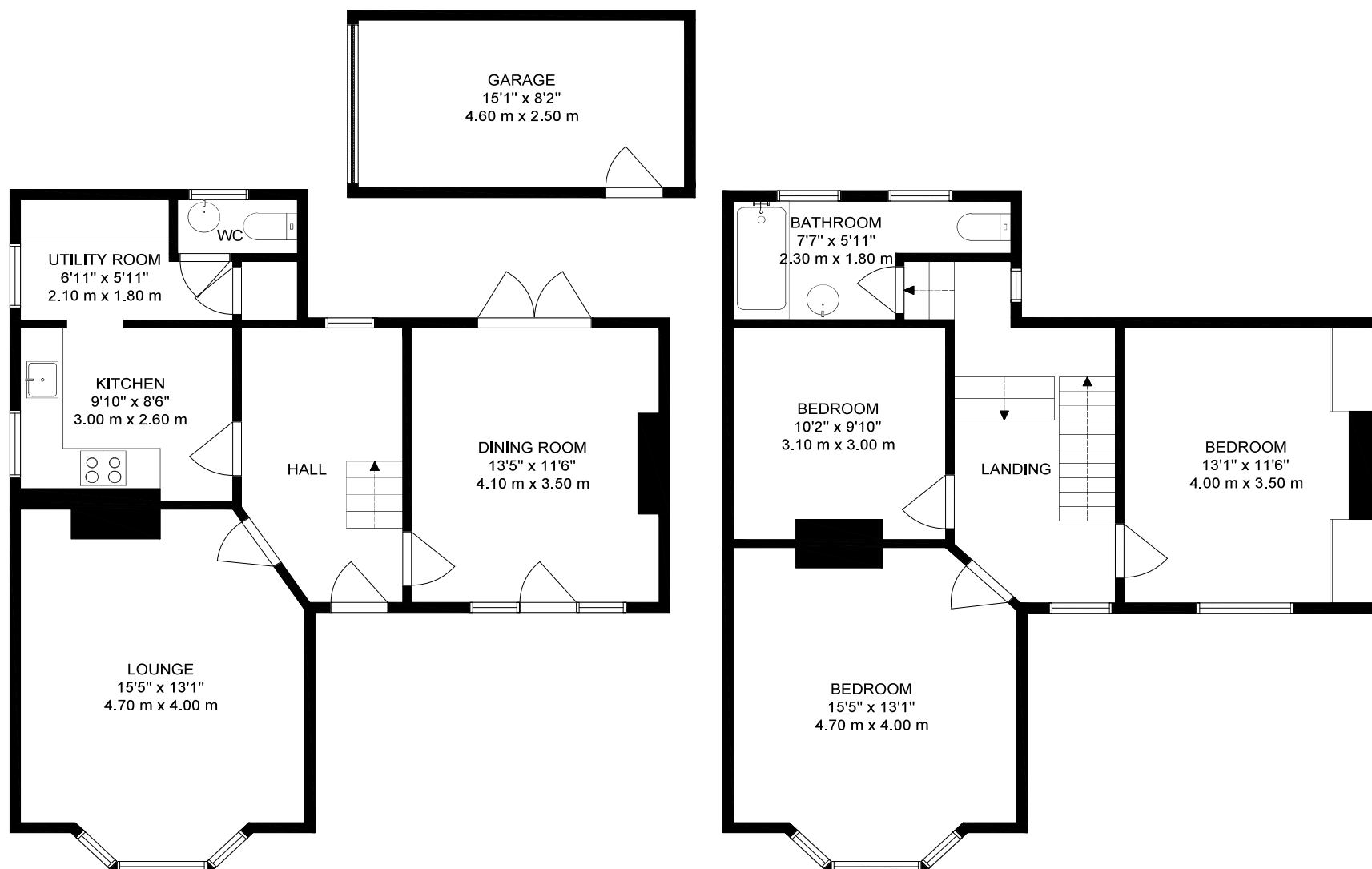
Detached Character House
Full Of Original Features
Immaculate Throughout
Detached Garage
Off Road Parking
Two Reception Rooms
Three Double Bedrooms
Downstairs Cloakroom
Stones Throw From High Street

EPC D | Council Tax Band E

01202 434365
ferndown@winkworth.co.uk







GROSS INTERNAL AREA
GROUND FLOOR: 624 SQ FT, 58 m2, FIRST FLOOR: 639 SQ FT, 59 m2
GARAGE: 118 SQ FT, 11 m2
TOTAL: 1381 SQ FT, 128 m2
SIZE AND DIMENSIONS ARE APPROXIMATE, ACTUAL MAY VARY



LOCATION

Less than a five minute walk from Ferndown town centre, which has a range of shops, cafes and amenities including an M&S Food hall and Ferndown championship golf course. There are bus routes within a short walk giving you easy access to Bournemouth, Poole & Wimborne all of which have an excellent range of shops, bars, restaurants and leisure facilities. Award winning sandy beaches are just twenty minutes away in Bournemouth and the nearby A31 provides quick access to the New Forest, Southampton and London.

Winkworth Ferndown

406 Ringwood Road, Ferndown, Dorset, BH22 9AU

01202 434365 | ferndown@winkworth.co.uk

winkworth.co.uk/ferndown

Winkworth