



WESTBOURNE TERRACE, BAYSWATER, W2
£1,100,000 SHARE OF FREEHOLD

**WITH CLOSE PROXIMITY TO HYDE PARK, SITUATED ON
AND CONSIDERED ONE OF THE FINEST WIDE TREE-LINED
AVENUE'S IN LONDON.**

Paddington | 020 7467 5770 | paddington@winkworth.co.uk

Winkworth

for every step...

winkworth.co.uk



DESCRIPTION:

A beautifully presented, stylish and light two-bedroom, two bathroom garden apartment. Offering own private entrance, walk in wardrobe and parking. Set within an attractive Grade II stucco fronted period building. Westbourne Terrace is a most attractive tree lined Street running north from Hyde Park, with Paddington Station (Heathrow Express and the 'new' Elizabeth Line), Lancaster Gate (central line) and The A40 close at hand.



Winkworth

for every step...



Winkworth

for every step...

Westbourne Terrace

Approximate Gross Internal Area = 85.3 sq m / 918 sq ft
Vaults = 22.1 sq m / 238 sq ft
Total = 107.4 sq m / 1156 sq ft

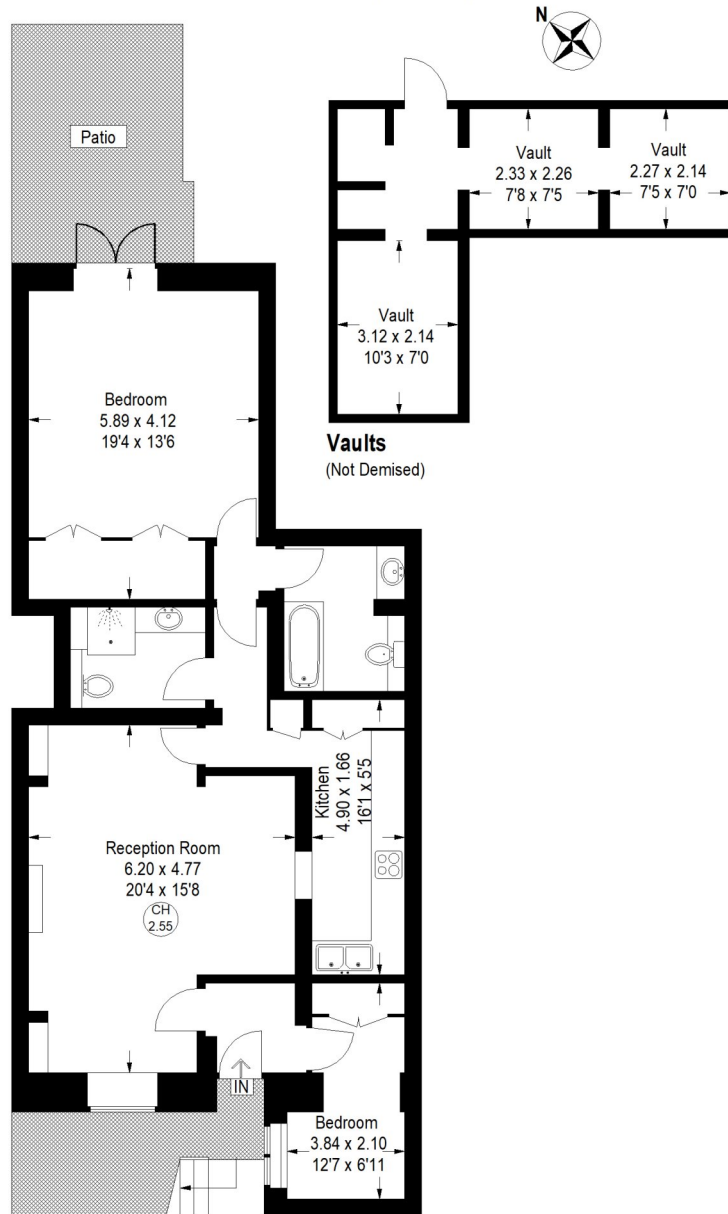


Illustration for identification purposes only, measurements are approximate, not to scale.
FloorplansUsketch.com © 2022 (ID 858048)

This floorplan is for illustration purposes only and is not to scale. The position and size of doors, windows, appliances and other features are approximate.

Paddington | 020 7467 5770 | paddington@winkworth.co.uk

Winkworth

for every step...

winkworth.co.uk

Winkworth wishes to inform prospective buyers and tenants that these particulars are a guide and act as information only. All our details are given in good faith and believed to be correct at the time of printing but they don't form part of an offer or contract. No Winkworth employee has authority to make or give any representation or warranty in relation to this property. All fixtures and fittings, whether fitted or not are deemed removable by the vendor unless stated otherwise and room sizes are measured between internal wall surfaces, including furnishings.