



HIGHBURY PARK, LONDON, N5
£450,000 LEASEHOLD

A STUNNING, TWO DOUBLE BEDROOM,
SECOND PERIOD CONVERSION IN THE HEART
OF HIGHBURY, N5.

Highbury | 0207 989 7000 | highbury@winkworth.co.uk

Winkworth

winkworth.co.uk

See things differently



DESCRIPTION:

A bright, two double bedroom, second floor apartment positioned moments from the tube and all the local amenities Highbury, N5 has to offer. Standing at 486 sqft, the property offers very well-proportioned rooms, the open plan living room/kitchen featuring two large, west facing windows allowing for an abundance of natural light to pour through. Both bedrooms, situated at either end of the property are doubles, both with treetops views and ample space for storage. The property is completed with a modern family bathroom and a long lease.

Highbury Park is set moments from the famous green spaces of Clissold Park, Highbury Fields and the prestigious Highbury Barn. The property is seconds away from highly regarded local amenities such as Godfrey's butchers, La Fromagerie, Da Mario's delicatessen, Bournes fishmongers and Highbury Vintners, all of which are hugely popular with locals, as well as drawing those from further afield.

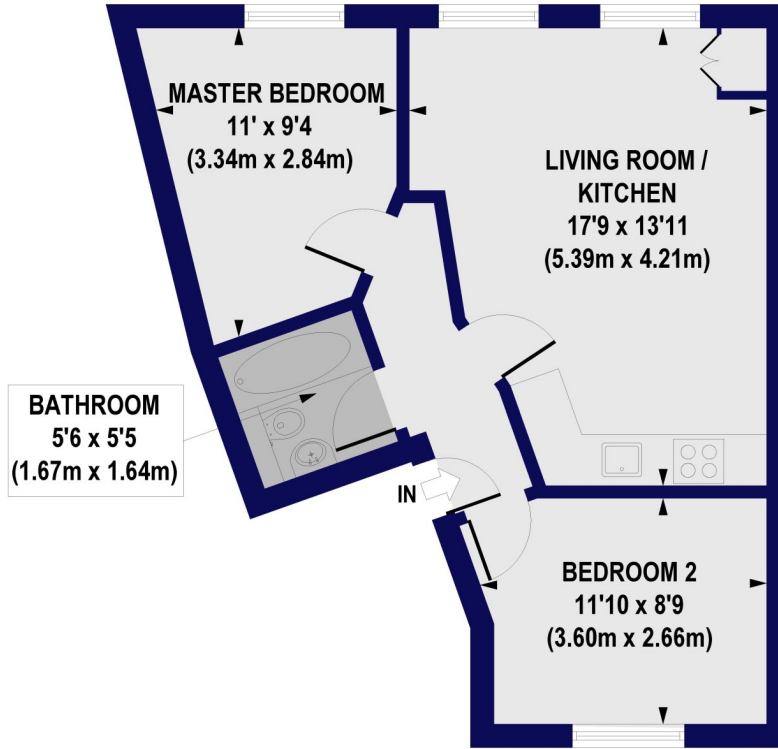
Excellent transport options include Highbury & Islington station (Victoria line & Overground) and Arsenal underground station (Piccadilly Line) along with excellent bus routes taking you into the City and West End.

Winkworth



Winkworth

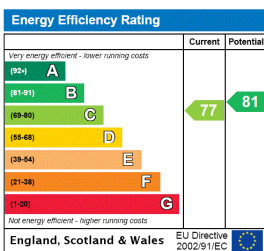
Highbury Park, N5
Approx. Gross Internal Floor Area 486 sq. ft / 45.18 sq. m



All measurements of walls, doors, windows, fittings and appliances, including their size and location, are shown as standard sizes and do not constitute any warranty or representation by the seller, their agent or CP Creative. Any intending purchaser must satisfy himself by inspection or otherwise as to the correctness of the information contained in these plans. This plan is for illustrative purposes only and should be used as such by any prospective purchasers.

Winkworth

This floorplan is for illustration purposes only and is not to scale. The position and size of doors, windows, appliances and other features are approximate.



Highbury | 0207 989 7000 | highbury@winkworth.co.uk



winkworth.co.uk

See things differently

Winkworth wishes to inform prospective buyers and tenants that these particulars are a guide and act as information only. All our details are given in good faith and believed to be correct at the time of printing but they don't form part of an offer or contract. No Winkworth employee has authority to make or give any representation or warranty in relation to this property. All fixtures and fittings, whether fitted or not are deemed removable by the vendor unless stated otherwise and room sizes are measured between internal wall surfaces, including furnishings.