

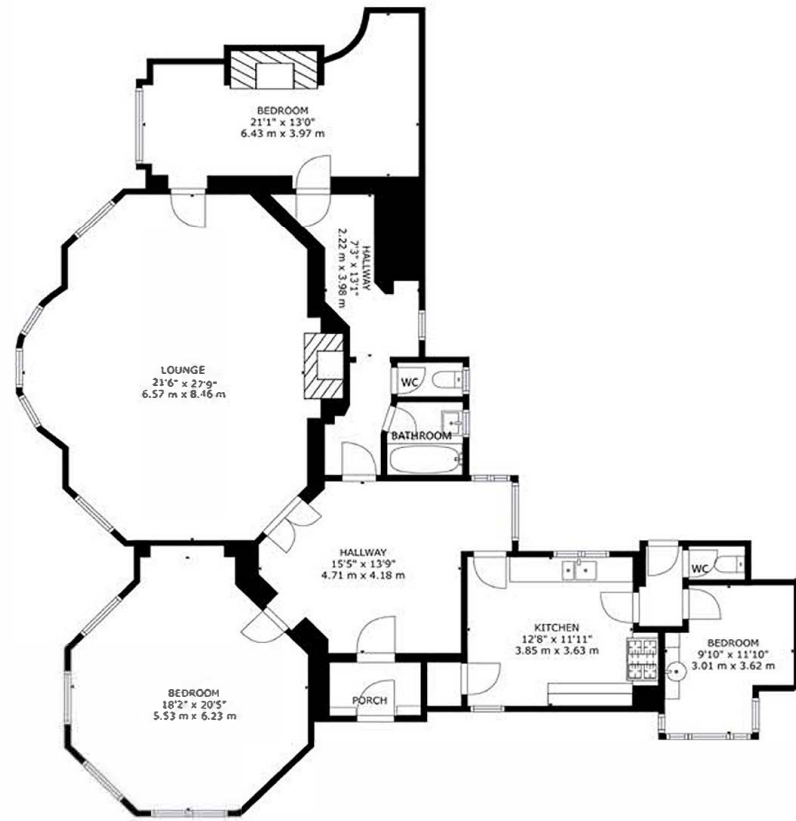


FLAT 2, MICHELGROVE HOUSE

BOSCOMBE SPA BH5 1JJ

GUIDE PRICE £450,000 - £475,000

Winkworth



GROSS INTERNAL AREA
 FLOOR 1: 1953 sq. ft. 181 m², EXCLUDED AREAS:
 PORCH: 35 sq. ft. 3 m²
 TOTAL: 1953 sq. ft. 181 m²

SIZE AND DIMENSIONS ARE APPROXIMATE. ACTUAL MAY VARY.

FLOOR 1





GUIDE PRICE - £450,000 - £475,000

01202 434365 | southbourne@winkworth.co.uk

Built in 1899, Michelgrove House has been converted into a range of self contained apartments. Flat two is a large ground floor apartment with high ceilings and a range of traditional period features throughout, including a stunning stained glass ceiling in the lounge which is a sight to behold. On entering the property you are greeted by the grand entrance hall, which leads you off into the principle rooms. The largest bedroom is a unique octagonal room with four large windows and measures over 34 sqm. Bedroom two is a double room with a fitted vanity and washbasin and is adjacent to s separate WC. The third bedroom / study has doors leading to the garden area and a feature fireplace.

The incredibly spacious lounge / dining room not only features the ceiling but an array of other original aspects including a hand carved grand fireplace, wood flooring and wood paneling. The large kitchen has a range of units with a gas range oven and a pantry cupboard. A hallway leads off the kitchen to the main bathroom and separate w/c. Outside you will discover expansive communal grounds to enjoy as well as residents parking.

- **Two / Three Bedrooms**
- **Expansive Lounge**
- **Large Kitchen**
- **Communal Garden**
- **Stunning Architecture**
- **Residents Parking**

Leasehold | EPC: F | Council Tax: D | Pets not permitted | Holiday Lets - Permitted





Boscombe is the suburb of Bournemouth and is located to the south east and neighbours both Bournemouth and Southbourne. Boscombe High Street offers a varied shopping experience with a number of well known high street stores. The area benefits from a number of local attractions including the award-winning blue flag sandy beaches with a level walk promenade extending from Hengistbury Head through to Sandbanks.

A local bus service provides links to Bournemouth and Poole with a different shopping experience together with a number of restaurants and bars providing a vibrant nightlife. A local train station provides direct links to Southampton, Southampton Airport and London which is approximately 100 miles away. Bournemouth International airport (6 miles) offers a varied schedule of flights to a number of European destinations.

Winkworth Southbourne

29 Southbourne Grove, Bournemouth, Dorset, BH6 3QT

01202 434365 | southbourne@winkworth.co.uk

winkworth.co.uk/southbourne

Winkworth