



Gilbey Road, SW17

£500,000 *Leasehold*



A lovely two-bedroom ground floor flat set within a lovely period conversion with a private outdoors space and stylish interior.

KEY FEATURES

- Ground floor
- 2 large bedrooms
- Spacious and stylish interior
- Recently refurbished and re-decorated
- Private garden
- Ample storage options



Tooting

020 8767 5221 | tooting@winkworth.co.uk

Winkworth

for every step...



The property has been restored and updated by its current owners, comprising of two large double bedrooms, a generous family bathroom, a shaker-style kitchen with vinyl flooring and open plan reception room. The property benefits from its ample storage options and spacious interior, as well as a charming private garden, perfect for those wanting to host/entertain with easy maintenance.

Gilbey Road is conveniently located moments from an extensive range of shops, bars and restaurants in Tooting, with a further selection of amenities close by in Earlsfield. Tooting Broadway is the nearest underground station (Northern Line).





MATERIAL INFO

Tenure: Leasehold

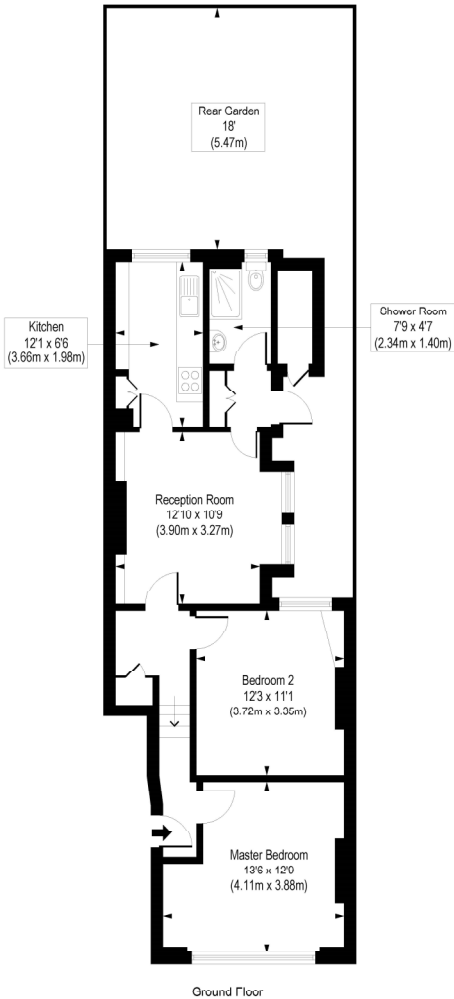
Term: 90 year and 9 months

Ground Rent: £ 60 Annually (subject to increase)

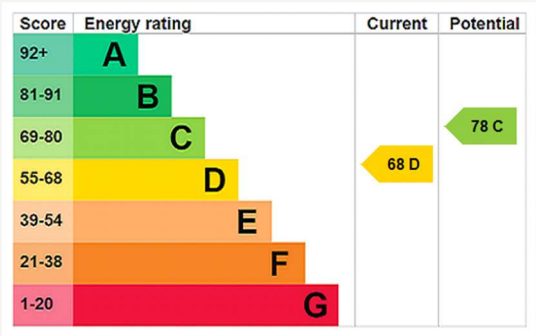
Council Tax Band:

EPC rating: D

Gilbey Road, SW17
Approx. Gross Internal Floor Area 670 sq. ft / 62.27 sq. m



COMPLIANT WITH THE CODE OF MEASURING PRACTICE: This plan is for illustrative purposes only and is not to scale. Every attempt has been made to ensure the accuracy of the floorplan shown, however all measurements, fixtures, fittings and data shown are an approximate interpretation for illustrative purposes only. Liability for errors, omissions or mis-statement through negligence or otherwise is hereby excluded.



Where no figures are shown, we have been unable to ascertain the information. All figures that are shown were correct at the time of printing.

Tooting
020 8767 5221 | tooting@winkworth.co.uk

Winkworth
for every step...

Winkworth wishes to inform prospective buyers and tenants that these particulars are a guide and act as information only. All our details are given in good faith and believed to be correct at the time of printing but they don't form part of an offer or contract. No Winkworth employee has authority to make or give any representation or warranty in relation to this property. All fixtures and fittings, whether fitted or not are deemed removable by the vendor unless stated otherwise and room sizes are measured between internal wall surfaces, including furnishings.