



NORFOLK ROAD, CANTERBURY  
**£1,300 PER MONTH UNFURNISHED**

**A stunning newly refurbished three bedroom house with a garden and off street parking.**

Canterbury | 01227 456 645 | [canterbury@winkworth.co.uk](mailto:canterbury@winkworth.co.uk)

Tenant Fees Apply: Details of fees for tenant referencing, tenancy agreement admin fees and renewal fees are available on the Winkworth website and the link can be found with the displayed rent for the property. Tenants should ensure they are fully conversant with these upfront fees and other costs that are involved at the outset of the tenancy before making an offer to rent and your local Winkworth office will provide written details upon request.

[winkworth.co.uk](http://winkworth.co.uk)

**Winkworth**

**for every step...**



## DESCRIPTION:

This three bedroom property has been refurbished to a high standard throughout.

On the ground floor is a stylish and spacious open plan kitchen with high quality integrated appliances. Bi-fold doors lead out to the spacious garden and benefits from an off street parking space at the rear of the garden. In addition there is a separate living area with an attractive bay window and a downstairs WC.

Upstairs, there are three bedrooms consisting of two double rooms and one single bedroom. The main bathroom is also brand new and benefits from a separate bath and shower.

The parking is accessed via the back of the property and through the double gates that are visible at the end of the garden.

It is available immediately on an unfurnished basis.

**Winkworth**

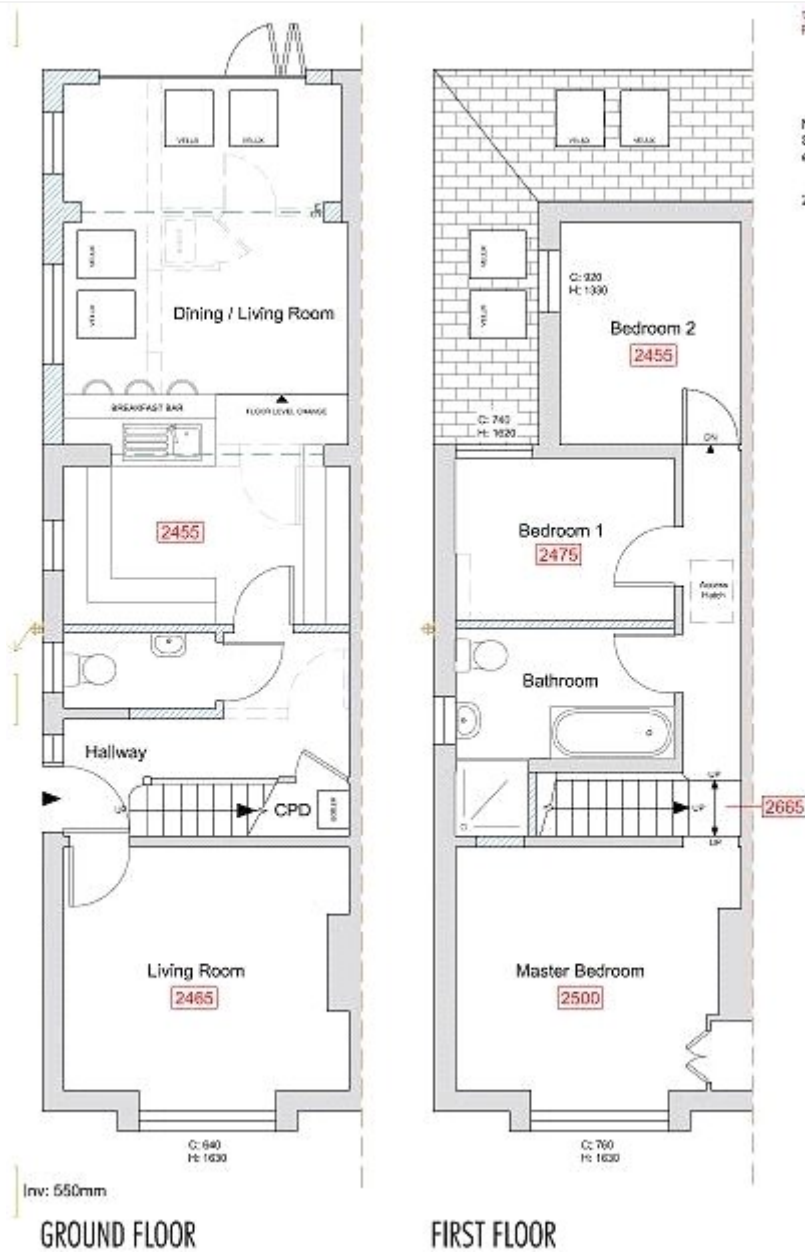
for every step...





**Winkworth**

for every step...



This floorplan is for illustration purposes only and is not to scale. The position and size of doors, windows, appliances and other features are approximate.

Canterbury | 01227 456 645 | canterbury@winkworth.co.uk

**Winkworth**

for every step...

[winkworth.co.uk](http://winkworth.co.uk)

Winkworth wishes to inform prospective buyers and tenants that these particulars are a guide and act as information only. All our details are given in good faith and believed to be correct at the time of printing but they don't form part of an offer or contract. No Winkworth employee has authority to make or give any representation or warranty in relation to this property. All fixtures and fittings, whether fitted or not are deemed removable by the vendor unless stated otherwise and room sizes are measured between internal wall surfaces, including furnishings.