



# Brook View

Farmborough | Bath



## A recently completed collection of 8 detached contemporary houses with impressive views over meadow land and finished to the highest standards.

Introducing Brook View, Farmborough. An exclusive and striking collection of eight 4 and 5 bedroom detached houses located in a well connected village close to the city of Bath.

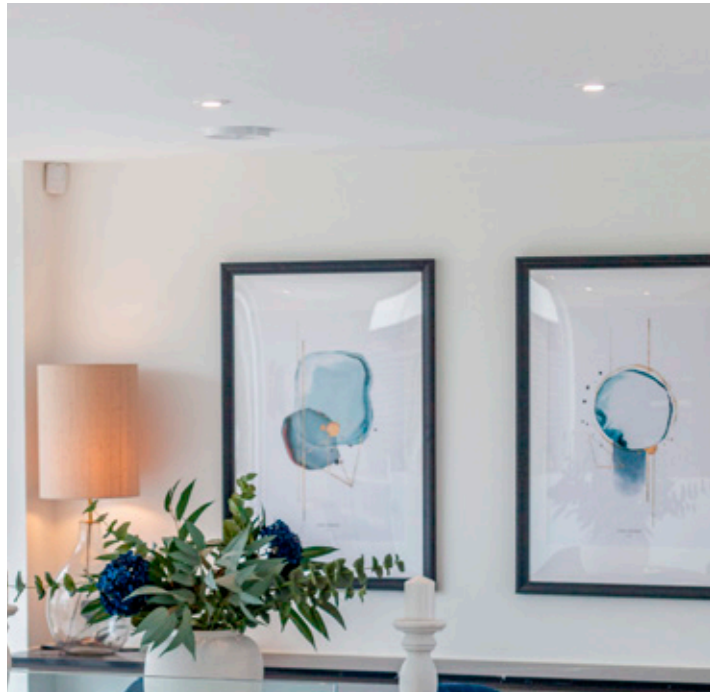
These design led homes have a modern open plan layout with heavily glazed elevations to make the most of the hillside position. Brook View offers a range of contemporary four bedroom homes ranging from 1900sqft to over 3000sqft all with an impressive considered specification and each with a double garage\*, off street parking and private landscaped garden.

### Location

Set amidst attractive surrounding countryside Farmborough is a village situated approximately 8 miles by road from Bath and has many amenities. A well served community store with café is the hub of the village with two pubs, and a popular farm shop is near by. Also close by is The Pig hotel, spa and restaurant in Hunstrete as well as the pretty village of Chew Magna and the beauty spot of Chew Valley Lake.

Bus services stop within the village and good road routes from here are available down to the M5 and up to the M4 via Bristol or Bath. The nearest railway stations are Keynsham which provides connections to Bristol, and Bath Spa which offers onward connections through to London Paddington (from 85 mins), the north and the west. The World Heritage City of Bath is renowned for its vast array of cultural, shopping, leisure and sporting facilities.





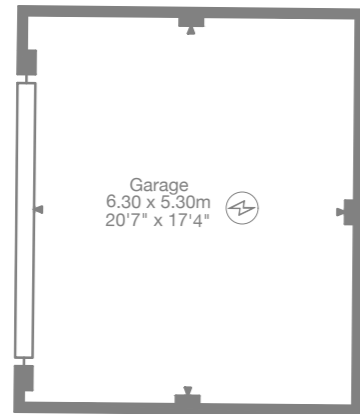
**House One**

Main House 3,069 sq ft (285 sq m)

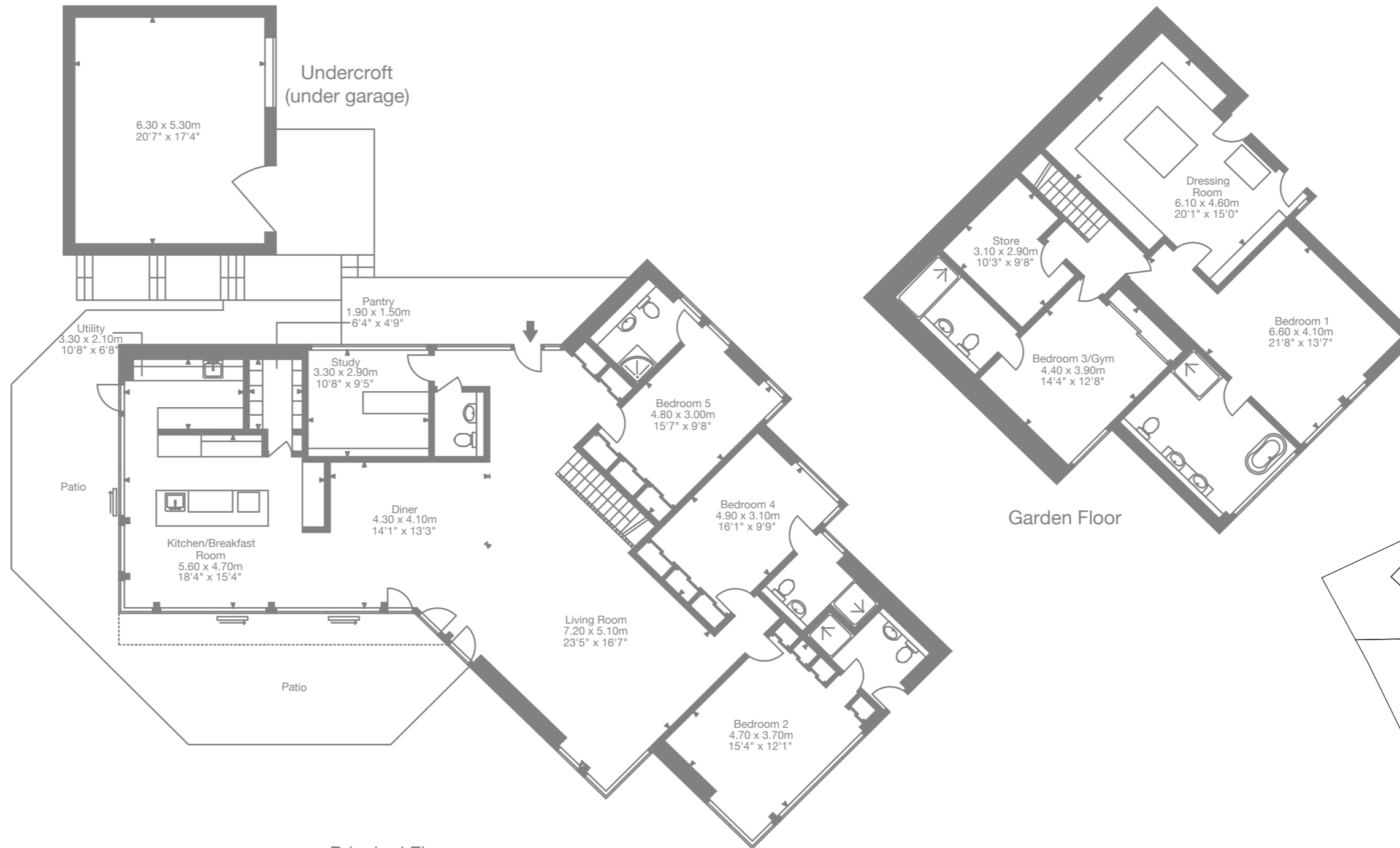
Undercroft 359 sq ft (33 sq m)

Garage 387 sq ft (36 sq m)

Total Area 3,815 sq ft (354 sq m)

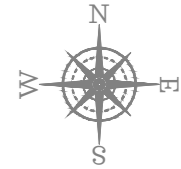


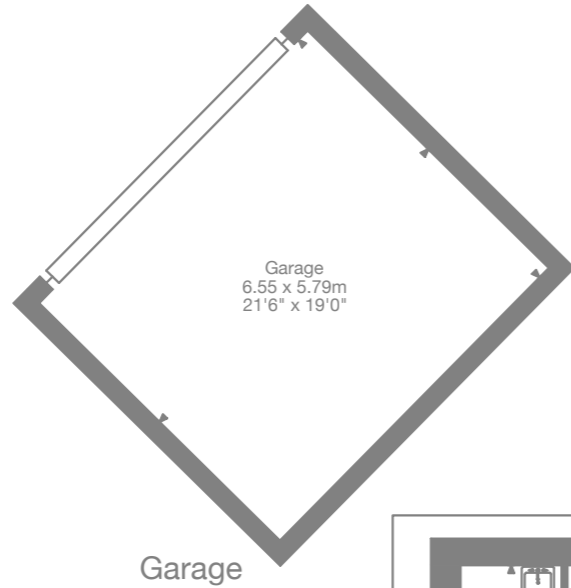
Garage



Principal Floor

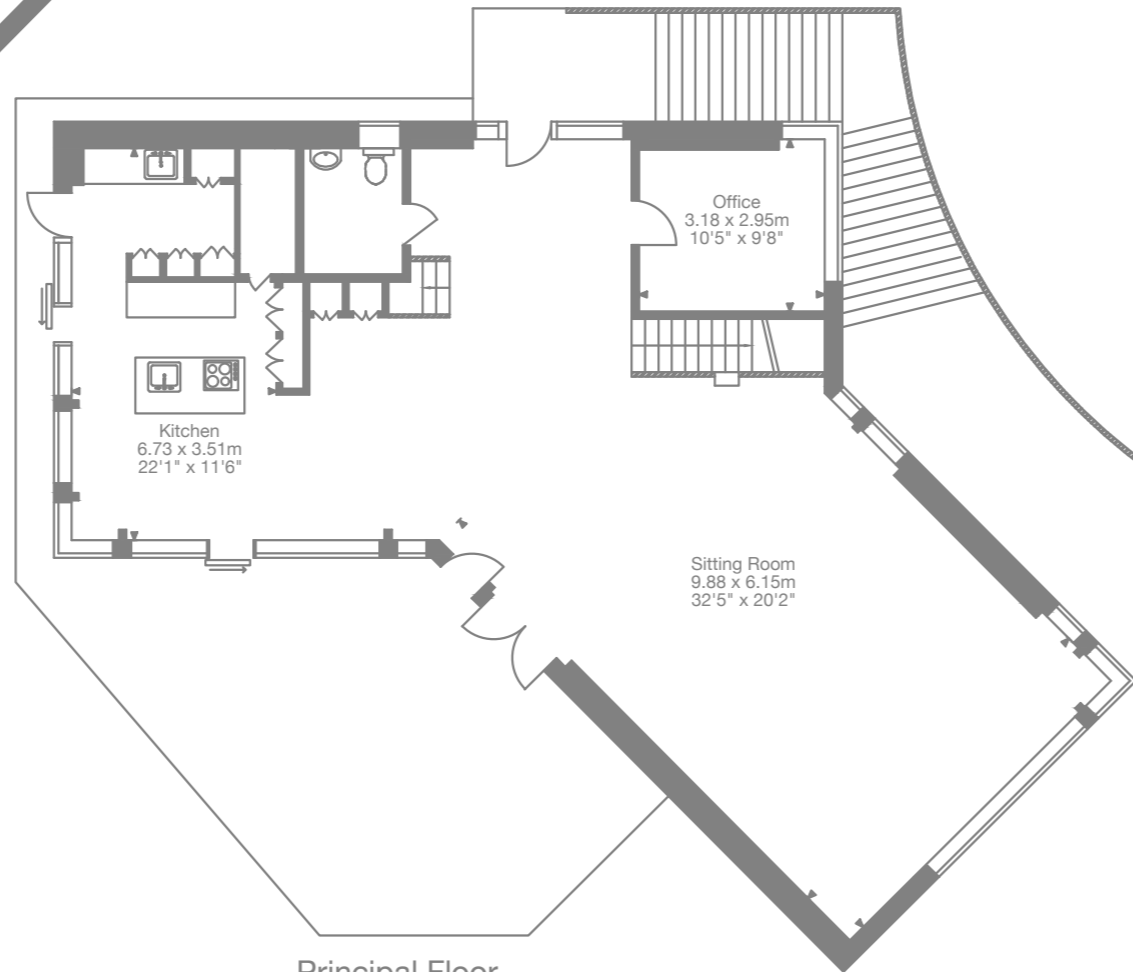
Garden Floor



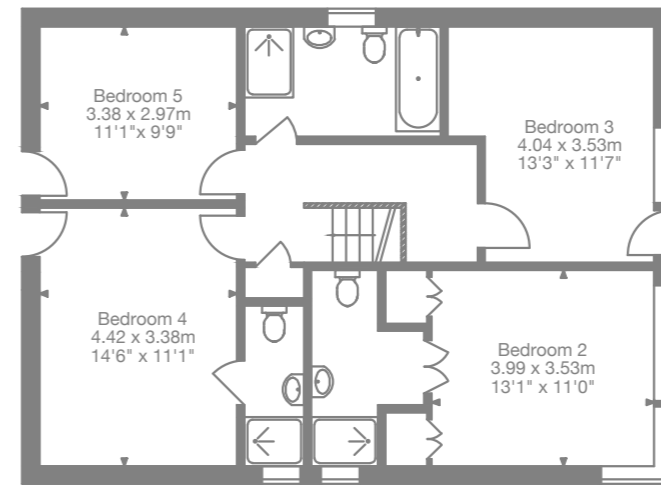


**House Two**  
Main House 2,872 sq ft (266 sq m)  
Garage 408 sq ft (37 sq m)  
Total Area 3,280 sq ft (229 sq m)

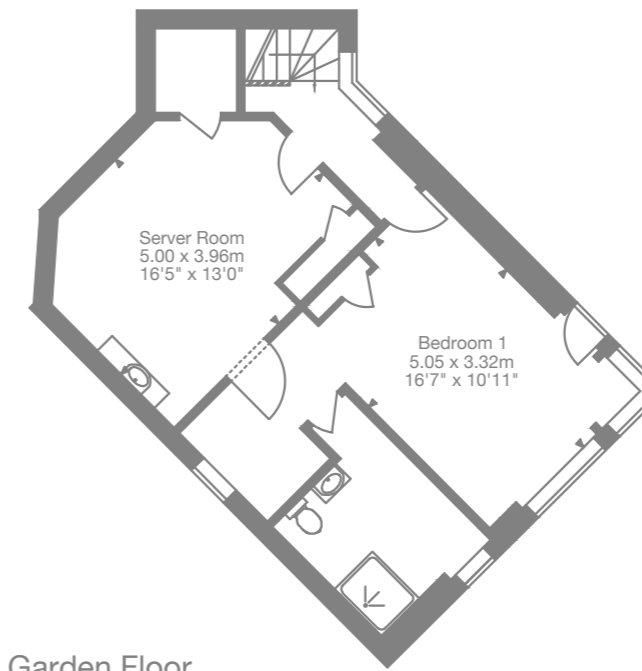
Garage



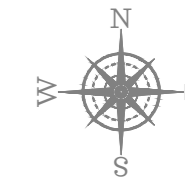
Principal Floor



First Floor



Garden Floor

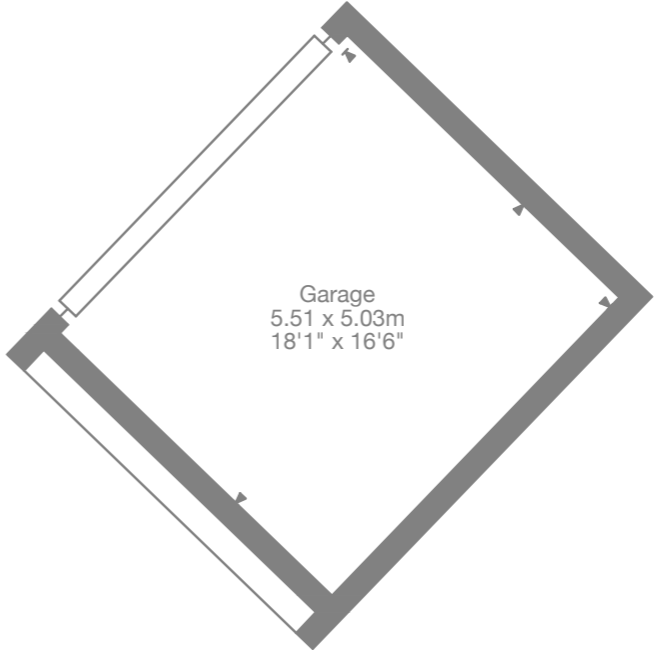
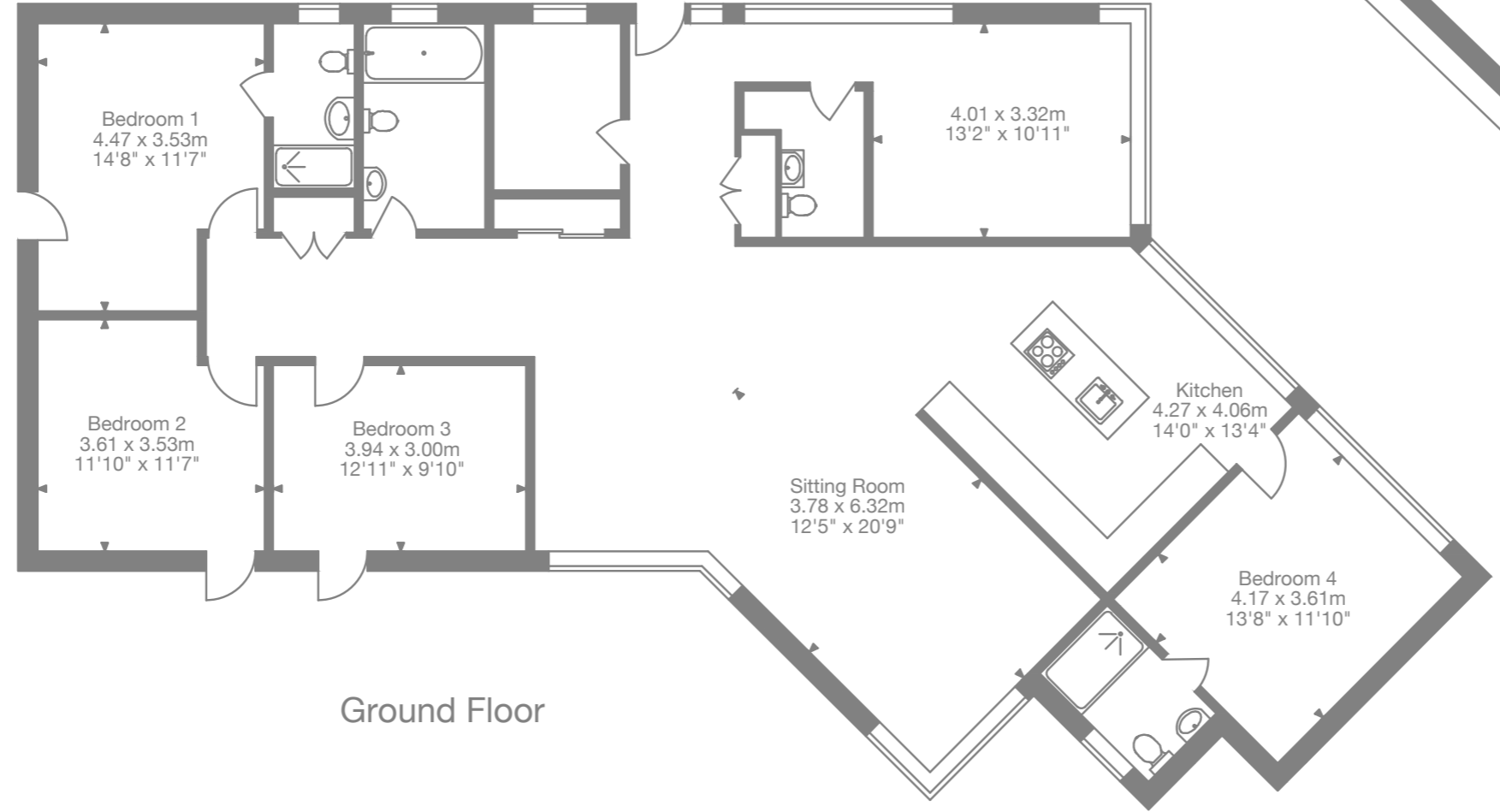


**House Three**

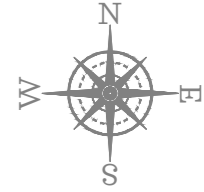
Main House 1,903 sq ft (176 sq m)

Garage 298 sq ft (27 sq m)

Total Area 2,201 sq ft (203 sq m)



Garage

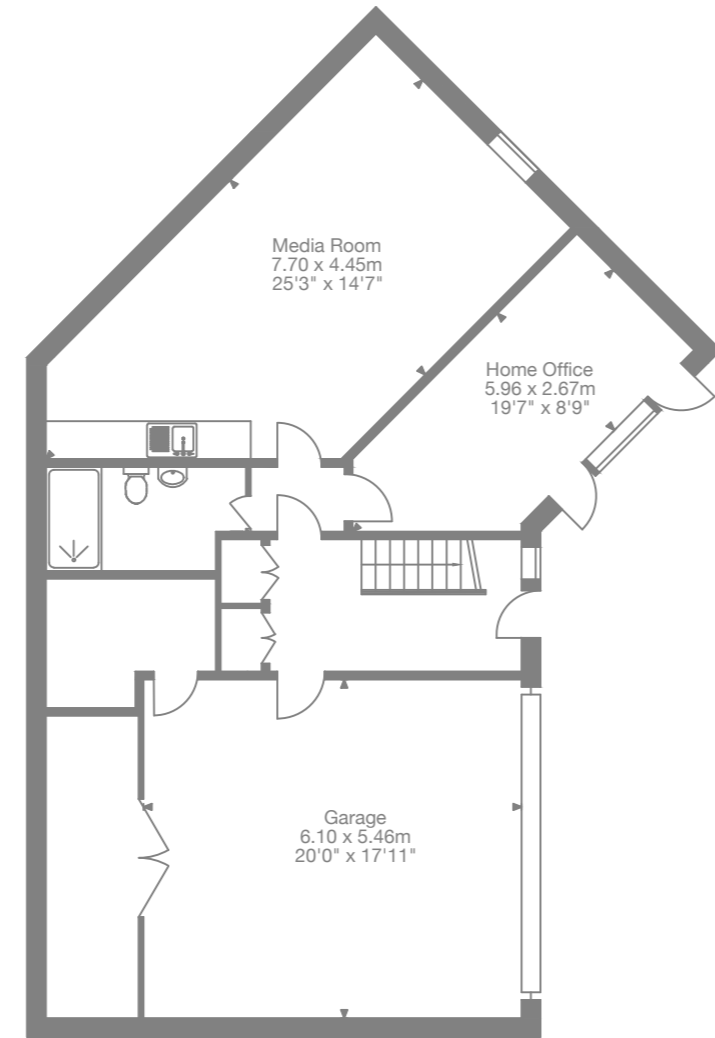


**House Four**

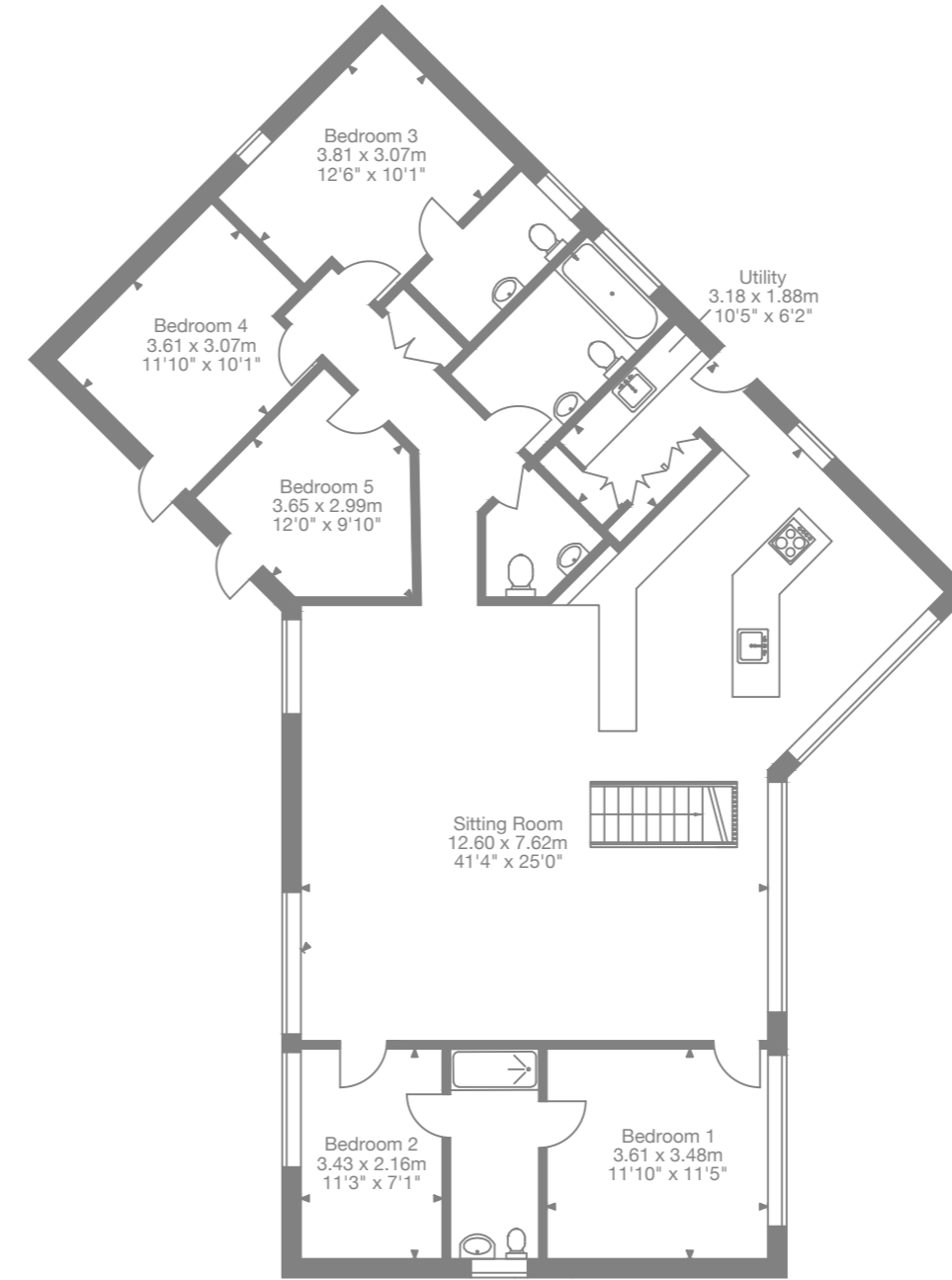
Main House 2,441 sq ft (226 sq m)

Garage 441 sq ft (40 sq m)

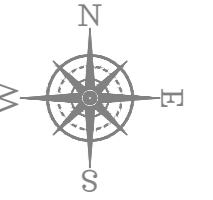
Total Area 2,882 sq ft (266 sq m)



Ground Floor



First Floor

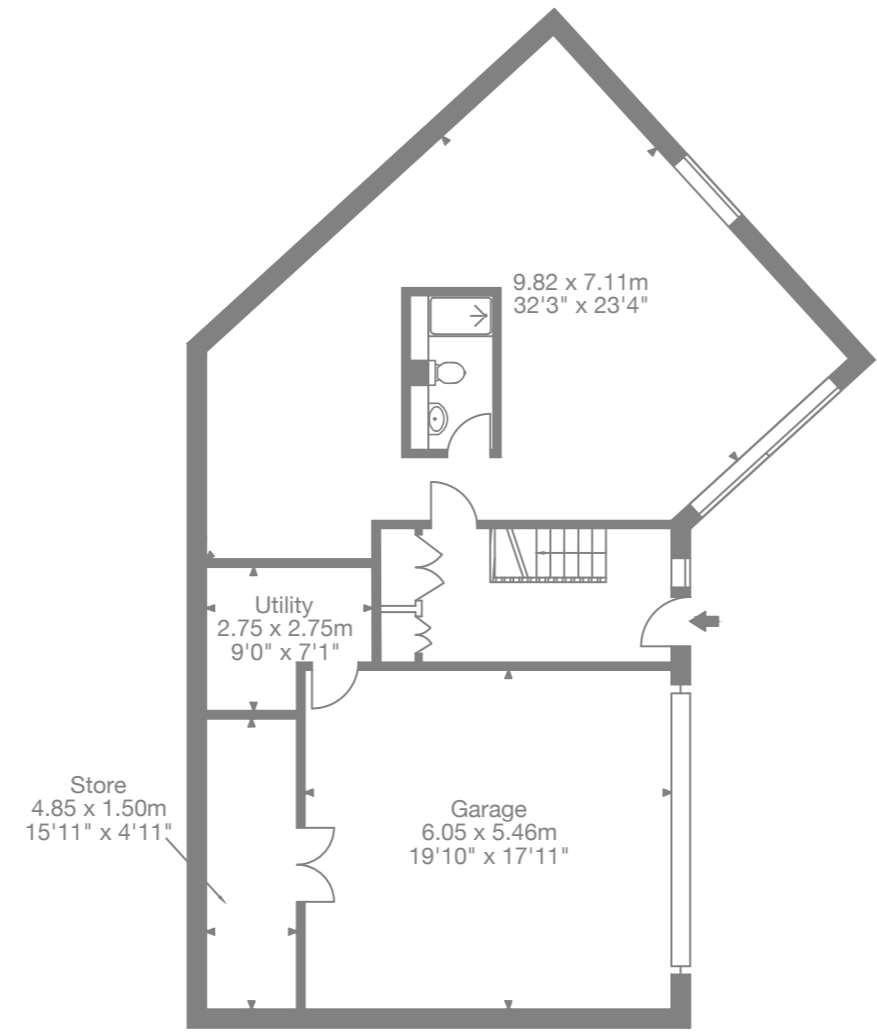


**House Five**

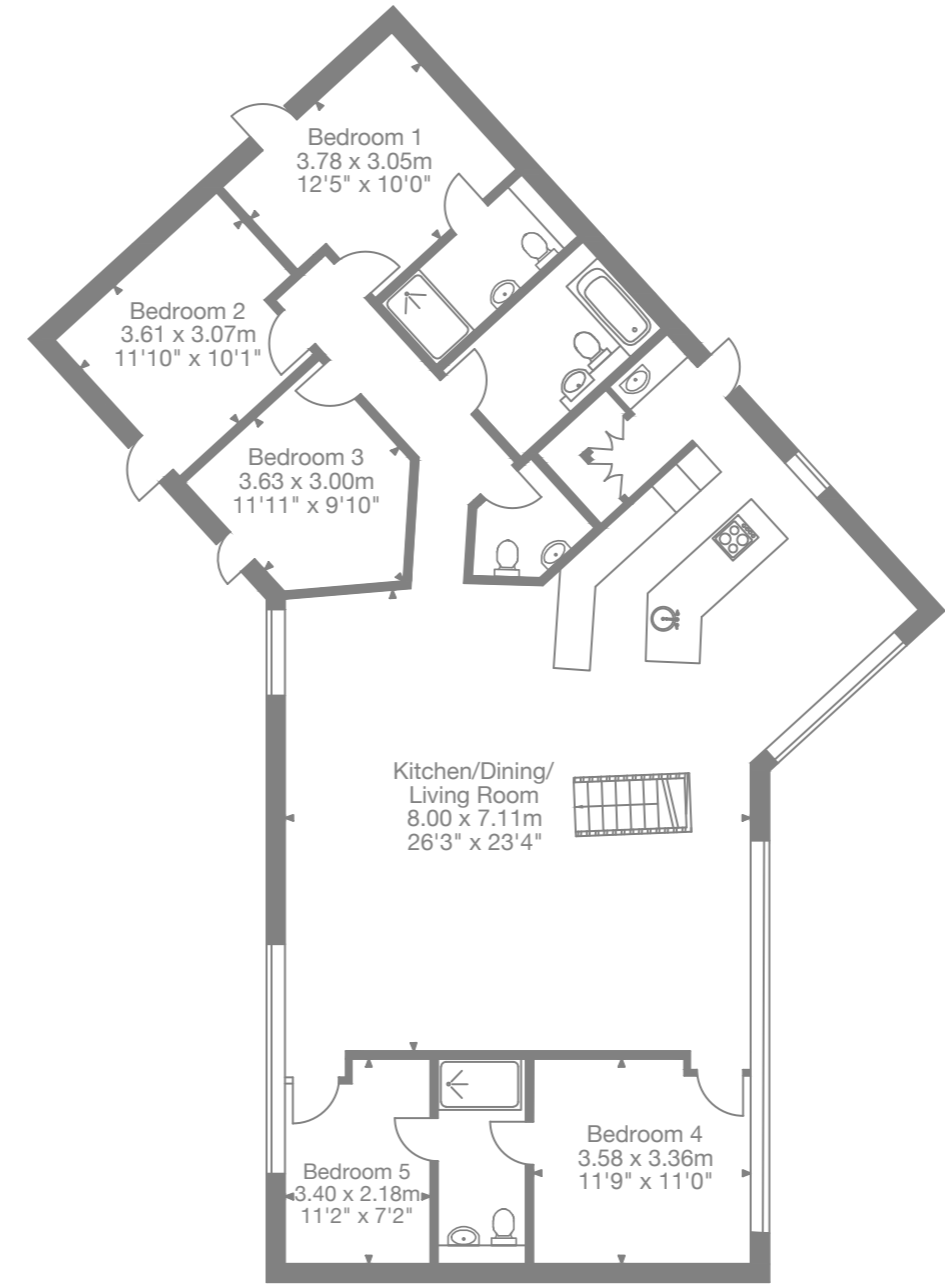
Main House 2,555 sq ft (237 sq m)

Garage 356 sq ft (33 sq m)

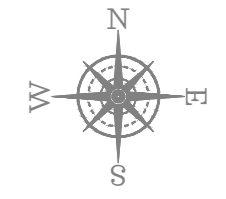
Total Area 2,911 sq ft (270 sq m)



Ground Floor



First Floor



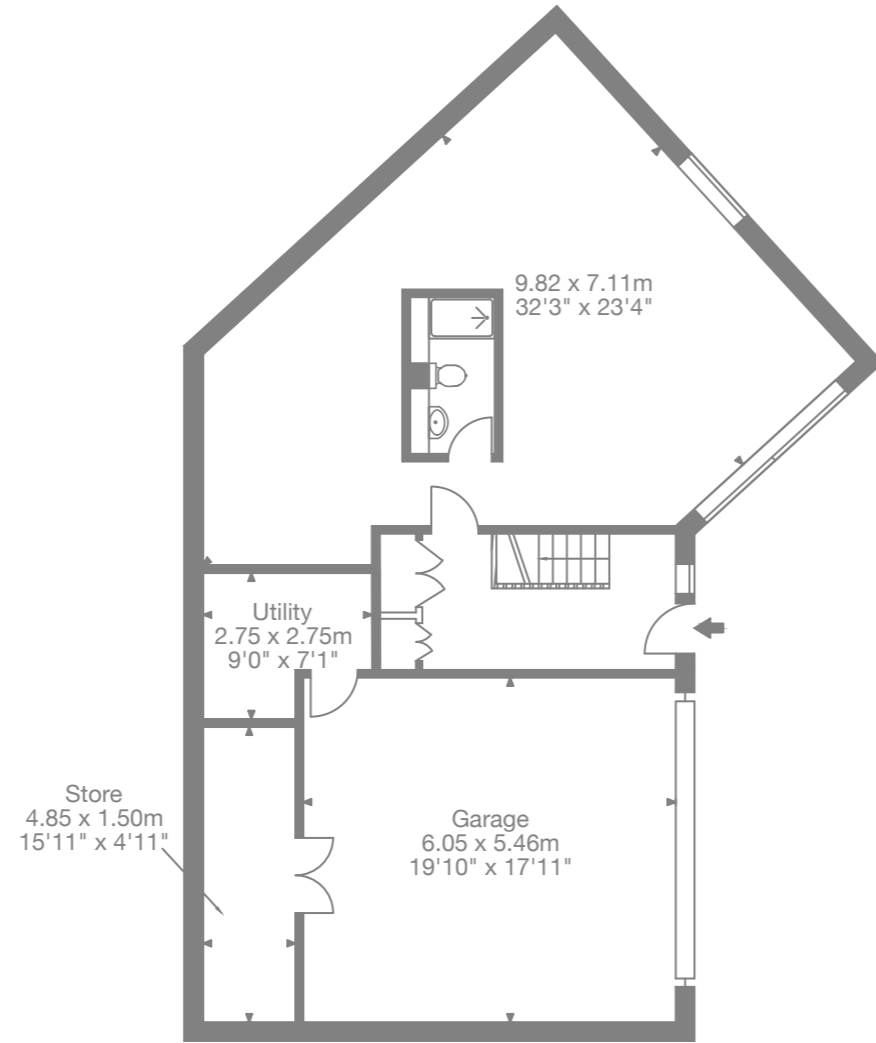


**House Six**

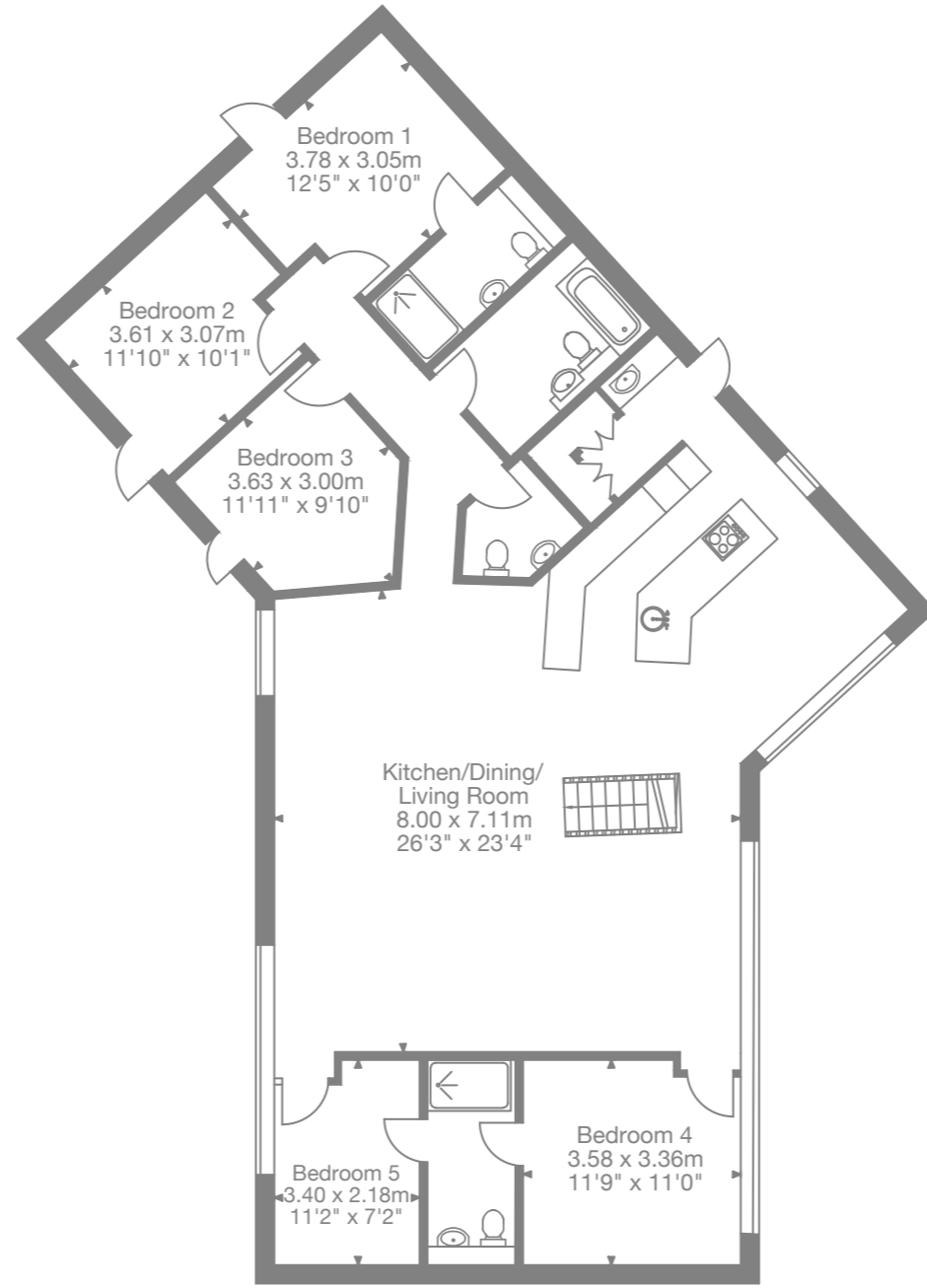
Main House 1,903 sq ft (176 sq m)

Garage 298 sq ft (27 sq m)

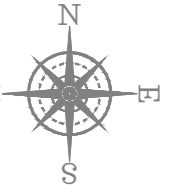
Total Area 2,201 sq ft (203 sq m)



Ground Floor



First Floor

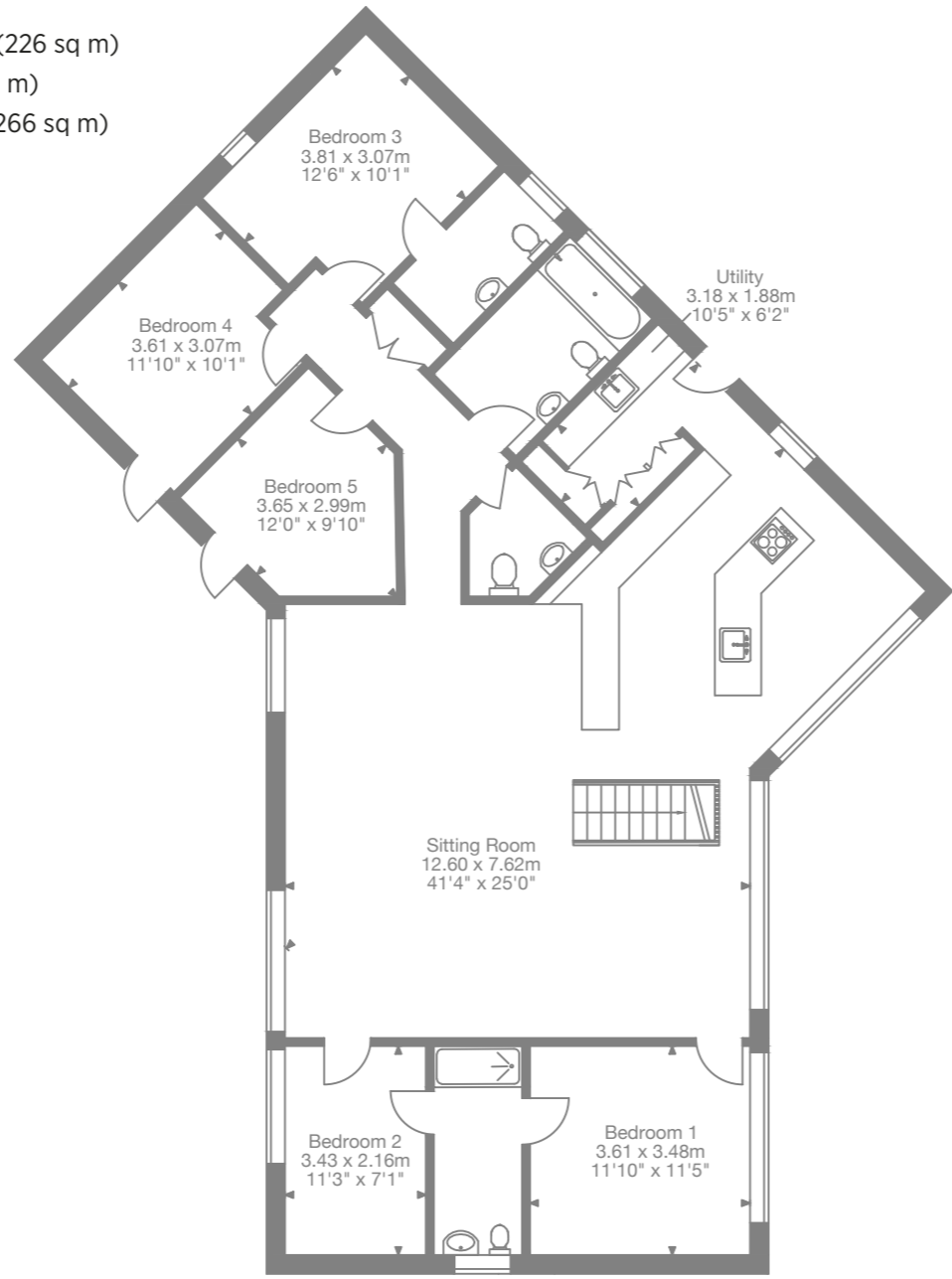


**House Seven**

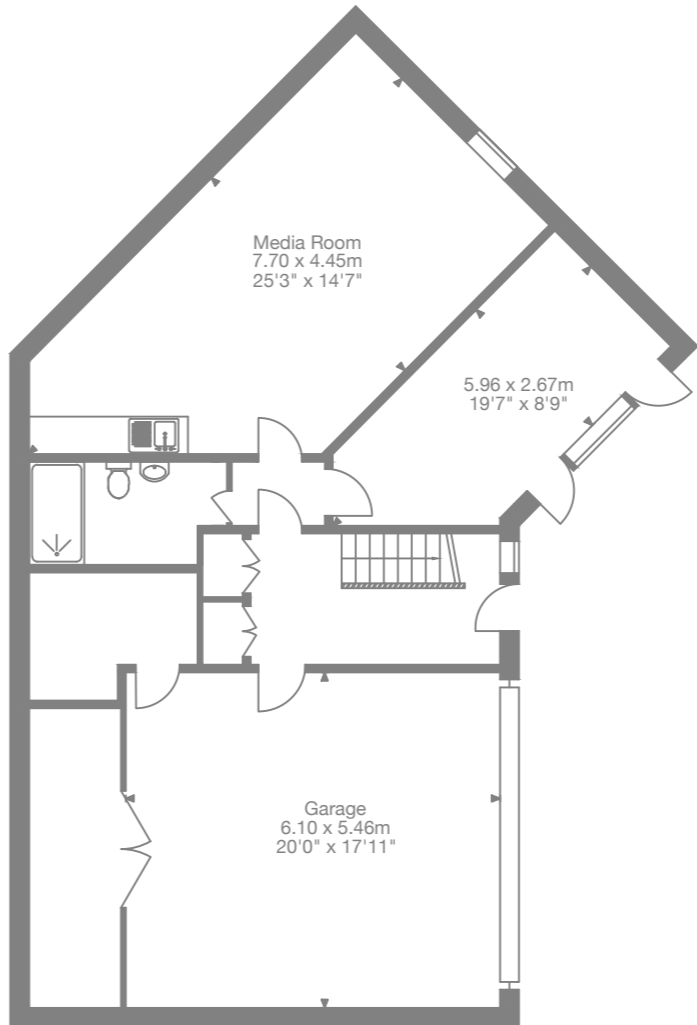
Main House 2,441 sq ft (226 sq m)

Garage 441 sq ft (40 sq m)

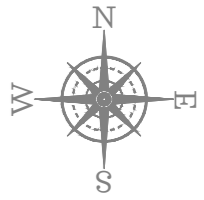
Total Area 2,882 sq ft (266 sq m)



Ground Floor



First Floor

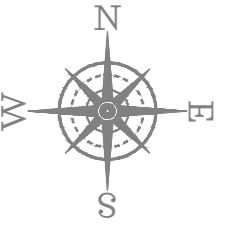
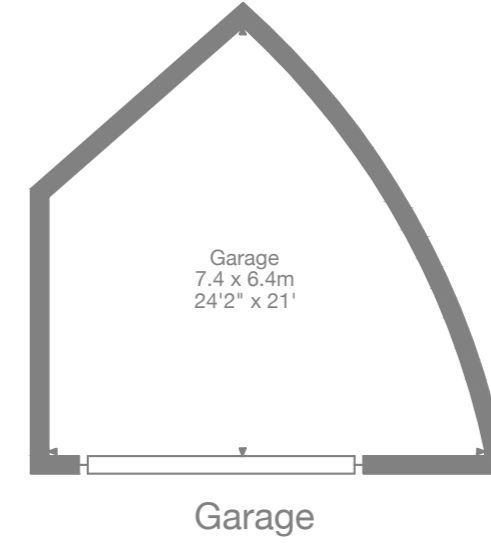
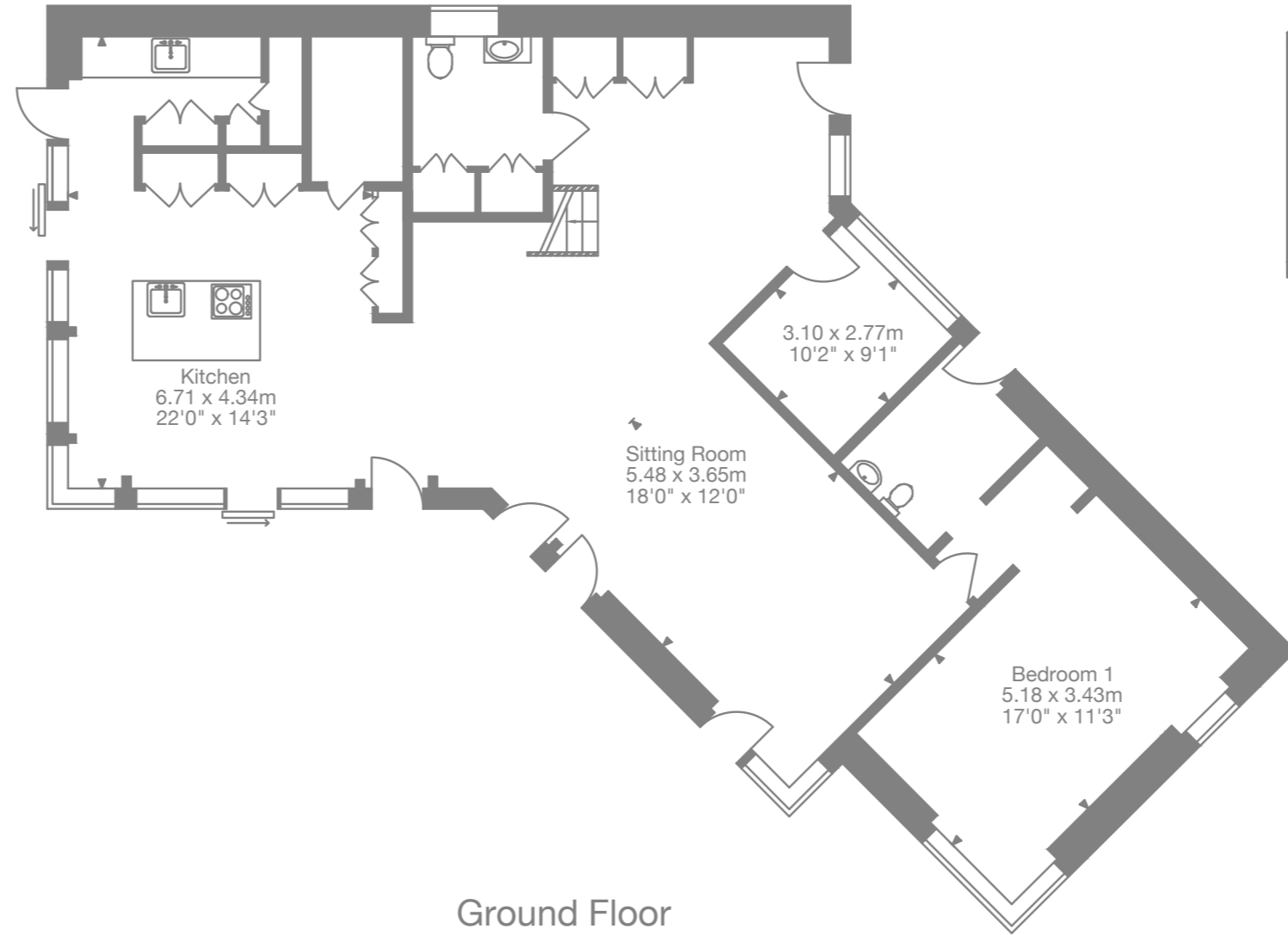
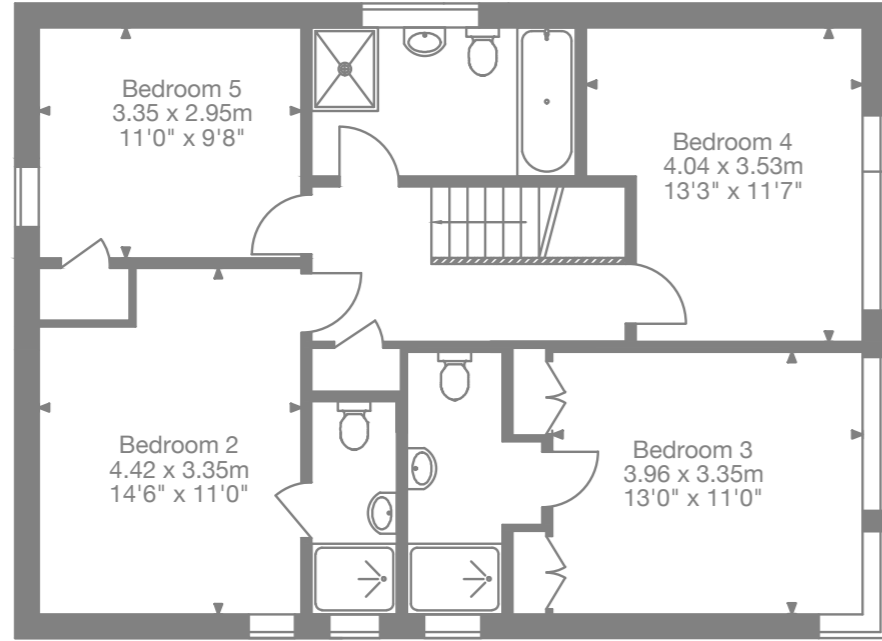


**House Eight**

Main House 2,158 sq ft (200 sq m)

Garage 418 sq ft (39 sq m)

Total Area 2,568 sq ft (238 sq m)



# Specification

## Kitchen

20mm Quartz Counter Top with undermount sink  
Luxurious fitted appliances from Neff, Bosch and Liebherr\*  
Quoker Instant Boiling Water Tap\*

## Bathroom

Clearwater Teardrop or Duravit Bathtubs\*  
High end fittings from Catalano, Vado and Dune  
Vado Zoo Waterfall Shower\*  
Tiled floors with underfloor heating and heated towel rail

## Sound, Vision & Connectivity

CAT6 pre wiring infrastructure (Smart System)  
Fitted security alarm\*  
Audio Installation\*  
Electric car charging points for all plots

## Flooring & Joinery

Large format porcelain tiles  
Thick pile carpeting to bedrooms and landing areas  
Wood flooring to living spaces  
Valchromat joinery\*  
Veneered timber door

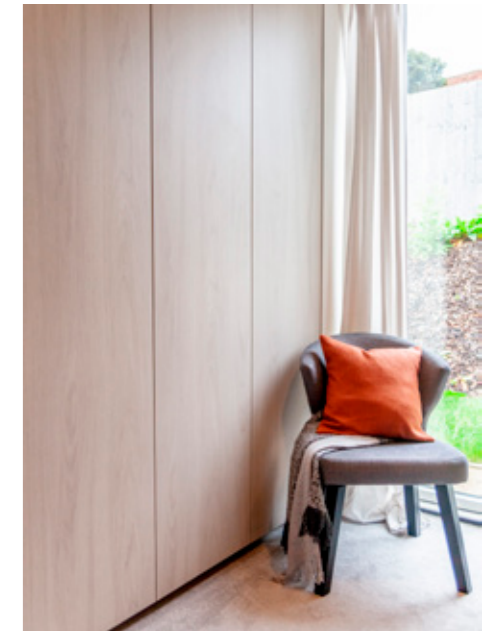
## Heating

Combination gas boiler  
Underfloor heating throughout  
Individual room thermostat controls

## Lighting

Low energy LED downlighters  
Up/Down accent lighting\*  
LED Strips\*

\*Plot specific – speak to your agent for further information



A rare opportunity to purchase one of eight freehold houses - each house will be sold with the benefit of a 1/8<sup>th</sup> ownership share of the management company which in turn owns both the communal and meadow land.

These areas will be maintained by way of a yearly maintenance charge.



**Winkworth**

13 Argyle Street  
Bath  
BA2 4BQ  
lmcilroy@winkworth.co.uk  
01225 829000

Edgar House  
17 George Street, Bath  
BA1 2EN  
hunter.harling@savills.com  
01225 474 591

**savills**

Brook View Bath Ltd, as developers, wish to inform prospective buyers and tenants that these particulars are a guide and act as information only. All our details are given in good faith and believed to be correct at the time of printing but they don't form part of an offer or contract. No Winkworth employee has authority to make or give any representation or warranty in relation to this property. All fixtures and fittings, whether fitted or not are deemed removable by the vendor unless stated otherwise and room sizes are measured between internal wall surfaces, including furnishings.