



WILMINGTON SQUARE, LONDON, WC1X
£1,450,000 SHARE OF FREEHOLD

Winkworth



WILMINGTON SQUARE, WC1X

A delightful three bedroom ground and lower maisonette on the picturesque Wilmington Square.

The property has the added benefit and sole use of a decked south facing garden and also comes with a share of the freehold.

Wilmington Square is located just off Rosebery Avenue. It is ideally located for Exmouth Market and Amwell Street. Farringdon Station, Kings Cross and Angel are all close by. Equally it is within easy walking distance of both the City and The West End.

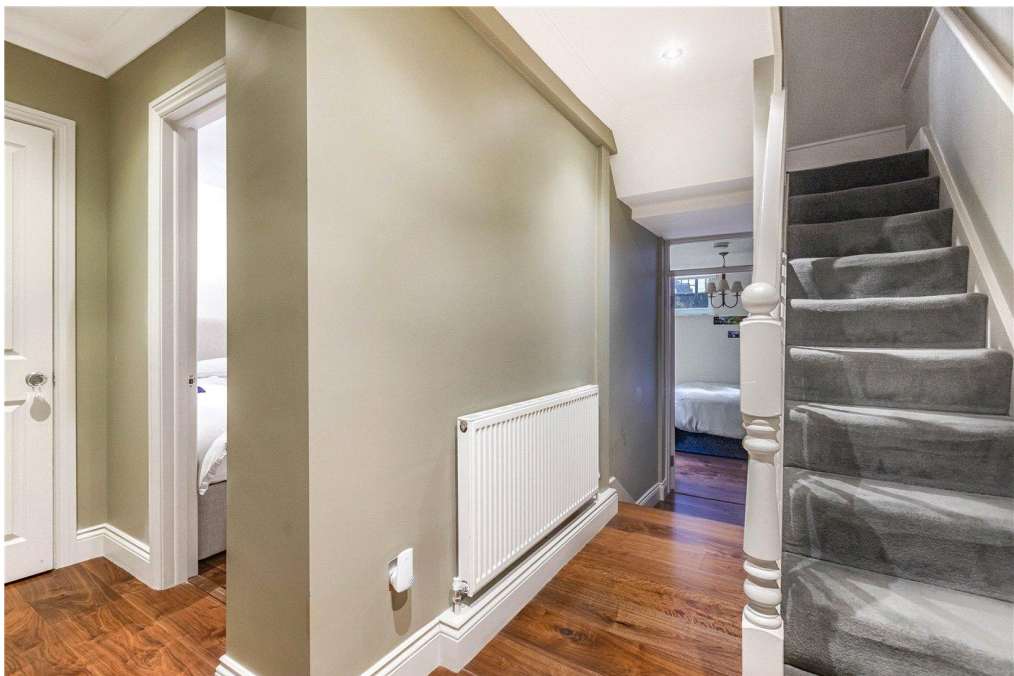
Share of Freehold: About 960 years remaining

Service Charge: N/A

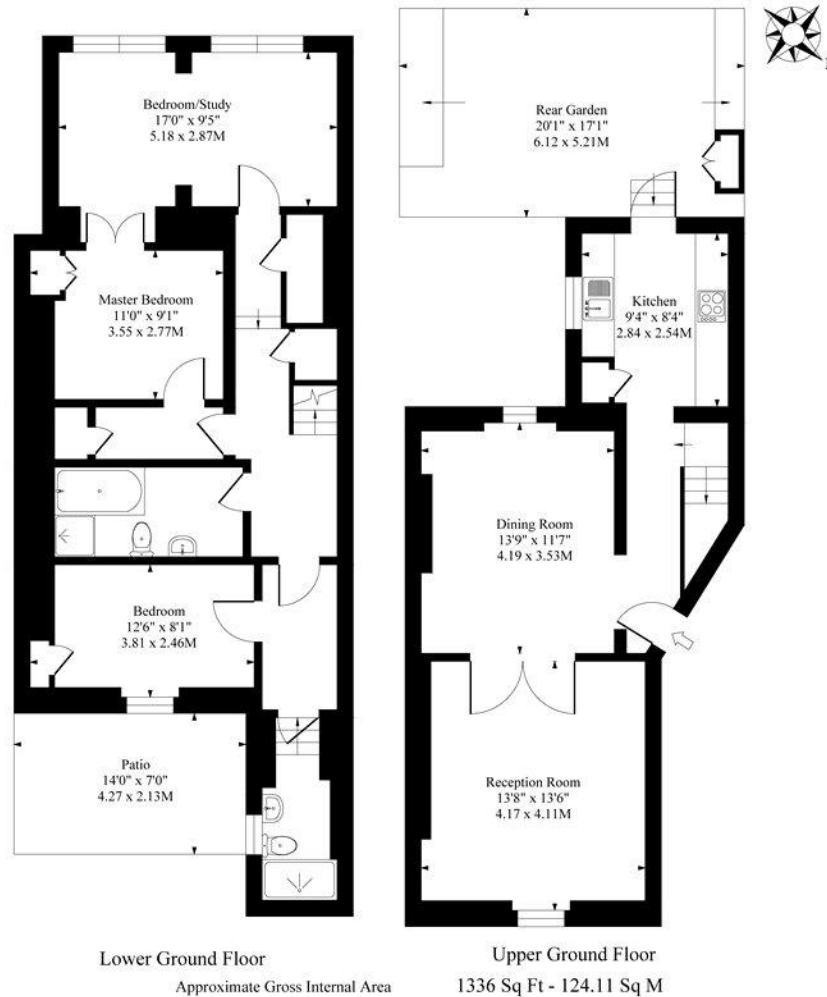
Ground Rent: N/A

Council Tax: Band C, Islington





Wilmington Square WC1



Measured in according with RICS guidelines. Every attempt is made to ensure accuracy
However all measurements are approximate.
The floor plan is illustrative purposes only and is not to scale

Score	Energy rating	Current	Potential
92+	A		
81-91	B		
69-80	C		75 C
55-68	D	67 D	
39-54	E		
21-38	F		
1-20	G		

Clerkenwell & City | 020 7405 1288 | clerkenwell@winkworth.co.uk

winkworth.co.uk

Winkworth wishes to inform prospective buyers and tenants that these particulars are a guide and act as information only. All our details are given in good faith and believed to be correct at the time of printing but they don't form part of an offer or contract. No Winkworth employee has authority to make or give any representation or warranty in relation to this property. All fixtures and fittings, whether fitted or not are deemed removable by the vendor unless stated otherwise and room sizes are measured between internal wall surfaces, including furnishings.

Winkworth