



Knaresborough Place, Earls Court, London, SW5

£692.31 per week* / £3,000 per month – Furnished or Part Furnished

A stylish two bedroom, two bathroom flat with private garden, located moments from Earls Court station.

2 Bedrooms | 1 Reception Room | 2 Bathrooms | Garden | Lower Ground Floor Flat | 668 Approx sq ft | EPC: C

APPLICANT FEES MAY BE APPLICABLE
DEPOSIT OF 5 WEEKS' RENT
HOLDING DEPOSIT OF 1 WEEK'S RENT

Winkworth

[winkworth.co.uk](https://www.winkworth.co.uk)

for every step...



DESCRIPTION

This well-proportioned apartment has been tastefully renovated throughout with wooden floors and contemporary fixtures and fittings. The spacious open-plan kitchen/reception room features a modern, fully-fitted kitchen, excellent entertaining space and French-windows onto the garden.

The large master bedroom benefits from ample built in storage and en-suite bathroom, whilst the second bedroom has use of the family shower room.

This property is available immediately on a furnished basis.




ACCOMMODATION

2 Bedrooms, 1 Reception Room,
2 Bathrooms, Garden, Lower Ground Floor,
Furnished, 668 Approx Sq ft

COUNCIL TAX BAND

Band G



Energy Efficiency Rating		
	Current	Potential
Very energy efficient - lower running costs		
(92+) A		
(81-91) B		
(69-80) C	80	80
(55-68) D		
(39-54) E		
(21-38) F		
(1-20) G		
Not energy efficient - higher running costs		
England, Scotland & Wales	EU Directive 2002/91/EC 	



KNARESBOROUGH PLACE SW5

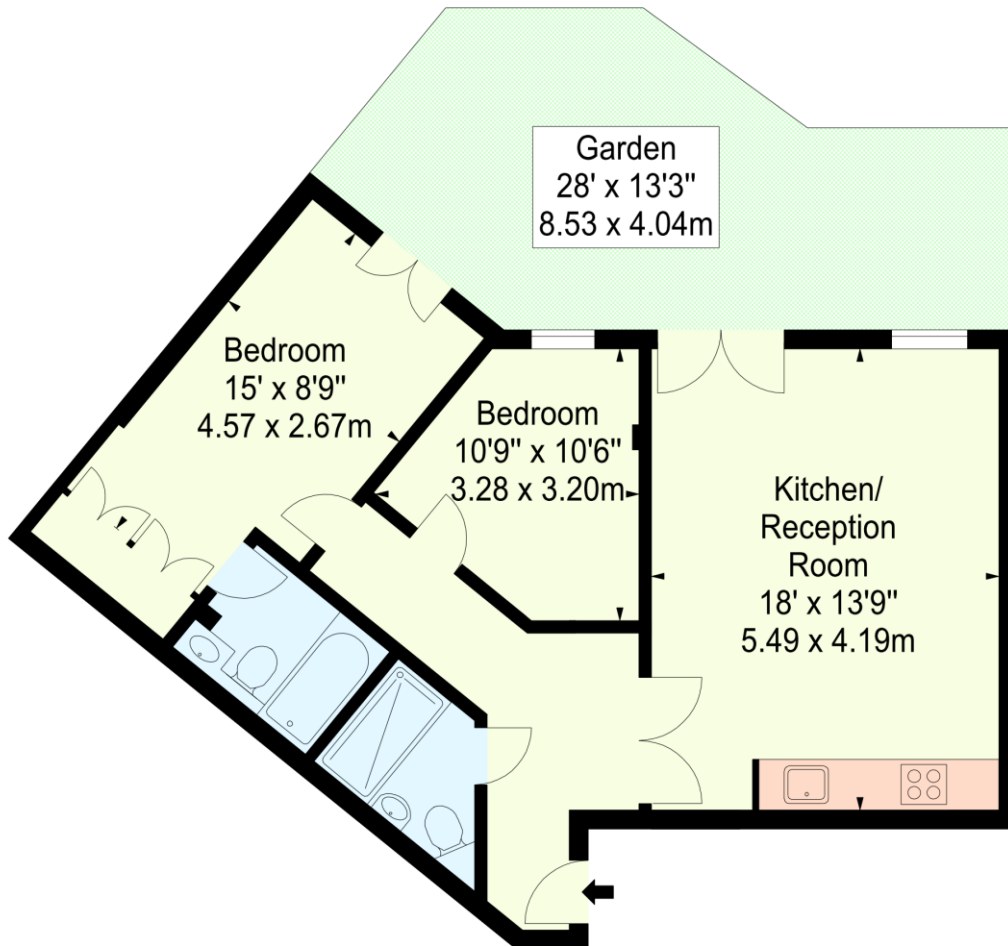
APPROX. GROSS INTERNAL AREA *

661 Ft² - 61.41 M²

Garden - 261 Sq Ft

Illustration For Identification Only, Not to Scale
All Calculations include Any/All Areas Under 1.5m Head Height.

* As Defined by RICS - Code of Measuring Practice



LOWER GROUND FLOOR



www.bkrfloorplans.co.uk

T: 0845 257 2023

© BKR 2014

This floorplan is for illustration purposes only and is not to scale. The position and size of doors, windows, appliances and other features are approximate.

**Please note, the rent cannot be paid on a weekly basis*

Winkworth

South Kensington Lettings | 020 7370 6767 | lettings.southken@winkworth.co.uk

winkworth.co.uk

for every step...

Winkworth wishes to inform prospective buyers and tenants that these particulars are a guide and act as information only. All our details are given in good faith and believed to be correct at the time of printing but they don't form part of an offer or contract. No Winkworth employee has authority to make or give any representation or warranty in relation to this property. All fixtures and fittings, whether fitted or not are deemed removable by the vendor unless stated otherwise and room sizes are measured between internal wall surfaces, including furnishings.