



MYDDELTON SQUARE, EC1R
£900,000 SHARE OF FREEHOLD, 117 YEARS REAMAINING

Winkworth



MYDDELTON SQUARE, EC1R

An exceptionally charming two bedroom flat set in a Georgian Townhouse on the quiet and picturesque Myddelton Square, the flat offers a wealth of charm and character and a stones throw away from the picturesque Georgian garden square.

The property comprises of two good sized double bedrooms, a large reception room, separate kitchen and bathroom.

Myddelton Square is located off Amwell Street which prides itself on its eclectic array of independent boutiques and businesses. The famous Exmouth Market, with its cafes, bars and restaurants, is also only a short walk away.

Transport facilities and local amenities are plentiful with underground/rail services at Angel, Kings Cross and Farringdon, with many bus routes to the City and the West End.

Share of Freehold – 117 years remaining

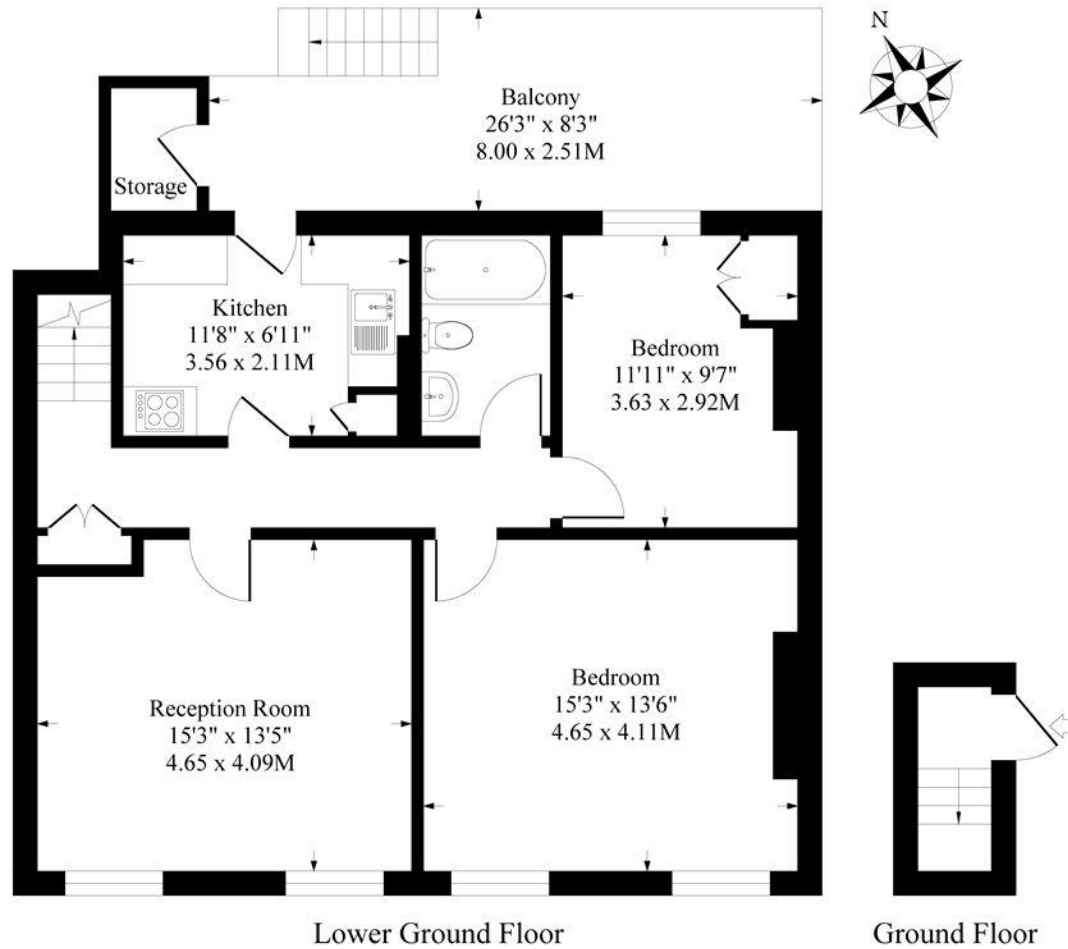
Service Charge: Approx. £2,582.00 p/a

Council Tax: Band E





Myddleton Square EC1



Approximate Gross Internal Area 795 Sq Ft - 73.85 Sq M

Measured in according with RICS guidelines. Every attempt is made to ensure accuracy
However all measurements are approximate.
The floor plan is illustrative purposes only and is not to scale

Score	Energy rating	Current	Potential
92+	A		
81-91	B		
69-80	C	69 C	79 C
55-68	D		
39-54	E		
21-38	F		
1-20	G		

Clerkenwell & City | 020 7405 1288 | clerkenwell@winkworth.co.uk

winkworth.co.uk

Winkworth wishes to inform prospective buyers and tenants that these particulars are a guide and act as information only. All our details are given in good faith and believed to be correct at the time of printing but they don't form part of an offer or contract. No Winkworth employee has authority to make or give any representation or warranty in relation to this property. All fixtures and fittings, whether fitted or not are deemed removable by the vendor unless stated otherwise and room sizes are measured between internal wall surfaces, including furnishings.

Winkworth