



Wrentham Avenue, Kensal Rise, NW10

£650,000 *Leasehold*

2  1  1 

Two bedroom, split level flat, offered with no upper chain and located on the sought after Wrentham Avenue.

KEY FEATURES

- SPLIT LEVEL
- TWO BEDROOM
- SOUGHT AFTER LOCATION
- NO UPPER-CHAIN
- LONG LEASEHOLD REMAINING
- CLOSE TO BAKERLOO & OVERGROUND LINES



Kensal Rise & Queens Park

0208 960 4947 | kensalrise@winkworth.co.uk

Winkworth

for every step...

Winkworth wishes to inform prospective buyers and tenants that these particulars are a guide and act as information only. All our details are given in good faith and believed to be correct at the time of printing but they don't form part of an offer or contract. No Winkworth employee has authority to make or give any representation or warranty in relation to this property. All fixtures and fittings, whether fitted or not are deemed removable by the vendor unless stated otherwise and room sizes are measured between internal wall surfaces, including furnishings.



DESCRIPTION

This split level flat is offered in excellent condition throughout, featuring a bright and airy reception room with bay window, a modern fitted kitchen, and two well-proportioned bedrooms. The split-level layout adds character and separation enhancing privacy and functionality.

Offered with no upper chain, this well-presented property is not one to be missed - especially due to its prime location.

Additional benefits include ample storage, and recent re-

decoration throughout, allowing you to move in with minimal effort.

Located close to local amenities, public transport links, and schools, this flat combines comfort, space, and practicality.

Viewing comes highly recommended.





LOCATION

Wrentham Avenue is a sought after location in Kensal Rise due to its proximity to transport links at Queens Park offering the Bakerloo and Overground Lines, as well as the Overground at Kensal Rise being almost a stones throw away at the end of the street.

Queens Park itself is a short walk away, as well as a number of great local schools, and the array of amenities along Chamberlayne Road and Salusbury Road.

For more information, scan the QR code or visit the link below

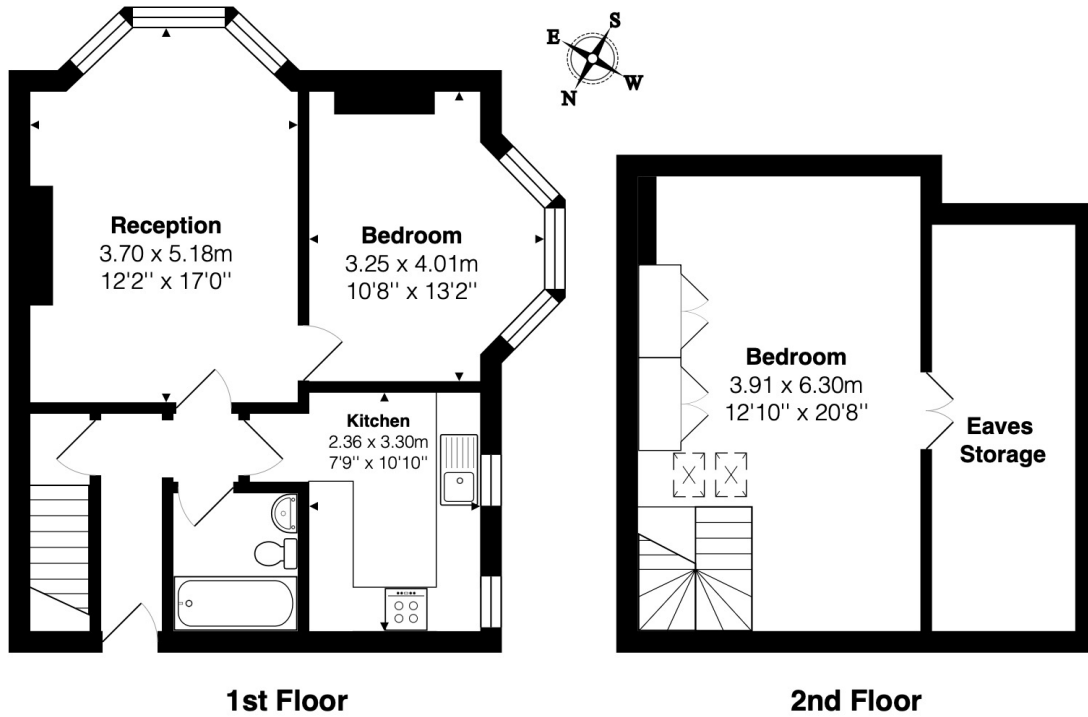


<https://www.winkworth.co.uk/sale/property/KQP250316>

Where no figures are shown, we have been unable to ascertain the information. All figures that are shown were correct at the time of printing.

MATERIAL INFO

Tenure: Leasehold
Term: 102 year and 5 months
Service Charge: £3059.56 per annum
Ground Rent: (Ask Agent)
Council Tax Band: C
EPC rating: D



Total Area: 86.9 m² ... 935 ft²

All measurements are approximate and for display purposes only

Kensal Rise & Queens Park

0208 960 4947 | kensalrise@winkworth.co.uk

Winkworth

for every step...

Winkworth wishes to inform prospective buyers and tenants that these particulars are a guide and act as information only. All our details are given in good faith and believed to be correct at the time of printing but they don't form part of an offer or contract. No Winkworth employee has authority to make or give any representation or warranty in relation to this property. All fixtures and fittings, whether fitted or not are deemed removable by the vendor unless stated otherwise and room sizes are measured between internal wall surfaces, including furnishings.