



Newport Farm, Newport Lane, Braishfield, Romsey, SO51 0PL

**Winkworth**





## BEAUTIFUL BARN CONVERSION

The property is located in one of Romsey's most desirable villages, Braishfield. Braishfield is a small village to the north-west of Romsey and has a variety of amenities including two public houses, a junior school, a village hall and shop. Schools for all ages, both state and private, are easily accessible. The larger centres of Southampton and Winchester are both within a 20-minute drive. The market town of Romsey approximately 3 miles distant.

Newport Farm is a beautifully presented barn conversion with idyllic views of the surrounding farmland. The property has a real sense of space with its wonderful vaulted ceilings in both the sitting room and kitchen. There is versatile accommodation throughout, with the master bedroom being on the ground floor with en-suite facilities and a dressing room. Upstairs there are two additional bedrooms, also with en-suite facilities. There is also a separate utility room to complete the accommodation.

A private driveway leads to the property which benefits from parking for multiple vehicles. The beautiful courtyard garden is mainly laid to lawn and benefits from countryside views of farmland and beyond.









# Winkworth

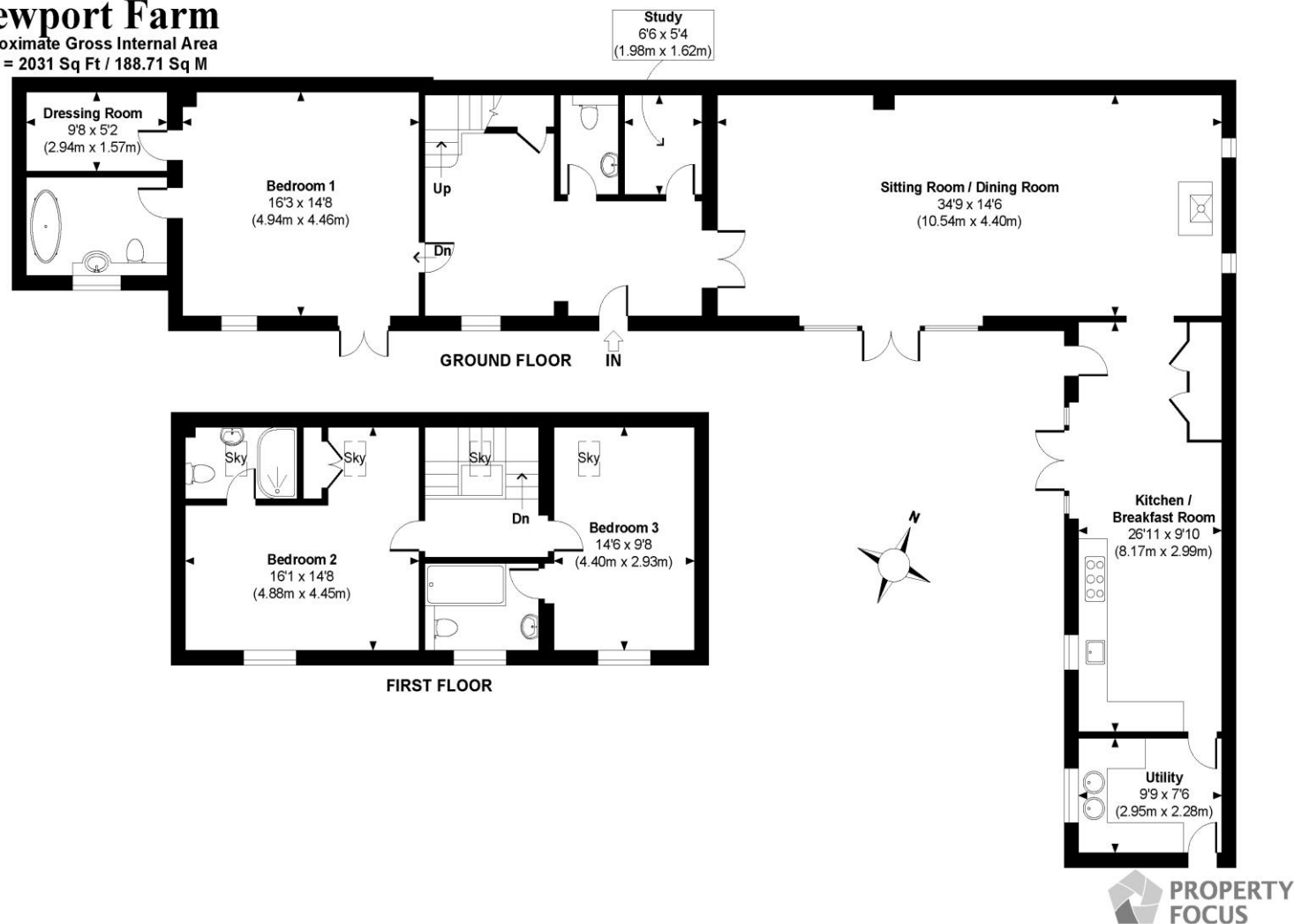
**Address: Newport Farm, Newport Lane,  
Braishfield, Romsey, SO51 0PL**

**Council Tax Band - G**



## Newport Farm

Approximate Gross Internal Area  
Total = 2031 Sq Ft / 188.71 Sq M



© www.propertyfocus.co | Professional Property Photography & Floorplans  
This plan is for illustrative purposes only and is not to scale. If specified, the Gross Internal Area (GIA), dimensions, North point orientation and the size and placement of features are approximate and should not be relied on as a statement of fact. No guarantee is given for the GIA and no responsibility is taken for any error, omission or misrepresentation.

[winkworth.co.uk/romsey](http://winkworth.co.uk/romsey)

### Winkworth Romsey

18 Market Place, Romsey, Hampshire, SO51 8NA  
01794 511911 | [romsey@winkworth.co.uk](mailto:romsey@winkworth.co.uk)

[winkworth.co.uk/romsey](http://winkworth.co.uk/romsey)

### Winkworth Winchester

2 Black Swan Buildings, Southgate Street,  
Winchester, Hampshire, SO23 9DT  
01962 866777 | [winchester@winkworth.co.uk](mailto:winchester@winkworth.co.uk)

### Winkworth Mayfair & Country House Department

11 Berkeley Street, Mayfair, London, W1J 8DS  
020 7871 0589 | [countryhouse@winkworth.co.uk](mailto:countryhouse@winkworth.co.uk)

# Winkworth

See things differently