

Portland Place, London, W1B
£1,675 Per Week

2  1  2 



Winkworth Mayfair
020 7589 6616 | lettings.mayfair@winkworth.co.uk

Winkworth

for every step...

Period Charm Meets Contemporary Comfort in the Heart of the West End

ABOUT THIS HOUSE

A Spacious Two-Bedroom Apartment in a Prestigious Portland Place Address. Located on the sixth floor of a well-maintained period building with lift access and porter/concierge service, this elegant two-bedroom apartment offers refined living in the heart of the West End. Spanning approximately 1,184 sq ft, the property is part-furnished and available for a minimum 12-month letting term.

The apartment blends period charm with modern finishes, featuring a generous layout ideal for both everyday living and entertaining. The reception room is bright and spacious, complemented by a sleek, contemporary kitchen and stylish bathrooms finished to a high standard. Hot water and heating are included in the rent, as these are supplied by the building and

covered by the landlord's service charge, offering added convenience and value. The flat is also equipped with residential full fibre broadband provided by G Network Communications Ltd (GN), with a direct cable connection into the property for fast and reliable internet access. Residents may apply for a Westminster parking permit through the local council. Situated near the boutiques and restaurants of Marylebone High Street, as well as the retail and lifestyle offerings of Oxford Circus and Regent Street, the location provides access to a vibrant mix of shopping, dining, and cultural experiences. Regent's Park is also nearby, offering expansive green space for outdoor leisure and relaxation. A rare opportunity to live in one of London's most iconic addresses, combining classic architecture with modern urban living.

KEY FEATURES

- 2 bedrooms
- 1 reception room
- 2 bathrooms
- 1,184 Square Feet
- Upper floor with lift
- Porter / Concierge











FINER DETAILS

- 2 bedrooms
- 1 reception room
- 2 bathrooms
- 1,184 Square Feet
- Upper floor with lift
- Porter / Concierge

Score	Energy rating	Current	Potential
92+	A		
81-91	B		
69-80	C	75 C	82 B
55-68	D		
39-54	E		
21-38	F		
1-20	G		

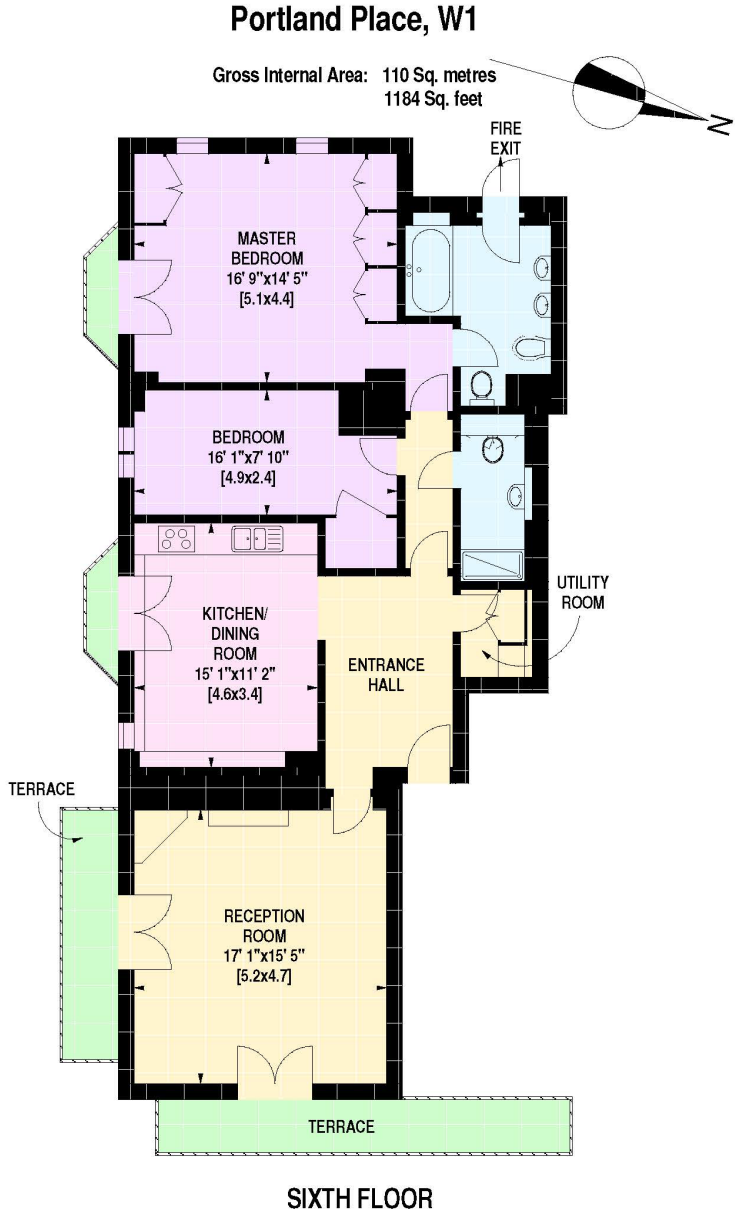


Illustration for identification purposes only, not to scale.
All measurements and areas are approximate, and include wardrobes and window bays where appropriate.
This Floorplan has been prepared in accordance with the current edition of the RICS code of measuring practice.
©Mays Floorplans 020 8871 4668



Winkworth Mayfair
020 7589 6616 | lettings.mayfair@winkworth.co.uk

Winkworth

for every step...