



ATLANTA BUILDING, LONDON, SE13

GUIDE PRICE £375,000 - £400,000 LEASEHOLD

BROUGHT TO THE MARKET CHAIN FREE, IS THIS THIS TWO BEDROOM PURPOSE BUILT APARTMENT WITH SPACIOUS OPEN PLAN KITCHEN/DINER AND RECEPTION ROOM WITH JULIET BALCONY, TWO DOUBLE BEDROOM AND THREE PIECE FAMILY BATHROOM SUITE.

Greenwich | 02030533033 | greenwich@winkworth.co.uk

Winkworth



DESCRIPTION:

Brought to the market chain free, is this two bedroom purpose built apartment with spacious open plan kitchen/diner and reception room with Juliet balcony, two double bedrooms and three piece family bathroom suite.

Deals Gateway is an incredibly popular development, located just to the West of Greenwich town centre, and lies adjacent to Deptford Bridge DLR. The Royal Park with its Observatory and the open heath are just a short walk away.

The development also offers the use of a concierge, gym, lap pool and on site restaurant and shopping facilities.

The property is bright and airy throughout and is EWS1 compliant.

Early viewings are highly recommended as this apartment offers true value for money for first time buyers or for investment.

AT A GLANCE

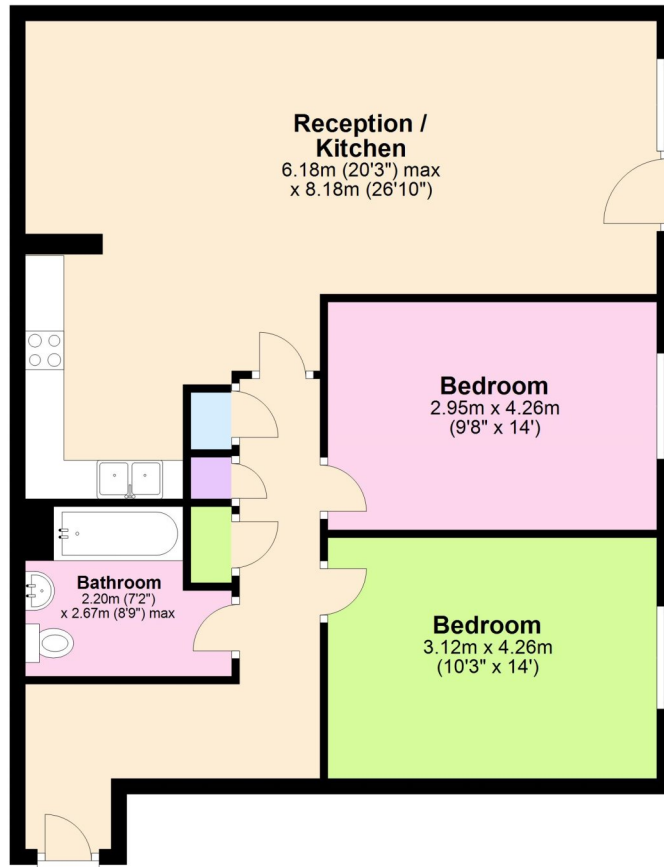
- Chain Free
- Two Double Bedrooms
- Juliet Balcony
- Three Piece Bathroom Suite
- EWS1 Compliant
- Close Proximity to Deptford DLR
- EPC: C





Second Floor

Approx. 81.2 sq. metres (873.6 sq. feet)



Total area: approx. 81.2 sq. metres (873.6 sq. feet)

This floorplan is for illustration purposes only and is not to scale. The position and size of doors, windows, appliances and other features are approximate.

Energy Efficiency Rating		Current	Potential
Very energy efficient - lower running costs			
(92)	A		
(81-91)	B	81	81
(69-80)	C		
(55-68)	D		
(39-54)	E		
(21-58)	F		
(1-20)	G		
Not energy efficient - higher running costs			
England, Scotland & Wales		EU Directive 2002/91/EC	

Greenwich | 02030533033 | greenwich@winkworth.co.uk

Winkworth

winkworth.co.uk

See things differently

Winkworth wishes to inform prospective buyers and tenants that these particulars are a guide and act as information only. All our details are given in good faith and believed to be correct at the time of printing but they don't form part of an offer or contract. No Winkworth employee has authority to make or give any representation or warranty in relation to this property. All fixtures and fittings, whether fitted or not are deemed removable by the vendor unless stated otherwise and room sizes are measured between internal wall surfaces, including furnishings.