



SHEAVESHILL COURT, THE HYDE, COLINDALE, LONDON, NW9
£395,000 LEASEHOLD

PURPOSE BUILT THREE BEDROOM DUPLEX FLAT

Kingsbury | 020 8204 0000 | kingsbury@winkworth.co.uk

Winkworth

for every step...

winkworth.co.uk

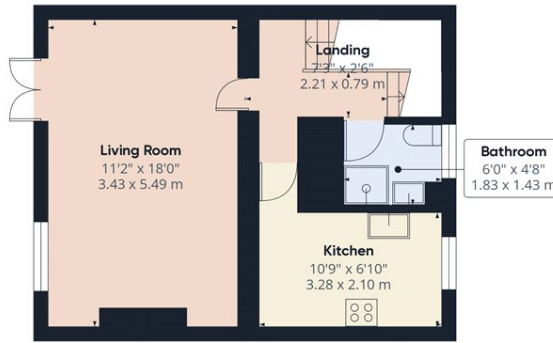


DESCRIPTION: This well-presented purpose-built three-bedroom duplex flat features a spacious reception room, ideal for entertaining or relaxing, alongside a separate, compact yet functional kitchen. A basic bathroom caters to everyday needs, while a separate level boasts three well-proportioned bedrooms, providing ample space for family living or tenants. Convenience is key, with residents' parking and a prime location in the heart of Colindale. You'll find various supermarkets, schools, and bus routes right on your doorstep. For commuters, Colindale Underground Station (Northern Line) is less than half a mile away, while Hendon Thameslink Station is easily accessible on foot or by bus.

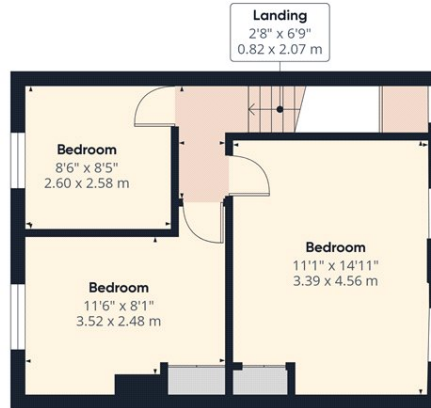


Winkworth
for every step...

Winkworth



Ground Floor



Floor 1

Approximate total area⁽¹⁾
714.94 ft²
66.42 m²

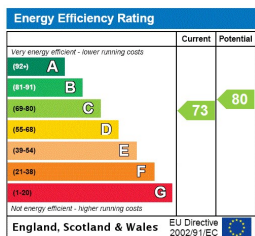
(1) Excluding balconies and terraces

While every attempt has been made to ensure accuracy, all measurements are approximate, not to scale. This floor plan is for illustrative purposes only.

Calculations are based on RICS IPMS 3C standard.

GIRAFFE360

This floorplan is for illustration purposes only and is not to scale. The position and size of doors, windows, appliances and other features are approximate.



Tenure: Leasehold

Term: 173 year appx

Service Charge: £1141 per annum

Ground Rent: £ 10 Annually (subject to increase)

Council Tax Band: C

Where no figures are shown, we have been unable to ascertain the information. All figures that are shown were correct at the time of printing.

Winkworth

Kingsbury | 020 8204 0000 | kingsbury@winkworth.co.uk

for every step...

winkworth.co.uk

Winkworth wishes to inform prospective buyers and tenants that these particulars are a guide and act as information only. All our details are given in good faith and believed to be correct at the time of printing but they don't form part of an offer or contract. No Winkworth employee has authority to make or give any representation or warranty in relation to this property. All fixtures and fittings, whether fitted or not are deemed removable by the vendor unless stated otherwise and room sizes are measured between internal wall surfaces, including furnishings.