



Winkworth



Winkworth



Winkworth

BAKER COURT, BOREHAMWOOD, HERTFORDSHIRE, WD6

**£275,000 LEASEHOLD**

**A CHAIN FREE TWO BEDROOM DUPLEX FLAT.**

**Borehamwood** | 020 8953 8899 | [borehamwood@winkworth.co.uk](mailto:borehamwood@winkworth.co.uk)





## DESCRIPTION:

Offered for sale Chain Free is this split level, two double bedroom top floor purpose built flat.

benefitting from a south westerly facing lounge, kitchen and balcony the property provides bright and well proportioned accommodation totalling 639 square feet and would be ideal for a first time buyer or buy to let investor.

Borehamwood High Street shops and restaurants are a short walk away and Borehamwood and Elstree Station along with multiple bus routes are nearby.

## AT A GLANCE

- Two Bedrooms
- Chain Free
- South Westerly Facing Balcony
- Gas Central Heating
- Residents Parking
- 639 Square Feet









Approximate Gross Internal Area = 59.4 sq m / 639 sq ft

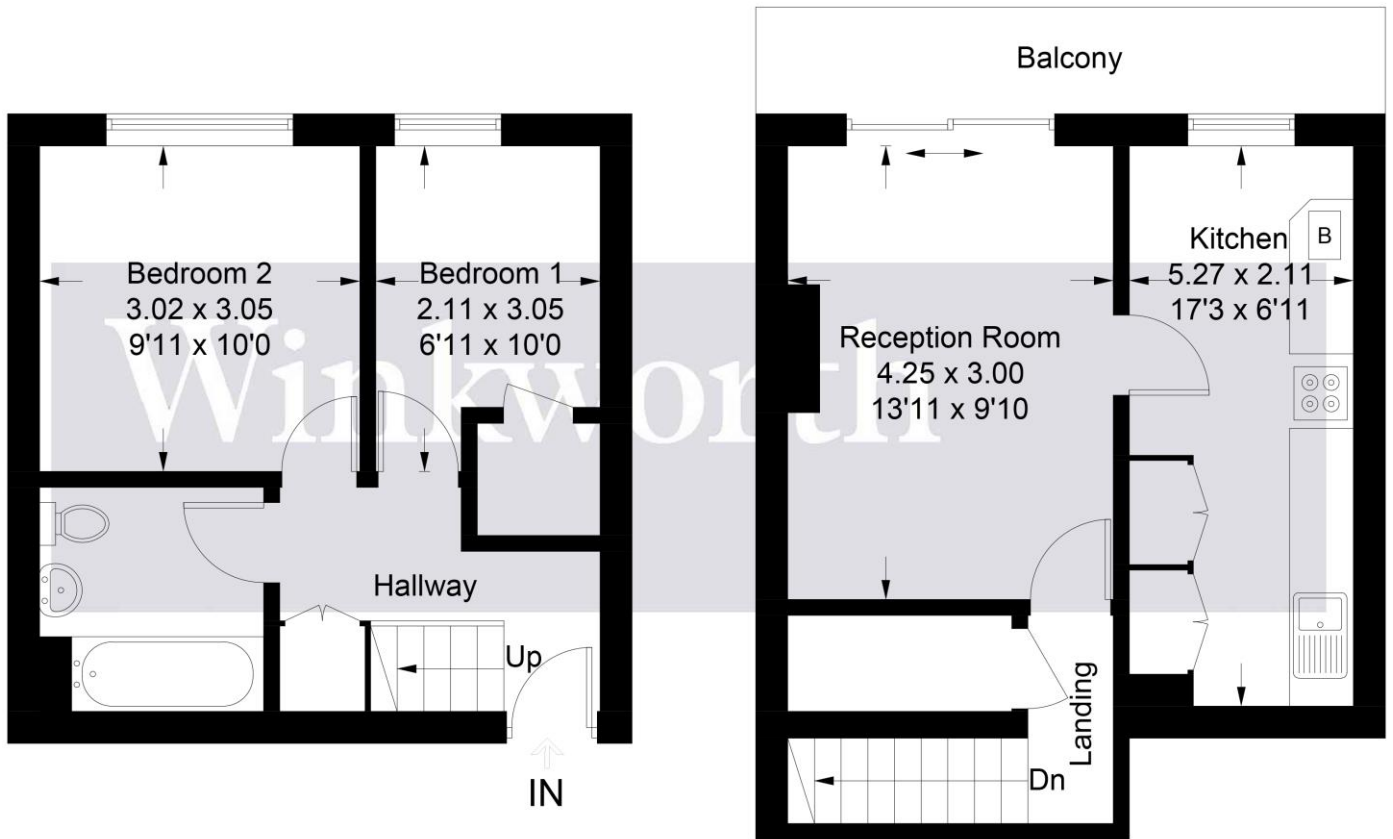


Illustration for identification purposes only, measurements are approximate, not to scale. Winkworth © 2021 (ID754637)

This floorplan is for illustration purposes only and is not to scale. The position and size of doors, windows, appliances and other features are approximate.