



**BUCKLAND HOUSE, OFFORD ROAD, LONDON, N1**  
**£500,000 LEASEHOLD**

## **A BRIGHT, TWO BEDROOM APARTMENT SET ON THE SECOND FLOOR IN THE HEART OF BARNSBURY**



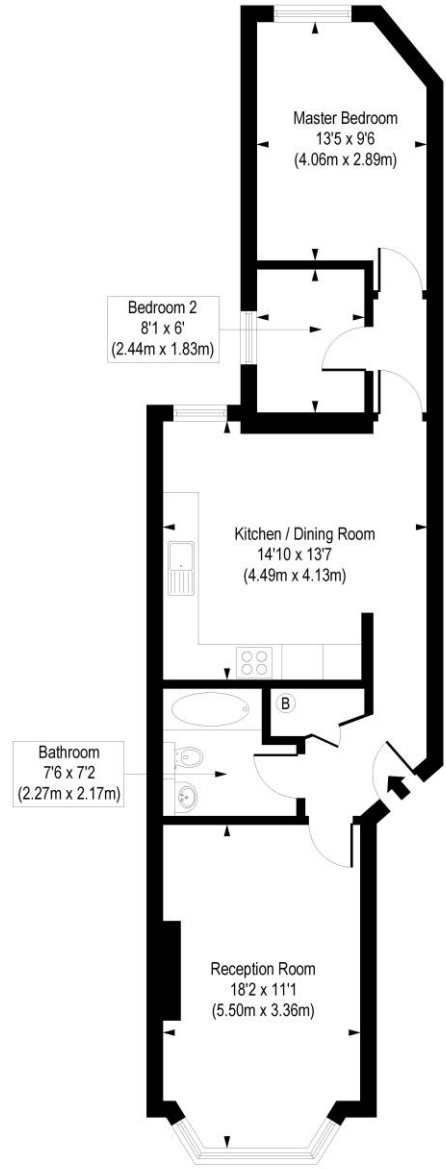
## **DESCRIPTION:**

A stunning, two double bedroom apartment set across the second floor of this well-kept block in the heart of Barnsbury, N1. The property is flooded with natural light throughout and has been recently redecorated. Accommodation comprises of wonderfully bright living/kitchen/dining room. Both bedrooms are genuine sized doubles and the flat has the added bonus of a separate office space. The property is completed with a white tiled bathroom and offered to the market on a chain free basis.

Buckland House is nestled away in the residential roads of Barnsbury, while the house is perfectly located for easy access to the many boutique shops, restaurants and bars on Upper Street as well as an array of fantastic transport links. The property is 0.3 mile walk from Highbury and Islington station which offers underground services on the Victoria line and a selection of over ground services. A variety of excellent bus routes are at hand creating effortless access across London whilst international travel is easily facilitated from St Pancras.



**Buckland House, Offord Road, N1**  
 Approx. Gross Internal Floor Area 720 sq. ft / 66.85 sq. m



Second Floor

COMPLIANT WITH RICS CODE OF MEASURING PRACTICE. Floorplan is for illustrative purposes only and is not to scale. Every attempt has been made to ensure the accuracy of the floorplan shown, however all measurements, fixtures, fittings and data shown are an approximate interpretation for illustrative purposes only. Liability for errors, omissions or mis-statement through negligence or otherwise is hereby excluded.

This floorplan is for illustration purposes only and is not to scale. The position and size of doors, windows, appliances and other features are approximate.

