



5 PRINCESS ALEXANDRA COURT, BONHAY ROAD EXETER, EX4 3BZ

Winkworth



Princess Alexandra Court is ideally located for access to both the city centre and Historic Quay side. Located on the bank of the River Exe, this apartment offers lovely views over the river, in addition, access to some fantastic walk and cycle routes. This property would make an ideal investment, first time or second home.

- At a glance...
- Two Double Bedrooms
- Large Open Plan Living/Dining/Kitchen Area
- Fitted Family Bathroom
- En-suite Shower Room
- Good Condition Throughout
- Riverside Location
- Single Garage
- Easy Access to Exeter City Centre
- Viewing Highly Recommended

Utilities ...

- All mains services connected
- Lease 999 years from 1st January 2003
- Share Of Management Company
- Ground Rent £150.00 per annum
- Service Charge £2009.28 per annum
- Exeter City Council Tax Band C

The property is located on the banks of the River Exe and within a short walking distance to Exeter city centre. The property enjoys lovely views over the river from the large living room and main bedroom.

The Property:

This large apartment located in a gated development and close to the River Exe and city centre, offers spacious accommodation. Located on the second floor via either stairs or a lift. The living/dining/kitchen area is spacious with plenty natural of light coming in. The kitchen area offers all built-in appliances with, a range of base and eye level units finished in white gloss. The living/dining area is spacious and offers double doors with a Juliet balcony with views over the river and beyond. The main bedroom is a good double room with access to an en-suite shower room, this room also offers river views. Bedroom two is also a double with double doors to a Juliet balcony. The family bathroom finishes off the living accommodation.

Outside:

The development is accessed via remote control electric gates, which gives access to the parking areas and garaging. There is a bin storage area and cycle racks available for residence. The property is offered with a single garage.

Location:

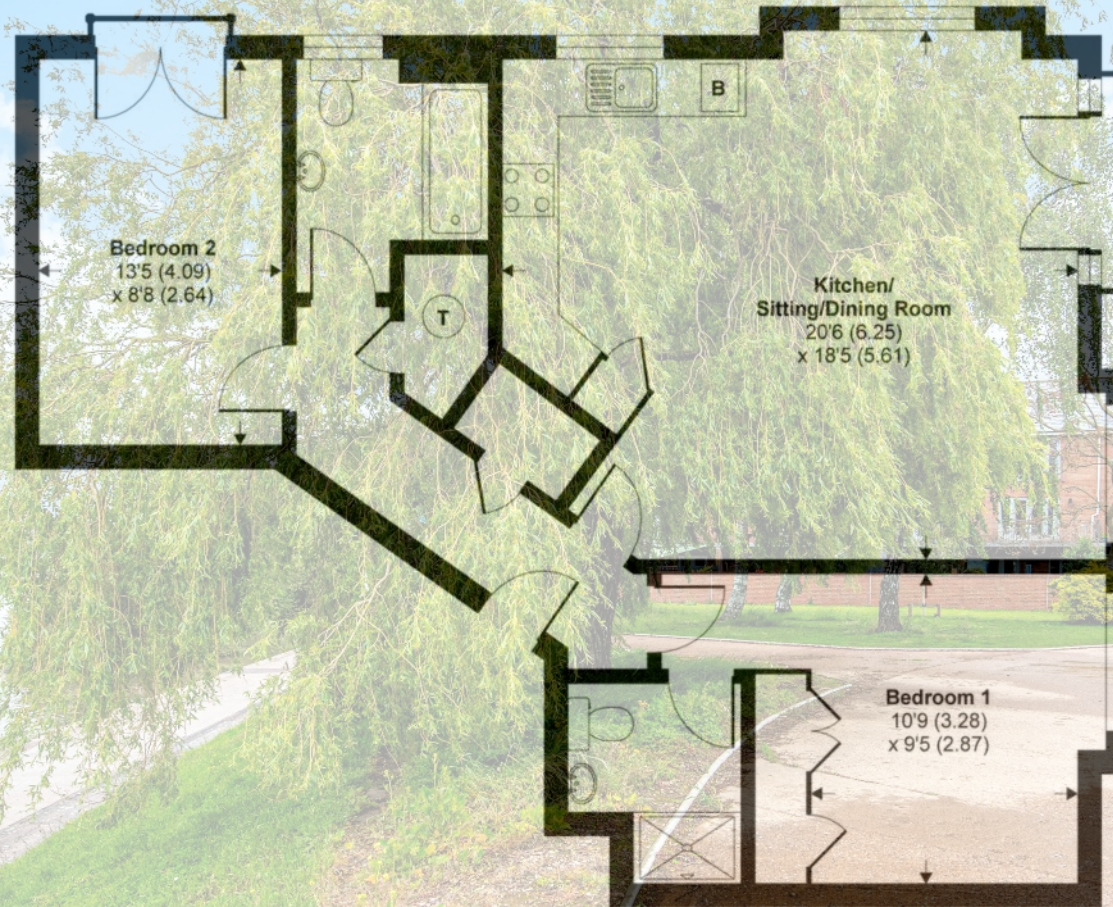
Located close to the city centre with its extensive range of shops, cafes and restaurants. In addition to this, the historic cathedral and Quay side, both walking distance to the property. Exeter, also offers an excellent NHS hospital, The Royal Devon & Exeter. The university is also within a short distance. Exeter offers major road and rail links with Exeter St David's station being within a short walk, with its regular services to London Paddington. The city is ideally located for access to Devons two coastlines and two national parks, Dartmoor and Exmoor.



Princess Alexandra Court, Bonhay Road, Exeter, EX4

Approximate Area = 829 sq ft / 77 sq m

For identification only - Not to scale

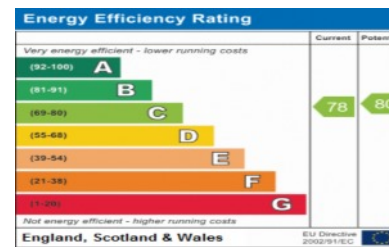


GROUND FLOOR

Exeter office

25 Southernhay East, Exeter, EX1 1QP
01392 271177 exeter@winkworth.co.uk

winkworth.co.uk/exeter



Winkworth

See things differently.