



Harcourt Terrace, West Chelsea, London, SW10

£1,153.85 per week* / £5,000 per month – Furnished or Unfurnished

A beautifully refurbished two double bedroom, two bathroom flat located on the ground floor of this period building with private street access.

2 Bedrooms | 1 Reception Room | 2 Bathrooms | Raised Ground Floor | 1,014 Approx sq ft | EPC: C

APPLICANT FEES MAY BE APPLICABLE
HOLDING DEPOSIT OF 1 WEEK'S RENT
SECURITY DEPOSIT OF 6 WEEKS' RENT

Winkworth

winkworth.co.uk

for every step...



DESCRIPTION

The property benefits from wooden floors, surround sound and underfloor heating throughout the entire flat. The flat comprises a good-sized reception room with large windows, a separate kitchen which can fit a table and chairs, a separate shower room, a master bedroom with excellent built-in storage and en-suite bathroom, and a good-sized second bedroom. Of particular note are the excellent storage cupboards throughout the entire flat. The property is available from the end of October on a furnished or unfurnished basis.



ACCOMMODATION

2 Bedrooms, 1 Reception Room,
2 Bathrooms, Raised Ground Floor,
Furnished or Part Furnished,
1,014 Approx Sq ft

COUNCIL TAX BAND

Band G



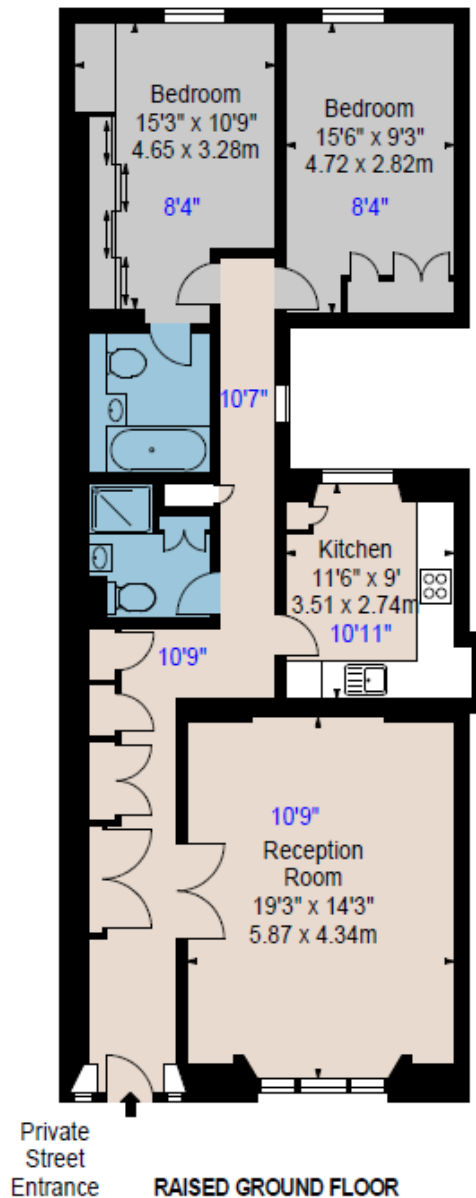
Energy Efficiency Rating		
	Current	Potential
Very energy efficient - lower running costs		
(92+) A		
(81-91) B		
(69-80) C	69	74
(55-68) D		
(39-54) E		
(21-38) F		
(1-20) G		
Not energy efficient - higher running costs		
England, Scotland & Wales	EU Directive 2002/91/EC	



HARCOURT TERRACE SW10

Approx. Gross Internal Area *
1014 Ft² - 94.2 M²

Illustration For Identification Only, Not to Scale
All Calculations include Any/All Areas Under 1.5m Head Height.
* As Defined by RICS - Code of Measuring Practice
(Measurements Supplied By Agents)



BKR

www.bkrfloorplans.co.uk
T: 0345 257 2023
© BKR 2020

This floorplan is for illustration purposes only and is not to scale. The position and size of doors, windows, appliances and other features are approximate.

**Please note, rent cannot be paid on a weekly basis*

South Kensington Lettings | 020 7370 6767 | lettings.southken@winkworth.co.uk

winkworth.co.uk

Winkworth wishes to inform prospective buyers and tenants that these particulars are a guide and act as information only. All our details are given in good faith and believed to be correct at the time of printing but they don't form part of an offer or contract. No Winkworth employee has authority to make or give any representation or warranty in relation to this property. All fixtures and fittings, whether fitted or not are deemed removable by the vendor unless stated otherwise and room sizes are measured between internal wall surfaces, including furnishings.

Winkworth

for every step...