



## Steventon Road, London, W12

£960,000 Freehold

A delightful Arts and Crafts style three bedroom family house with off street parking and fabulous garden.

2 Reception Rooms | Kitchen | Dining Room | 3 Bedrooms | Bathroom | Cloakroom | Loft | Garden |  
1858 Sq Ft / 173 Sq M | Council Tax Band F | EPC Rating Band D

**Winkworth**

for every step...

[winkworth.co.uk](http://winkworth.co.uk)





## LOCATION

Steventon Road is within easy reach of the area's diverse array of shops and restaurants, with several pubs and coffee shops close by. The outside spaces of both Wormholt Park, Trinity Way and Ravenscourt Park are just a short distance away, whilst superb transport links give easy access both in to and out of Central London. A number of well regarded schools are also close by.

## DESCRIPTION

The house offers well proportioned and thoughtfully arranged accommodation throughout, with the extended ground floor offering entrance hall, cloakroom, reception room, dining room kitchen/family room with doors leading to a good size rear garden. The first floor offers three double bedrooms and family bathroom. The house further benefits from off street parking and the possibility to extend in to the loft space (which is already boarded and with a velux window), subject to the usual necessary consents being obtained.







**LOCAL AUTHORITY**  
Hammersmith & Fulham

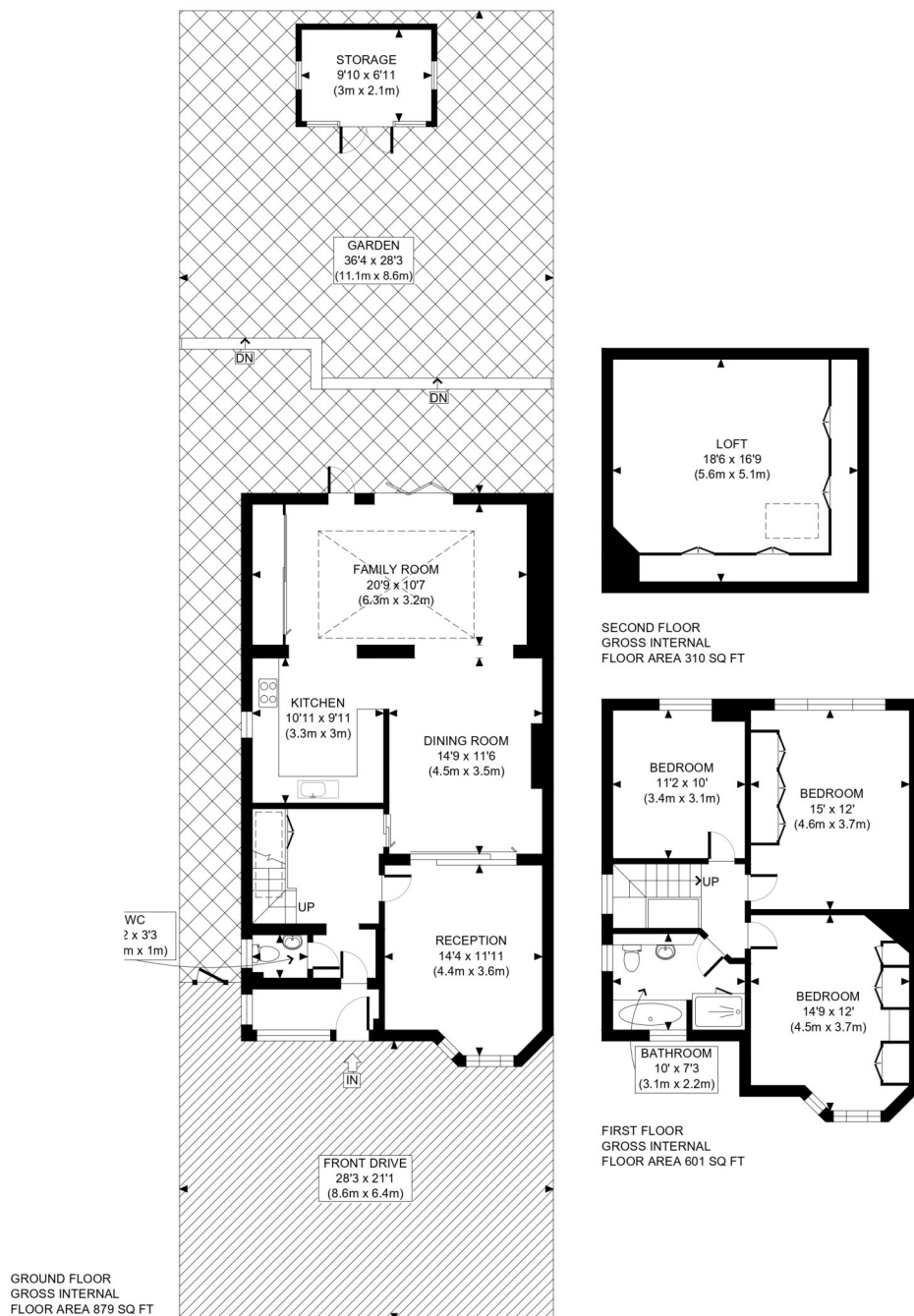
**TENURE**  
Freehold.

**PRICE:** £960,000 Freehold



Score	Energy rating	Current	Potential
92+	A		
81-91	B		
69-80	C		78 C
55-68	D	58 D	
39-54	E		
21-38	F		
1-20	G		





APPROX. GROSS INTERNAL FLOOR AREA WITH STORAGE/LOFT: 1858 SQ FT/ 173 SQM  
APPROX. GROSS INTERNAL FLOOR AREA WITHOUT STORAGE/LOFT: 1480 SQ FT/ 137 SQM

**Winkworth**

STEVENTON ROAD, W12

This plan is for illustrative purposes only and should be used as such by any prospective client. Whilst every attempt has been made to ensure the accuracy of the Floor Plan contained here, measurements of the doors, windows, rooms and any other items are approximate and no responsibility is taken for any errors, omissions, or misstatement. The services, systems and appliances shown have not been tested and no guarantee as to the operability or efficiency can be given.

**PROPERTY PHOTO PLANS** .CO.UK  
ONE STOP SHOP FOR PROPERTY MARKETING

The displayed square footage is taken from the floor plans with measurements created using the Royal Institute of Chartered Surveyors' Code of Practice for Measuring. These measurements are approximate and included for illustrative purposes only. Winkworth does not make any representation as to the accuracy of these measurements and you should seek to verify them for yourself. Winkworth accept no liability for any loss you may suffer if you rely on these measurements.

Shepherds Bush | 020 8735 3266 | [shepherdsbush@winkworth.co.uk](mailto:shepherdsbush@winkworth.co.uk)

**Winkworth**

**for every step...**

Under the Property Misdescriptions Act 1991, these Particulars are a guide and act as information only. All details are given in good faith and are believed to be correct at time of printing. Winkworth give no representation as to their accuracy and potential purchasers or tenants must satisfy themselves by inspection or otherwise as to their correctness. No employee of Winkworth has authority to make or give any representation or warranty in relation to this property.