



HIGHLANDS COURT, LONDON, SE19
£1,850 PER MONTH FURNISHED, PART FURNISHED

A TWO DOUBLE BEDROOM FLAT WITH STUNNING CITY VIEWS AVAILABLE TO RENT

Crystal Palace | 02038693222 | crystalpalace@winkworth.co.uk

Winkworth

for every step...

[winkworth.co.uk](https://www.winkworth.co.uk)



DESCRIPTION:

Located in the desirable Highlands Court just off Gipsy Hill, we are delighted to offer this two double bedroom second floor flat for rent.

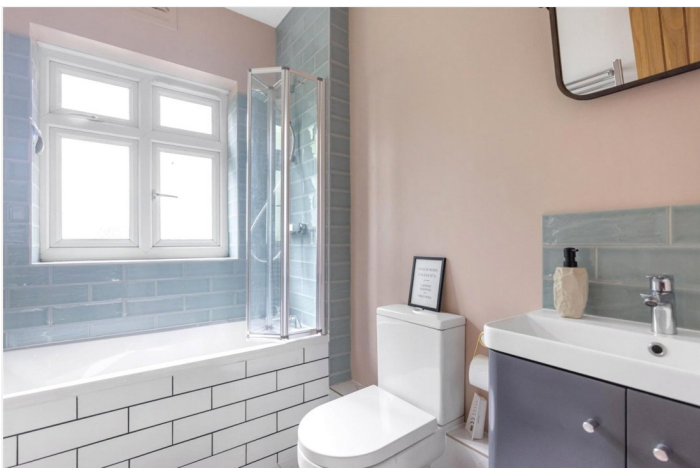
The accommodation comprises; entrance hallway with good inbuilt storage, two double bedrooms, good sized reception with space to dine, separate fitted kitchen with access to a small balcony and bathroom. The property further benefits from off street parking on a first come first served basis.

The property has been finished to a modern specification throughout is offered furnished or part furnished & available immediately.

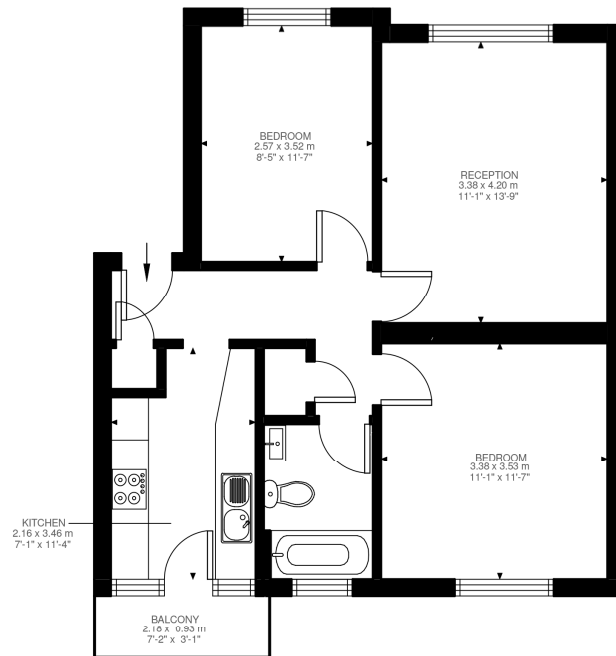
The property is ideally located a short walk from Gipsy Hill rail station (zone 3) as well as the popular Crystal Palace "Triangle" which offers an abundance of independent shops, cafes, bars & restaurants.

AT A GLANCE

- Two double bedrooms
- Second floor flat
- Beautifully presented throughout
- Furnished or part furnished
- Available now
- Holding fee: £426.92 (1 weeks rent)
- Deposit - £2,134.61 (5 week's rent)







Second Floor
607 ft²

Highland Road, SE19
Approximate Gross Internal Area
56.43 SQ.M / 607 SQ.FT

Illustration for identification purposes only. Not to scale.
Floor Plan Drawn According To RICS Guidelines.

This floorplan is for illustration purposes only and is not to scale. The position and size of doors, windows, appliances and other features are approximate.

Score	Energy rating	Current	Potential
92+	A		
81-91	B		
69-80	C		79 C
55-68	D	65 D	
39-54	E		
21-38	F		
1-20	G		

Deposit: £0.00

Holding Deposit:

Council Tax Band: B

Where no figures are shown, we have been unable to ascertain the information. All figures that are shown were correct at the time of printing.

Crystal Palace | 02038693222 | crystalpalace@winkworth.co.uk

Winkworth

for every step...

[winkworth.co.uk](https://www.winkworth.co.uk)

Winkworth wishes to inform prospective buyers and tenants that these particulars are a guide and act as information only. All our details are given in good faith and believed to be correct at the time of printing but they don't form part of an offer or contract. No Winkworth employee has authority to make or give any representation or warranty in relation to this property. All fixtures and fittings, whether fitted or not are deemed removable by the vendor unless stated otherwise and room sizes are measured between internal wall surfaces, including furnishings.