



68 Winchester Road, Romsey, Hampshire, SO51 8JA

Winkworth





STUNNING FAMILY HOME IN CENTRAL ROMSEY

68 Winchester Road is a beautifully presented semi-detached home and is located within easy walking distance of Romsey Town Centre, which provides excellent amenities for everyday needs. Facilities include a range of individual shops, schools, leisure centre, doctors and dentist surgeries with public transport by way of bus and rail services. The M27 can be accessed at Junction 3 with the major centres of Salisbury, Southampton, Winchester and Portsmouth all easily accessible.

This semi-detached home has been completely renovated to an extremely high standard over the last 12 months by the current owners. Whilst it has been fully updated throughout, it still boasts beautiful period features throughout, along with modern family day living. As you enter the property there is a spacious hall way leading to all principal ground floor rooms. To the front there is a living room with feature fire place with beautiful bay window. Further down there is a separate dining room, which in turn leads to the most wonderful open plan kitchen/family room. This features a sizable middle island, along with an atrium room and bi-fold doors looking out to the rear garden. To complete the ground floor accommodation there is also a shower room. To the first floor there are two generous double bedrooms along with a newly fitted family bathroom with separate shower to bath. Further stairs lead to the second floor where there are a further two bedrooms along with a cloakroom.

As you approach the property there is driveway parking for two vehicles. The garden itself is a great size (0.10 of an acre) and is extremely private and mainly laid to lawn.





Winkworth

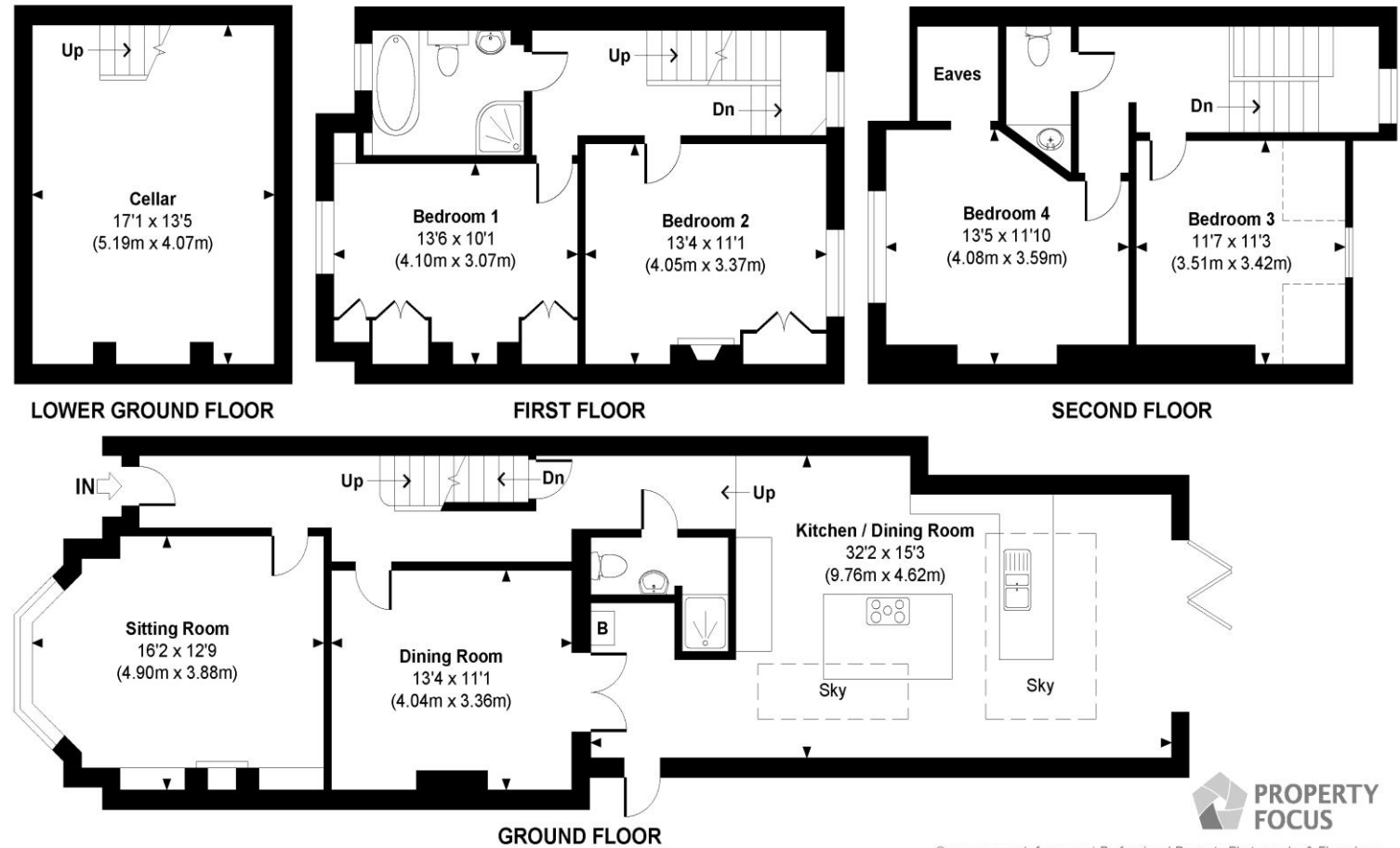
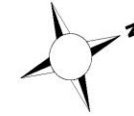
Address: 68 Winchester Road,
Romsey, Hampshire, SO51 8JA

Council Tax Band: "E"



Winchester Road

Approximate Gross Internal Area
Total = 2027 Sq Ft / 188.28 Sq M
Includes areas with Restricted room height.



© www.propertyfocus.co | Professional Property Photography & Floorplans
This plan is for illustrative purposes only and is not to scale. If specified, the Gross Internal Area (GIA), dimensions, North point orientation and the size and placement of features are approximate and should not be relied on as a statement of fact. No guarantee is given for the GIA and no responsibility is taken for any error, omission or misrepresentation.

winkworth.co.uk/romsey

Winkworth Romsey

18 Market Place, Romsey, Hampshire, SO51 8NA
01794 511911 | romsey@winkworth.co.uk

winkworth.co.uk/romsey

Winkworth Winchester

2 Black Swan Buildings, Southgate Street,
Winchester, Hampshire, SO23 9DT
01962 866777 | winchester@winkworth.co.uk

Winkworth Mayfair & Country House Department

11 Berkeley Street, Mayfair, London, W1J 8DS
020 7871 0589 | countryhouse@winkworth.co.uk

Winkworth

See things differently