



ROXBURGH ROAD, WEST NORWOOD, LONDON, SE27  
**£825,000 FREEHOLD**

## THREE BEDROOM DETACHED FAMILY HOUSE

West Norwood | 02086700035 | [westnorwood@winkworth.co.uk](mailto:westnorwood@winkworth.co.uk)

**Winkworth**

for every step...

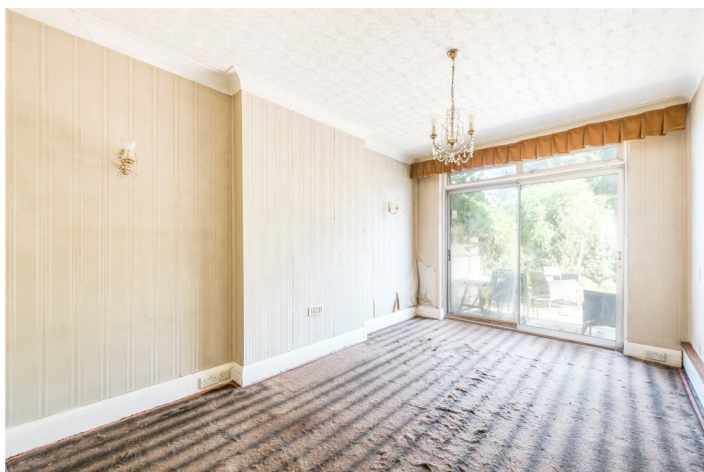
[winkworth.co.uk](http://winkworth.co.uk)





## DESCRIPTION:

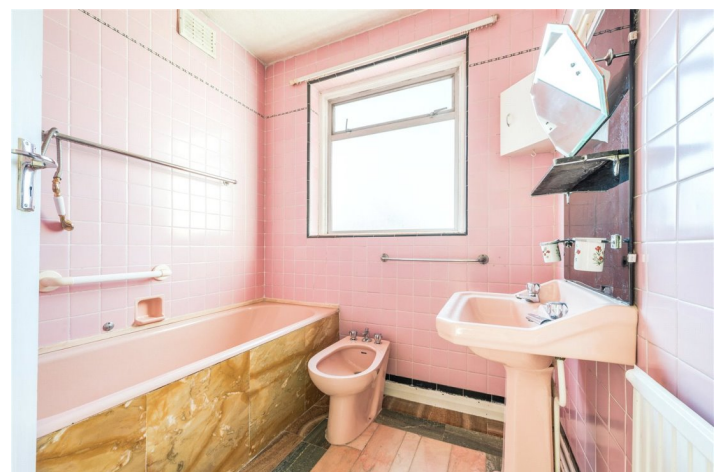
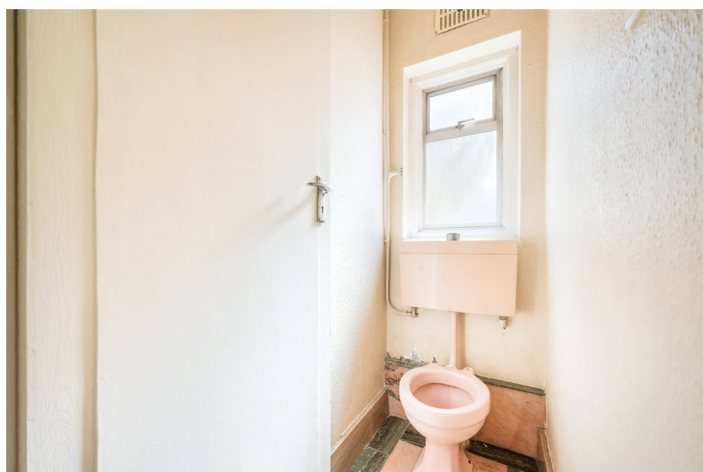
A fantastic opportunity to purchase this three bedroom, 1930's built, detached family house. The house is in need of a complete refurbishment but would be ideal for someone looking to stamp their own mark on a property. The current owner has applied for planning permission to extend both into the loft and on the ground floor at the rear of the property. These permissions are due imminently. There is a mature garden of over 100ft with several different varieties of fruit trees. It is large enough for a garden room to be built which could be used for a variety of reasons- home office or gym- The house is less than a 10-minute walk from West Norwood station with its frequent services to London Bridge and Victoria. The various bars, restaurants and shops along Knights Hill are close to hand as are the Leisure Centre and Cinema.



**Winkworth**

for every step...





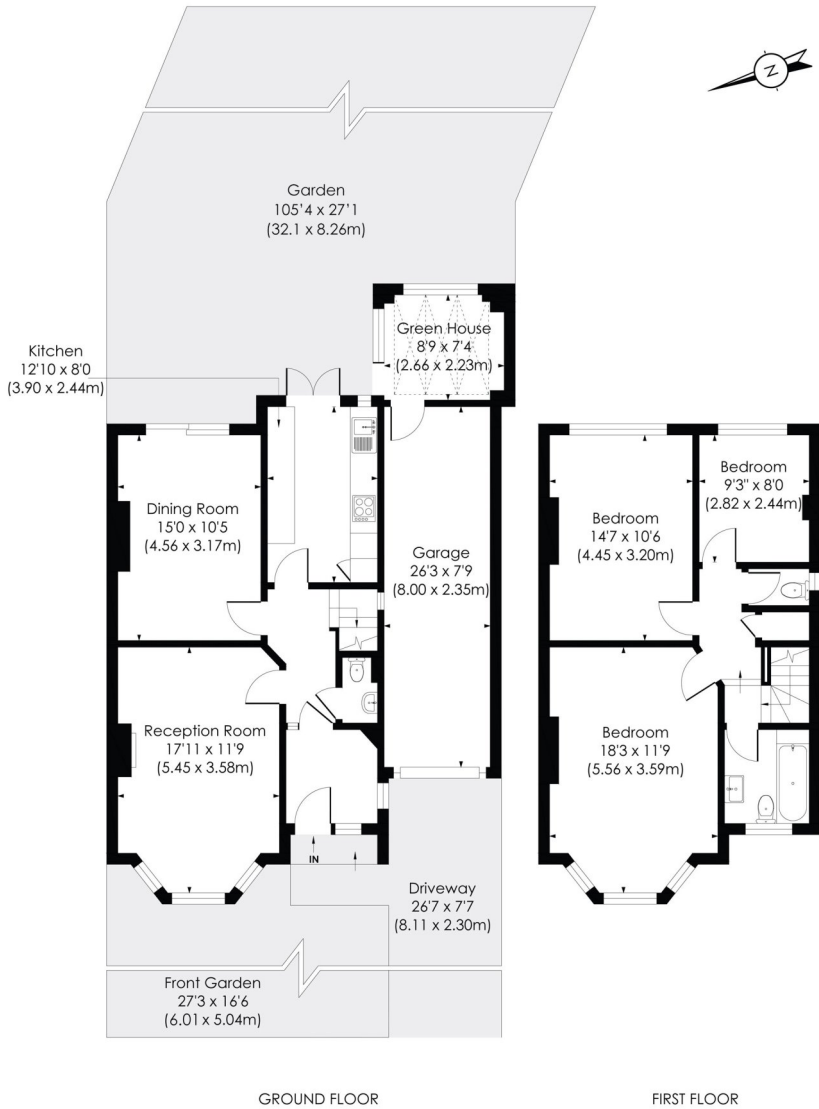
**Winkworth**

for every step...

# ROXBURGH ROAD, SE27

Approx. Gross Internal Floor Area

1367 Sq. ft/127.02 Sq. m

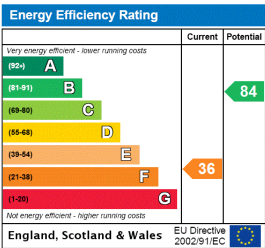


© Pixangle Property Marketing Ltd. info@pixangle.com Tel: 0208 870 2118

pixangle  
PROPERTY MARKETING

This floor plan has been prepared for the purpose of illustration only in accordance with the latest RICS code of measuring practice and is not to scale. All measurements and areas are approximate and whilst every effort has been made to ensure the accuracy of the plan contained here, no responsibility is taken for any error, omission or misstatement.

This floorplan is for illustration purposes only and is not to scale. The position and size of doors, windows, appliances and other features are approximate.



West Norwood | 02086700035 | westnorwood@winkworth.co.uk

**Winkworth**  
for every step...

winkworth.co.uk

Winkworth wishes to inform prospective buyers and tenants that these particulars are a guide and act as information only. All our details are given in good faith and believed to be correct at the time of printing but they don't form part of an offer or contract. No Winkworth employee has authority to make or give any representation or warranty in relation to this property. All fixtures and fittings, whether fitted or not are deemed removable by the vendor unless stated otherwise and room sizes are measured between internal wall surfaces, including furnishings.