



KETTERING STREET, SW16
£550,000 SHARE OF FREEHOLD

A FABULOUS SPLIT LEVEL MAISONETTE SITUATED
IN THE SOUGHT AFTER AREA OF FURZEDOWN

Tooting | 020 8767 5221 | tooting@winkworth.co.uk

Winkworth

for every step...

winkworth.co.uk



DESCRIPTION

A fabulous split level Edwardian maisonette situated in the sought after area of Furzedown. Beautifully decorated throughout this wonderful flat consists of two well-proportioned double bedrooms and a single bedroom/study room. To the front of the flat is a wonderful reception room with high ceilings, feature fireplace and sash windows. There is a large kitchen/breakfast room to the rear giving access down to private, south facing rear garden. The family bathroom is adjacent to the kitchen. On the second floor there is a large double bedroom, there is still further potential to expand further subject to usual planning constraints. Externally, the property boasts a generous size rear garden offering a superb space to entertain and enjoy. The property has been superbly maintained and offers modern living whilst keep many original features.

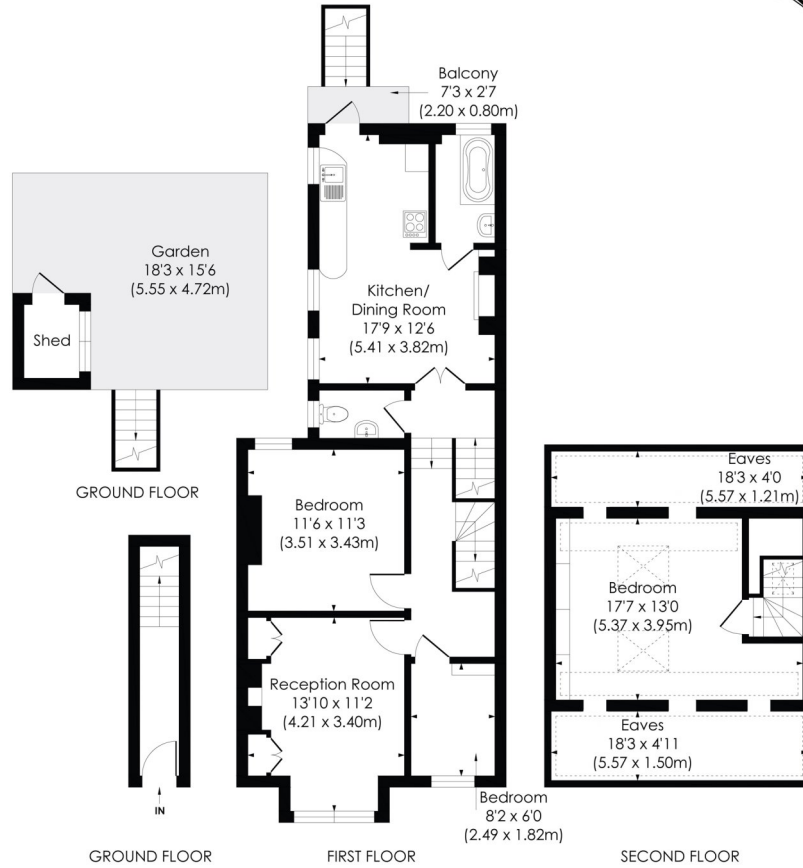
Kettering Street is situated within the highly acclaimed Furzedown location. A wide range of local amenities can be found within easy reach on Moyser Road and Tooting High Road. Transport links are found a short walk away at Tooting Bec Underground (Northern Line), Streatham Common (providing access to London Bridge, Victoria and Clapham Junction), and Streatham Overground Station (providing Thames Link services).





KETTERING STREET, SW16

Approx. Gross Internal Floor Area
1157 Sq. ft/107.48 Sq. m (Incl. Eaves)
983 Sq. ft/91.32 Sq. m (Excl. Eaves)

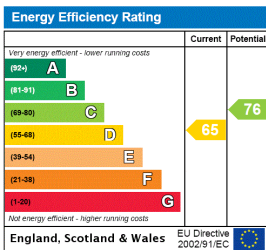


pixangle
PROPERTY MARKETING

© Pixangle Property Marketing Ltd. info@pixangle.com Tel: 0208 870 2118

This floor plan has been prepared for the purpose of illustration only in accordance with the latest RICS code of measuring practice and is not to scale. All measurements and areas are approximate and whilst every effort has been made to ensure the accuracy of the plan contained here, no responsibility is taken for any error, omission or misstatement.

This floorplan is for illustration purposes only and is not to scale. The position and size of doors, windows, appliances and other features are approximate.



Tooting | 020 8767 5221 | tooting@winkworth.co.uk

for every step...

winkworth.co.uk

Winkworth wishes to inform prospective buyers and tenants that these particulars are a guide and act as information only. All our details are given in good faith and believed to be correct at the time of printing but they don't form part of an offer or contract. No Winkworth employee has authority to make or give any representation or warranty in relation to this property. All fixtures and fittings, whether fitted or not are deemed removable by the vendor unless stated otherwise and room sizes are measured between internal wall surfaces, including furnishings.