



Riverside House, Fobney Street, Reading, RG1 6BH

£1,750 per month *Furnished*

2  1  2 

Luxury two double bedroom apartment located in Reading Town Centre next to the Oracle Shopping Centre. Internally the apartment comprises two double bedrooms, an open plan living dining room leading into the kitchen with fitted appliances, two bathrooms including an en suite to the master and a balcony off the living area. The property benefits from an intercom system and secure allocated parking. Available 16th April 2026. Furnished.

KEY FEATURES

- Two bedroom apartment
- River views
- Private balcony
- Undercroft parking
- Council tax band D
- Available 16th April
- Furnished



Reading

0118 4022 300 | reading@winkworth.co.uk

Winkworth

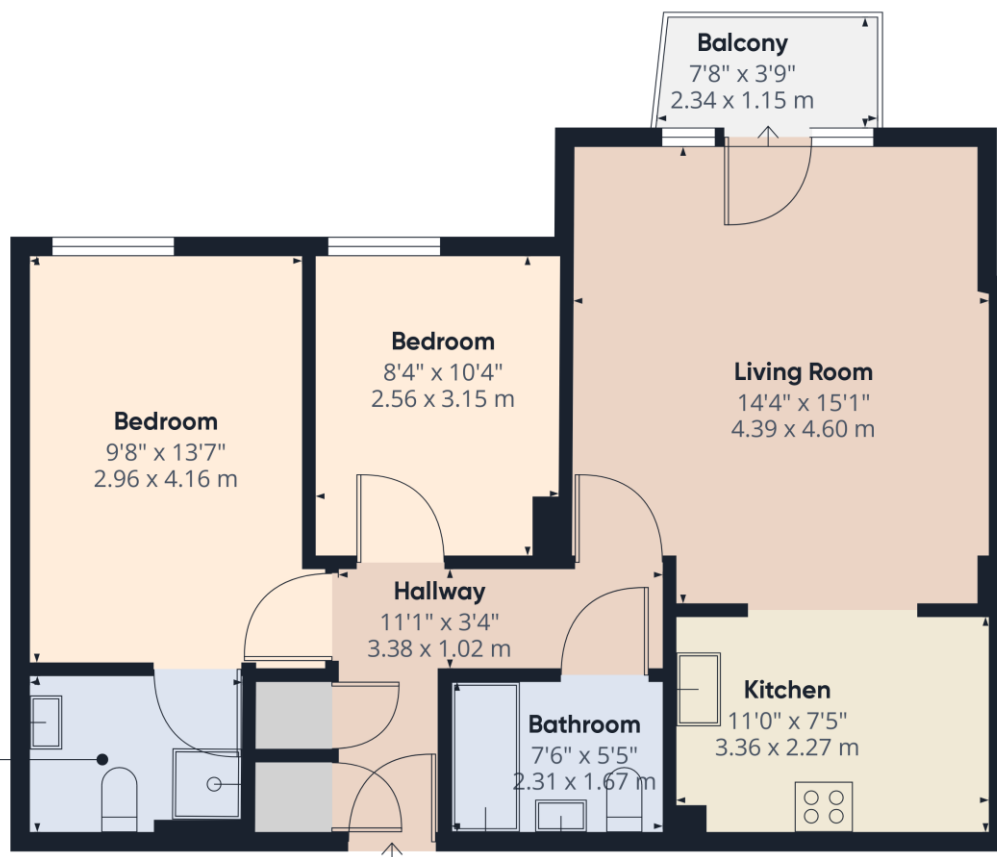
for every step...





MATERIAL INFO

Deposit: £2,019.23
Holding Deposit: £403.84
Council Tax Band: D
EPC rating: C



Approximate total area⁽¹⁾

669.84 ft²
62.23 m²

Balconies and terraces

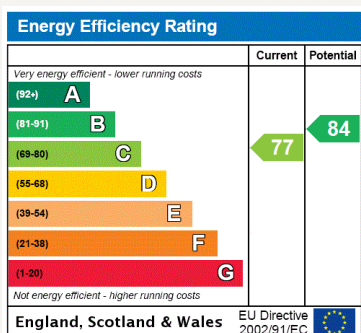
27.56 ft²
2.56 m²

(1) Excluding balconies and terraces

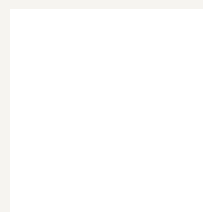
While every attempt has been made to ensure accuracy, all measurements are approximate, not to scale. This floor plan is for illustrative purposes only.

Calculations are based on RICS IPMS 3C standard.

GIRAFFE360



For more information, scan the QR code or visit the link below



<https://www.winkworth.co.uk/rent/property/REA150506>

Where no figures are shown, we have been unable to ascertain the information. All figures that are shown were correct at the time of printing.

Reading

0118 4022 300 | reading@winkworth.co.uk

Winkworth

for every step...

Winkworth wishes to inform prospective buyers and tenants that these particulars are a guide and act as information only. All our details are given in good faith and believed to be correct at the time of printing but they don't form part of an offer or contract. No Winkworth employee has authority to make or give any representation or warranty in relation to this property. All fixtures and fittings, whether fitted or not are deemed removable by the vendor unless stated otherwise and room sizes are measured between internal wall surfaces, including furnishings.