



WOODLAND GROVE, KT13
£4,200 PER MONTH UNFURNISHED

AT A GLANCE

- 4 bedrooms
- 2 bathrooms
- Family kitchen
South west facing garden
- Driveway, Double garage

DESCRIPTION:

Situated in a desirable location, this detached house offers a perfect blend of modern elegance and traditional charm. Boasting four spacious bedrooms, this unfurnished property is ideal for families looking for a new place to call home. The property features a South west facing garden, perfect for outdoor entertaining or simply relaxing in the sun. Step inside to discover a bright and airy conservatory, providing an additional space for relaxation or dining. The property benefits from ample natural light throughout, creating a warm and inviting atmosphere. With convenient access to local amenities, schools, and transport links, this property offers both comfort and convenience for its residents. Don't miss the opportunity to make this house your

rc

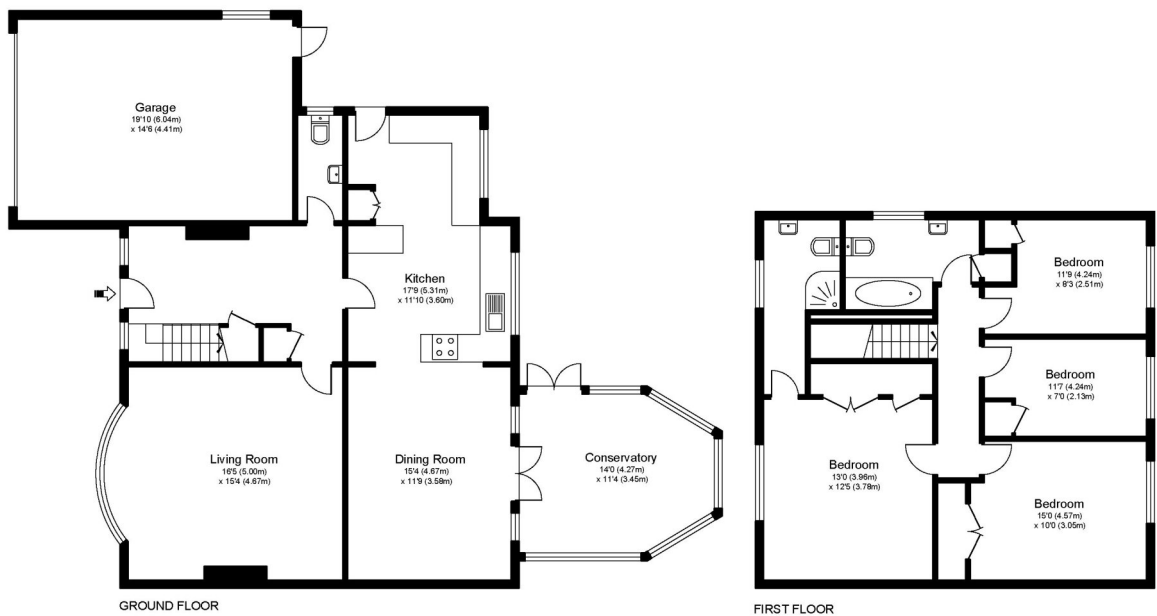
Weybridge | 01932 854400 | weybridge@winkworth.co.uk

Winkworth

Commercial

winkworth.co.uk

WOODLAND GROVE, WEYBRIDGE, KT13



Approximate Gross Internal Floor Area: 163 m sq / 1757 sq ft
Garage Area: 27 m sq / 287 sq ft
Total Area : 190 m sq / 2044 sq ft

Whilst every attempt has been made to ensure the accuracy of the floor plan contained here, measurements of doors, windows and rooms are approximate and no responsibility is taken for any error, omission or misstatements. These plans are not to scale and are for representation purposes only as defined by RICS Code of Measuring Practice and should be used as such by any prospective purchaser. Specifically no guarantee is given on total square footage of the property if quoted on this plan. Any figure given is for initial guidance only and should not be relied on as a basis of valuation.

This floorplan is for illustration purposes only and is not to scale. The position and size of doors, windows, appliances and other features are approximate.

Score	Energy rating	Current	Potential
92+	A		
81-91	B		
69-80	C		
55-68	D		
39-54	E		
21-38	F		
1-20	G		

