



CLAREWOOD COURT, CRAWFORD STREET, LONDON, W1H
£995,000 LEASEHOLD 87 YEARS 1 MONTH

**A WELL PROPORTIONED TWO BEDROOM APARTMENT
 LOCATED ON THE FIRST FLOOR OF THIS POPULAR
 RESIDENTIAL BUILDING WITH A LIFT AND PORTER.**

Paddington and Bayswater | 020 7467 5770 | paddington@winkworth.co.uk

Winkworth

for every step...

winkworth.co.uk



DESCRIPTION:

Located on the west side of Marylebone, this highly sought-after block is well placed for the amenities, including Marylebone High Street, Oxford Street, Mayfair, Hyde Park and Kensington Gardens. Transport links include the London Underground Network from Marble Arch (Central Line), Baker Street and Edgware Road. For National Rail services include Marylebone and Paddington (including the Heathrow Express) and the forthcoming Crossrail.

SERVICE CHARGE - ABOUT £7,200 PER ANNUM | GROUND RENT - ABOUT £180 PER ANNUM



Winkworth

for every step...

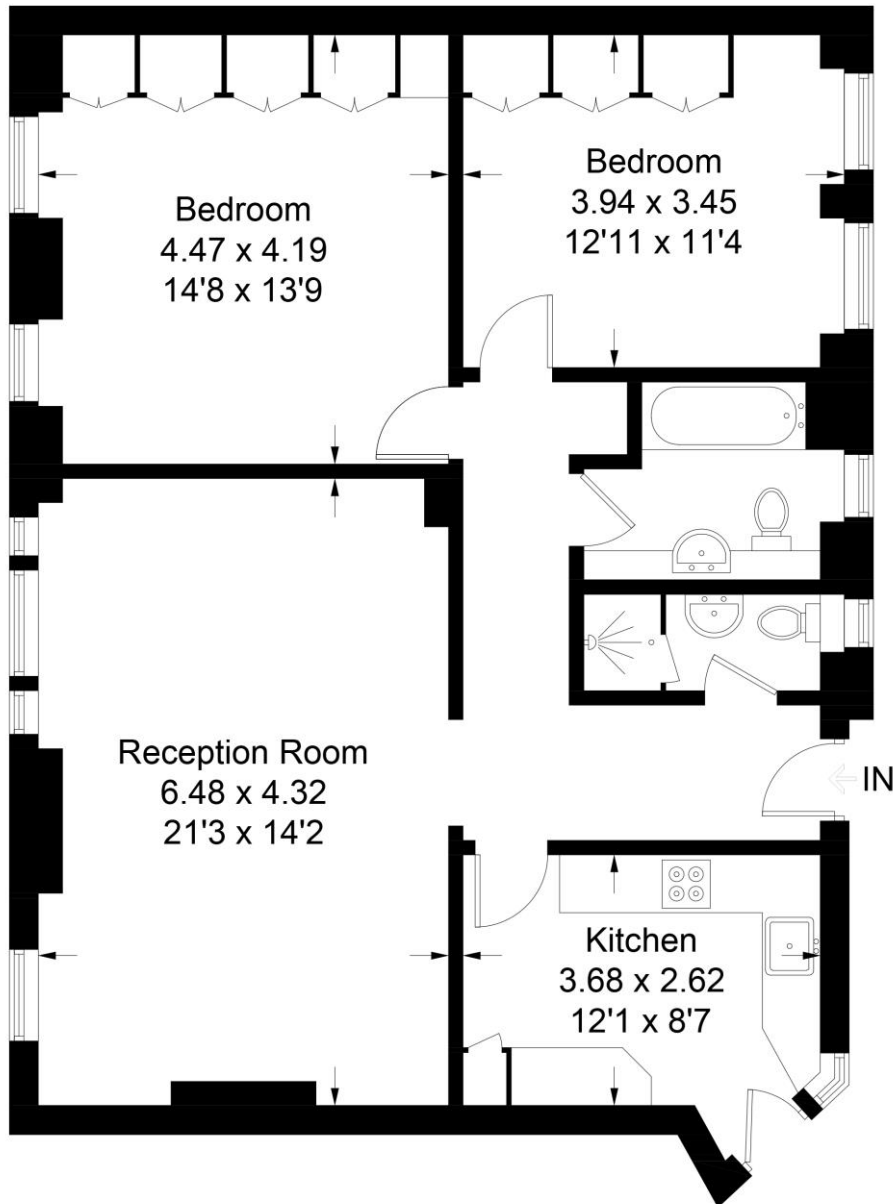


Winkworth

for every step...

Clarewood Court, Crawford Street, W1H

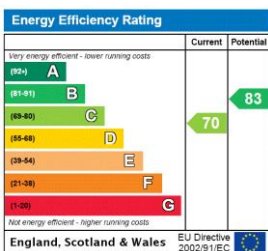
Approximate Gross Internal Area
92.1 sq m / 991 sq ft



First Floor

This plan is for layout guidance only. Not drawn to scale unless stated. Windows and door openings are approximate. Whilst every care is taken in the preparation of this plan, please check all dimensions, shapes and compass bearings before making any decisions reliant upon them. (ID441678)

This floorplan is for illustration purposes only and is not to scale. The position and size of doors, windows, appliances and other features are approximate.



Winkworth

Paddington and Bayswater | 020 7467 5770 | paddington@winkworth.co.uk

for every step...

winkworth.co.uk

Winkworth wishes to inform prospective buyers and tenants that these particulars are a guide and act as information only. All our details are given in good faith and believed to be correct at the time of printing but they don't form part of an offer or contract. No Winkworth employee has authority to make or give any representation or warranty in relation to this property. All fixtures and fittings, whether fitted or not are deemed removable by the vendor unless stated otherwise and room sizes are measured between internal wall surfaces, including furnishings.