



VERONICA ROAD, SW17
£635,000 SHARE OF FREEHOLD

A STUNNING TWO DOUBLE BEDROOM FLAT SITUATED ON THE FIRST FLOOR OF THIS HANDSOME DOUBLE FRONTED EDWARDIAN HOUSE ON THE HIGHLY SOUGHT AFTER HEAVER ESTATE.

Tooting | 020 8767 5221 | tooting@winkworth.co.uk

Winkworth

for every step...

winkworth.co.uk



DESCRIPTION

A stunning two double bedroom flat situated on the first floor of this handsome double fronted Edwardian house on the highly sought after Heaver Estate. This elegant flat has an abundance of natural light in the reception room with large sash windows and original feature fireplace, with beautiful built in bookshelves either side. Off the sitting room is a charming kitchen with integrated appliances. To the rear of the flat are two good size double bedrooms, the principal bedroom has ample built in wardrobes and a Juliet balcony. Off the landing is a gorgeous walk in shower room which is fully tiled throughout.

Veronica Road is a highly sought-after residential road which is ideally placed for the many local shops and restaurants Balham has to offer. The Underground station and Mainline stations in Balham are close by, as are the wide-open spaces of Tooting Bec Common and the area is also well served by many excellent schools and nurseries.

Council tax band: C

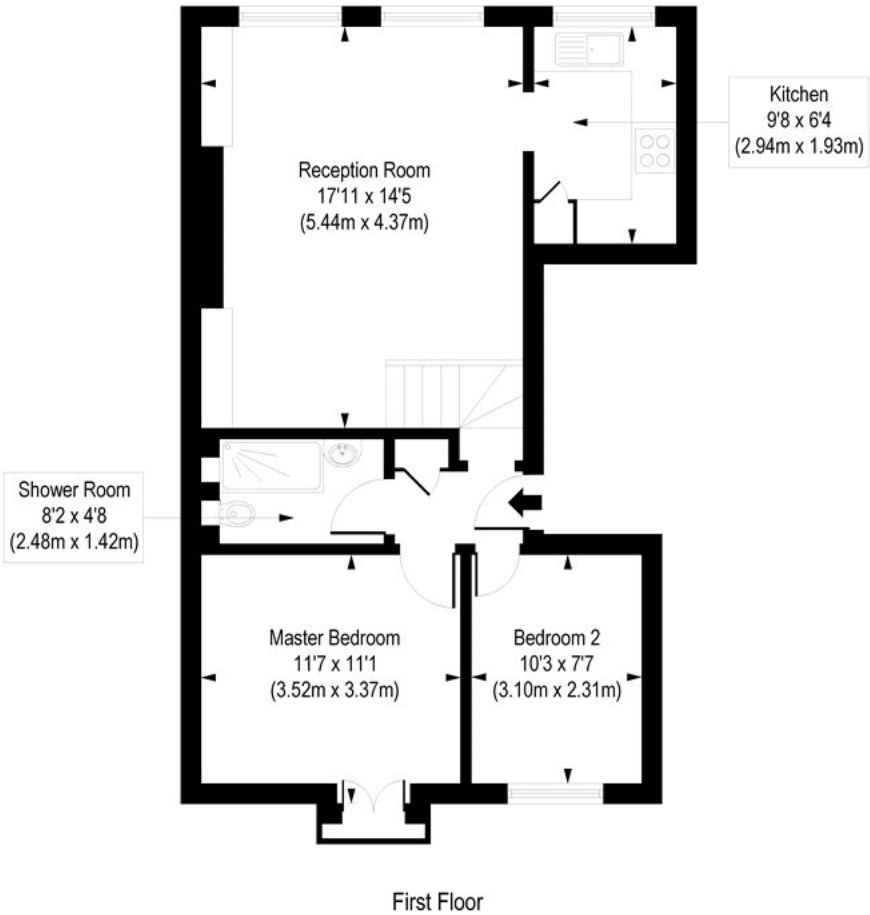
Tenure: Share of freehold

Service charge: £100 per month to include building insurance.



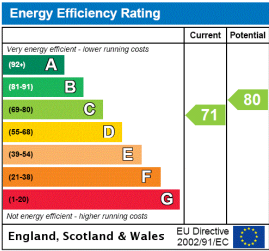


Veronica Road, SW17
Approx. Gross Internal Floor Area 605 sq. ft / 56.21 sq. m



COMPLIANT WITH RICS CODE OF MEASURING PRACTICE. Floorplan is for illustrative purposes only and is not to scale. Every attempt has been made to ensure the accuracy of the floorplan shown, however all measurements, fixtures, fittings and data shown are an approximate interpretation for illustrative purposes only. Liability for errors, omissions or mis-statement through negligence or otherwise is hereby excluded.

This floorplan is for illustration purposes only and is not to scale. The position and size of doors, windows, appliances and other features are approximate.



Winkworth

Tooting | 020 8767 5221 | tooting@winkworth.co.uk

for every step...

winkworth.co.uk

Winkworth wishes to inform prospective buyers and tenants that these particulars are a guide and act as information only. All our details are given in good faith and believed to be correct at the time of printing but they don't form part of an offer or contract. No Winkworth employee has authority to make or give any representation or warranty in relation to this property. All fixtures and fittings, whether fitted or not are deemed removable by the vendor unless stated otherwise and room sizes are measured between internal wall surfaces, including furnishings.