



## Warwick Way, SW1V

£2,100 PER MONTH

**PART FURNISHED**

### AT A GLANCE

- Double Bedroom
- Reception Room
- Fitted Kitchen
- Patio Garden
- Own Front Door
- Part furnished

**Winkworth**

for every step...





## WARWICK WAY, SW1V

£2,100 PER MONTH

PART FURNISHED

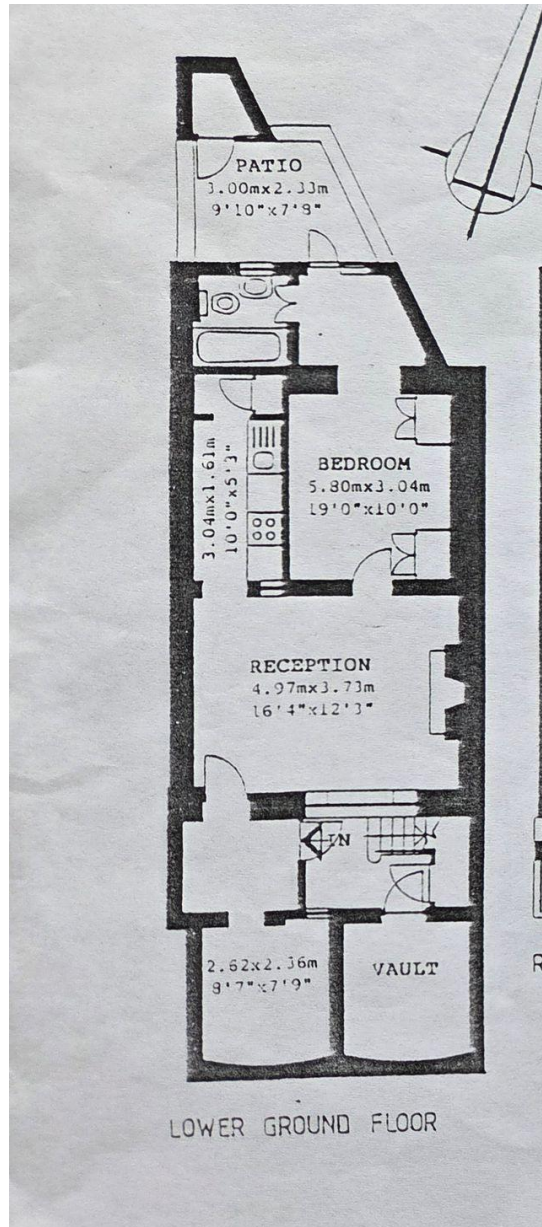
A well presented one double bedroom garden flat conveniently located moments from Victoria with its wealth of amenities and transport links. The property comprises of a large reception with room to dine, fitted kitchen, double bedroom, dressing area and family bathroom. Further benefits include own private entrance, patio garden and useful vault storage. The property is available to let on a part-furnished basis.

Warwick Way is only a short stroll from Victoria Station and approximately only a five-minute walk to the sought after Elizabeth Street, Belgravia where there is an array of Restaurants, Cafe's, Boutique shops and beauty salons to choose from.



winkworth wishes to inform prospective buyers and tenants that these particulars are a guide and act as information only. All our details are given in good faith and believed to be correct at the time of printing but they don't form part of an offer or contract. No winkworth employee has authority to make or give any representation or warranty in relation to this property. All fixtures and fittings, whether fitted or not are deemed removable by the vendor unless stated otherwise and room sizes are measured between internal wall surfaces - including fireplaces.

Score	Energy rating	Current	Potential
92+	A		
81-91	B		
69-80	C		77 C
55-68	D	66 D	
39-54	E		
21-38	F		
1-20	G		



Pimlico & Westminster | 020 7828 1786 |  
pimlico@winkworth.co.uk

winkworth.co.uk/pimlico

**Winkworth**

for every step...