



PRESTBURY CRESCENT, BANSTEAD, SURREY, SM7

£475,000

FREEHOLD

Winkworth





PRESTBURY CRESCENT

BANSTEAD, SURREY, SM7

A WELL PRESENTED THREE BEDROOM SEMI DETACHED HOUSE LOCATED IN A QUIET TREE-LINED ROAD.

Prestbury Crescent is a desirable location, in a slightly elevated position enjoying fabulous views to the rear across Chipstead Valley. There is a choice of local schooling in this vicinity including the well-regarded Chipstead Valley Primary school. Both Chipstead and Woodmansterne Stations are just a mile away with reliable rail services to London. Further amenities can be found at nearby Banstead Village and Coulsdon Town Centre, with bus services available to Epsom, Purley and Croydon.



PRESTBURY CRESCENT BANSTEAD, SURREY, SM7

This bright and spacious house is well presented throughout and the ground floor briefly comprises; an entrance hallway, a double aspect through lounge/dining room with an attractive bay window, and feature fireplace, with sliding patio doors opening onto the raised decking, a modern fitted kitchen with a range of eye and low level units as well as ample worktop space. A single door leads out into the garden.

Upstairs provides three bedrooms in total, including the principal bedroom with a bay window, a second double bedroom, a family bathroom, and a further single bedroom.

The rear garden has a raised decking area adjacent to the house affording a wonderful view across Chipstead Valley, with the remainder mainly laid to lawn with a selection of shrub borders. A shared driveway provides access to the garage.

All in all a superb house in a very convenient location, close to well regarded schools, both private and state run for all age groups. The area is surrounded by some of Surrey's finest open green belt countryside, with local



BANSTEAD OFFICE

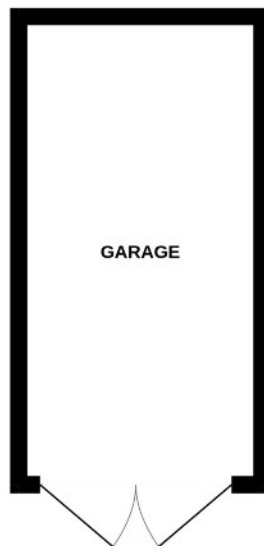
01737 362 362 | banstead@winkworth.co.uk

AT A GLANCE...

- Entrance Hall
- Living/Dining Room - 22'4" (max) x 11'1" (6.81m x 3.38m)
- Kitchen - 10'2" x 8'8" (3.11m x 2.65m)
- Bedroom 1 - 11'10" x 11'0" (3.61m x 3.35m)
- Bedroom 2 - 11'2" x 10'0" (3.40m x 3.05m)
- Bedroom 3 - 7'1" x 6'0" (2.16m x 1.83m)
- Family Bathroom - 8'2" x 6'0" (2.49m x 1.83m)
- Garage
- Rear Garden - 65' (19.81m) approximately







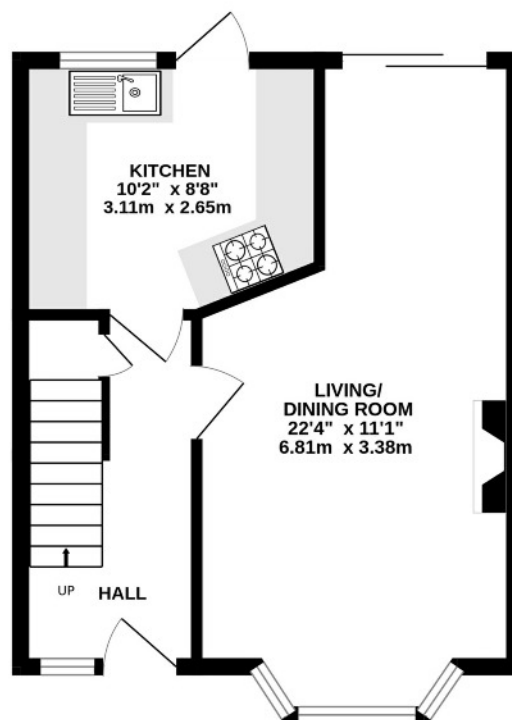
GARAGE

Prestbury Crescent, Banstead

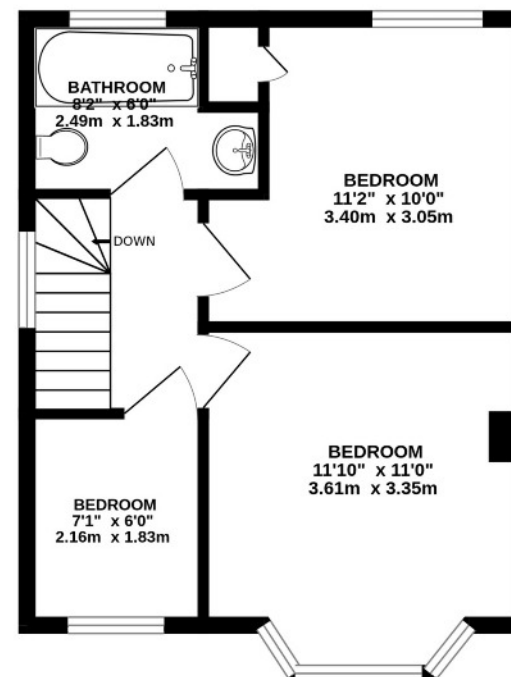
INTERNAL FLOOR AREA (APPROX.) 732 sq ft/ 68 sq m

Excluding Garage

Garden extends to 65' (19.81m) approx.



GROUND FLOOR



FIRST FLOOR

Winkworth

Whilst every attempt has been made to ensure the accuracy of this floor plan, measurement of doors, windows, rooms and any other items are approximate and no responsibility is taken for any error, omission or mis-statement. Made with Metropix © 2025.

| Score | Energy rating | Current | Potential |
|-------|---------------|---------|-----------|
| 92+ | A | | |
| 81-91 | B | | |
| 69-80 | C | | 80 C |
| 55-68 | D | | |
| 39-54 | E | 50 E | |
| 21-38 | F | | |
| 1-20 | G | | |



Under the Consumer Protection Regulations 2008, these Particulars are a guide and act as information only. All details are given in good faith and are believed to be correct at time of printing. Winkworth give no representation as to their accuracy and potential purchasers or tenants must satisfy themselves by inspection or otherwise as to their correctness. No employee of Winkworth has authority to make or give any representation or warranty in relation to this property.

Banstead office

100 High Street, Banstead, SM7 2NN
01737 362 362 | banstead@winkworth.co.uk

winkworth.co.uk/banstead

Winkworth

See things differently.